

IN THE CITY OF RIVERSIDE

RECORD OF SURVEY

OF A PORTION OF LOT 244 OF THE LANDS OF THE S. C. C. A., M. B. 7, PG. 3, RECORDS OF SAN BERNARDINO COUNTY, CALIFORNIA. LOCATED IN JURUPA RANCHO.

JULY 1962

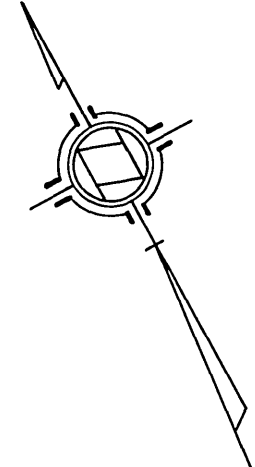
J. F. DAVIDSON, C. E.

SCALE 1" = 50'

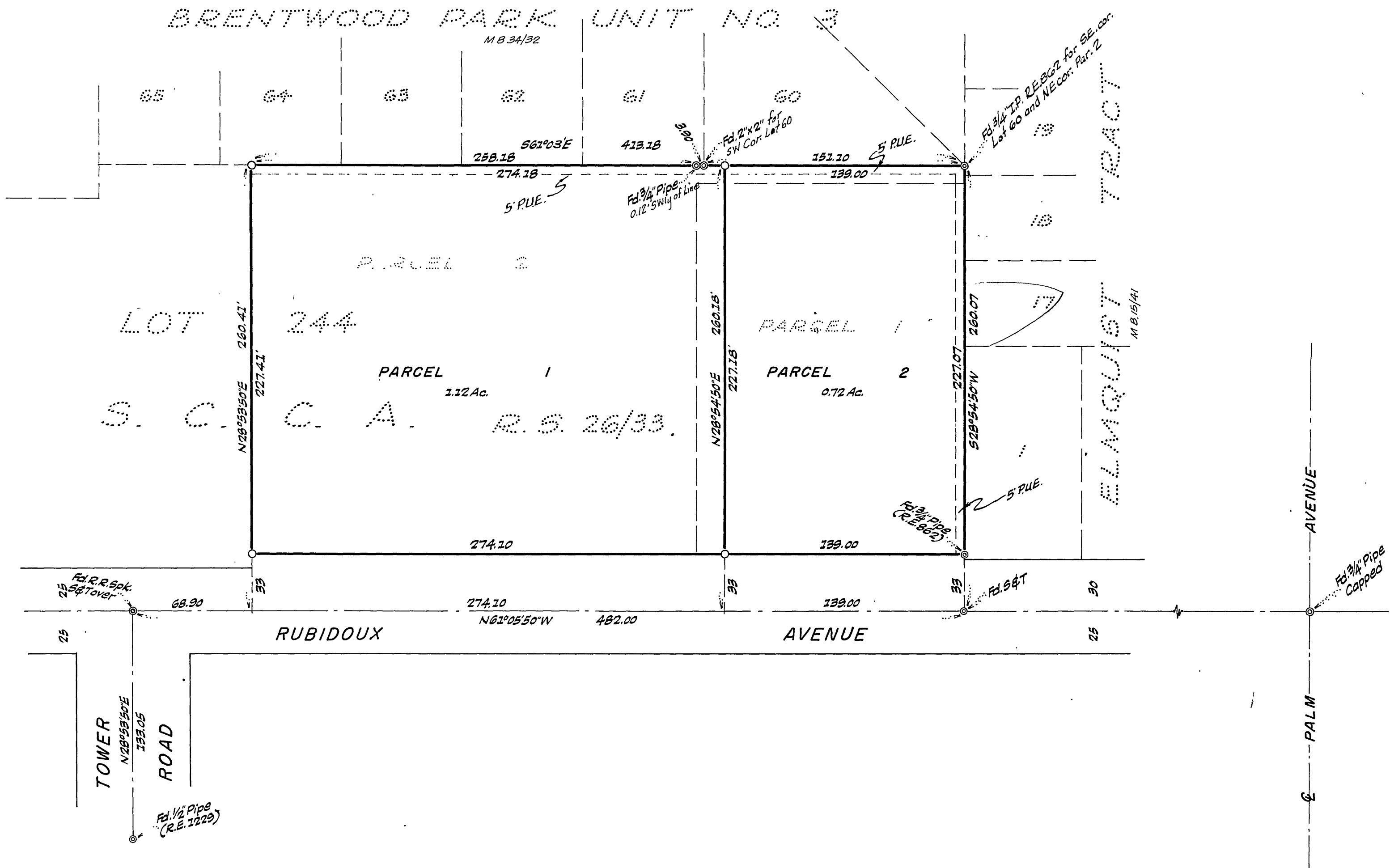
Filed for record at the request of County Surveyor this 26 day of Nov, 1962 at 3:30 P.M. in Book 38 of Record of Survey at Page 37.

Fee \$ 5.00 No. 105711 JACK A. ROSS County Recorder

By Leann B. Naughton Deputy



SURVEYED AT REQUEST OF ELIZABETH LAVALLEE



ENGINEER'S CERTIFICATE

This map correctly represents a survey made by me or under my direction in conformance with the requirements of Chapter 15 of Division 3 of the Business and Professions Code at the request of ELIZABETH LAVALLEE in July, 1962.

J. F. Davidson
Registered Civil Engineer No. 862.

ENGINEER'S NOTE

Bearings are based on the center line of Rubidoux Avenue, being N 61° 05' 50" W as shown on R. S. 26/33, Records of Riverside County, Calif.

○ Indicates 3/4" Pipe tagged R. E. 862 set.

COUNTY SURVEYOR'S CERTIFICATE

This map has been examined for conformance with the requirements of Chapter 15 of Division 3 of the Business and Professions Code this 16th day of November, 1962.

A. C. KEITH County Surveyor

By G. T. Worsley Deputy