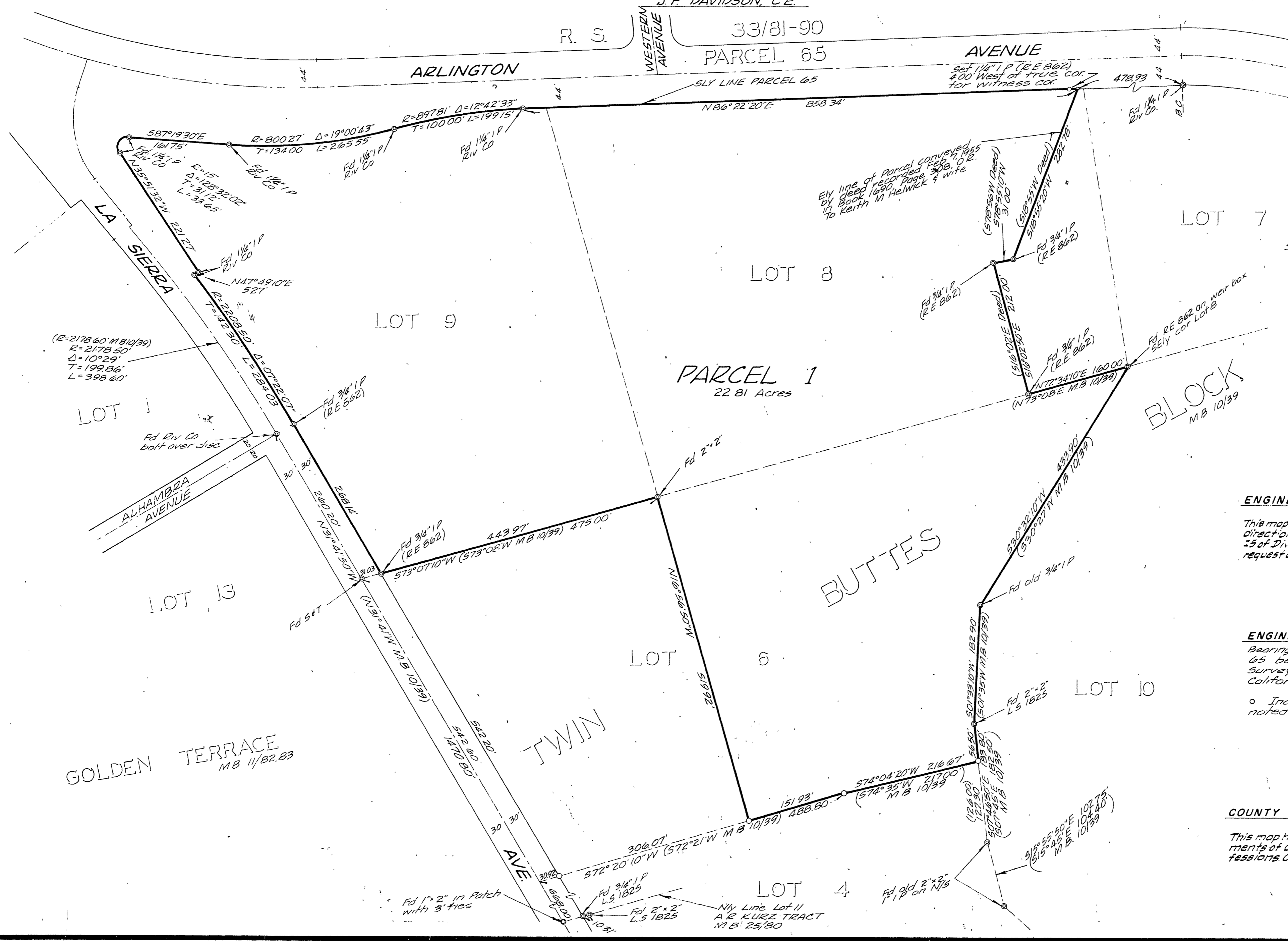


RECORD OF SURVEY

IN THE COUNTY OF RIVERSIDE
OF A PORTION OF LOTS 6, 8, AND 9 OF TWIN BUTTES BLOCK
M.B. 10-39, RECORDS OF RIVERSIDE COUNTY, CALIFORNIA
OCTOBER 1962 IN RANCHO LA SIERRA SEPULVEDA SCALE 1"=100'
J.F. DAVIDSON, C.E.

Filed for record at the request of County Surveyor
this 11 day of December 1962
at 10:19 AM in Book of Record of Survey at Page
43
Fee \$ 5.00 No. _____
JACK A ROSS County Recorder
By William W. Paly Deputy



Survey made at the request of
Alvord Unified School District

ENGINEER'S CERTIFICATE
This map correctly represents a survey made by me or under my direction in conformance with the requirements of Chapter 15 of Division 3 of the Business and Professions Code as requested by Alvord Unified School District in October 1962.
J. F. Davidson
Registered Civil Engineer No. 862

ENGINEER'S NOTE
Bearings are based on the southerly line of Parcel 65 being N86°22'20"E as shown on Record of Survey 33/81-90, Records of Riverside County, California.
o Indicates 3/4" Pipe tagged RE 862 set, unless noted otherwise

COUNTY SURVEYOR'S CERTIFICATE
This map has been examined for conformance with the requirements of Chapter 15 of Division 3 of the Business and Professions Code this 4th day of December 1962.
A.C. KEITH County Surveyor

By *C. T. Worsley* Deputy
F.B. 759-748; F.B. 681-3476.56