

IN THE CITY OF RIVERSIDE

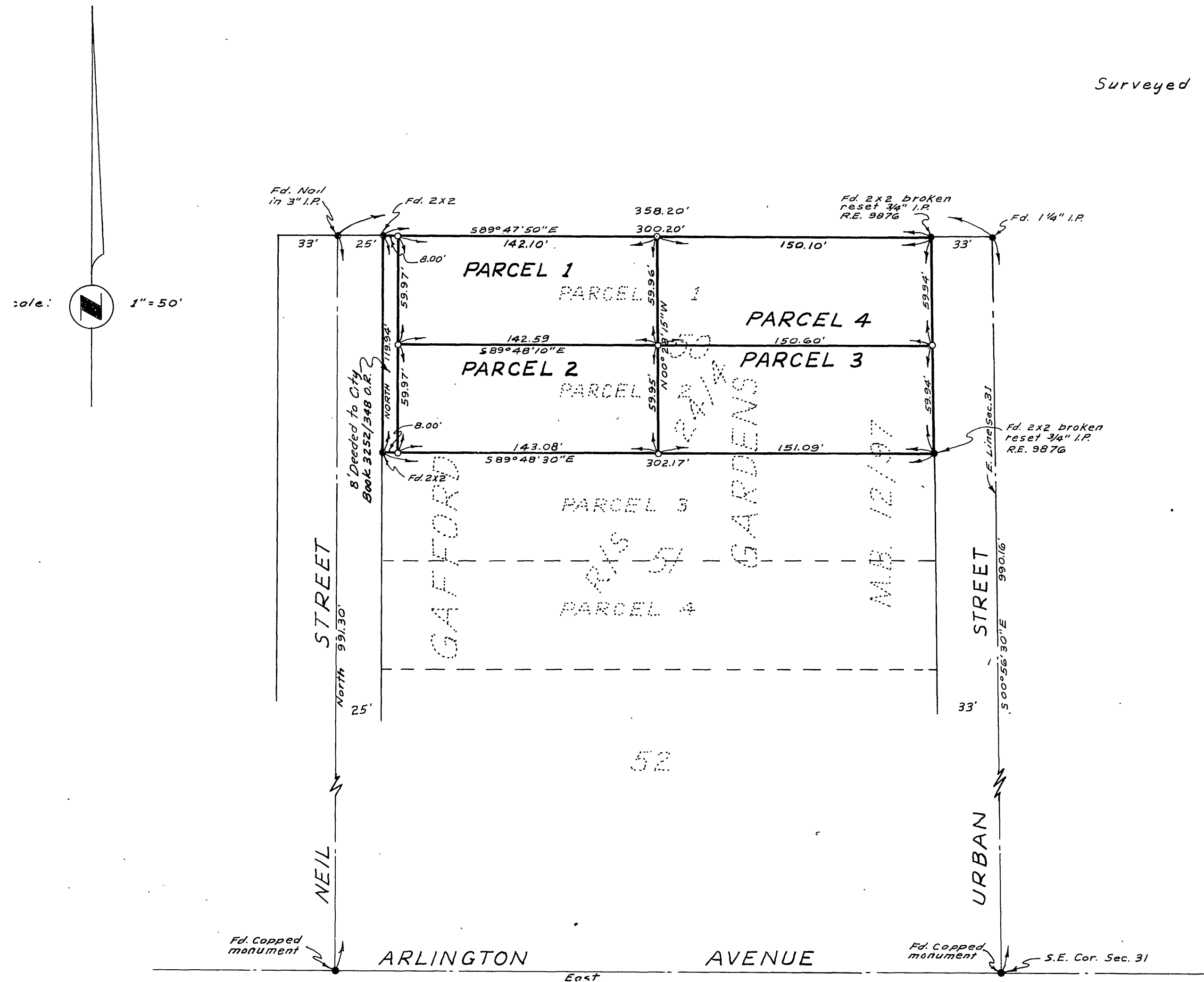
# RECORD OF SURVEY

OF LOT 50, GAFFORD GARDENS AS  
 RECORDED IN MAP BOOK 12, PAGE 97, RECORDS OF  
 RIVERSIDE COUNTY, CALIFORNIA.  
 IN SECTION 31 T2S R5W S.B.B.&M.

Filed for Record at request of County Surveyor this 11 day of  
 December, 1962 at 10:46 A.M. in Book 38  
 of Record of Survey at Page 46  
 Fee \$ 5.00 No. \_\_\_\_\_  
 JACK A. ROSS County Recorder  
 By William D. DeLoach Deputy

"By"  
 ALBERT A. WEBB ASSOCIATES  
 CIVIL ENGINEERS  
 RIVERSIDE, CALIFORNIA  
 October 1962

Surveyed at the request of: Boyd E. Low



**ENGINEER'S CERTIFICATE**

This map correctly represents a survey made by me or under my direction in conformance with the requirements of Chapter 15 of Division 3 of the Business and Profession Code of the request of BOYD E. LOW during October 1962.

Albert A. Webb  
 Registered Civil Engineer No 9876

**ENGINEER'S NOTE:**

Basis of Bearings is the Center line of "NEIL STREET" being "North" as shown on map of "GAFFORD GARDENS" Recorded in Map Book 12, Page 97, Records of Riverside County, California.

Found monuments as noted at all points shown thus ●.  
 Set 3/4" Iron pipe tagged RE 9876 at all points shown thus ○.

Parcels 3 & 4 are shown in order to conform to City of Riverside requirements.

**COUNTY SURVEYOR'S CERTIFICATE**

This map has been examined for conformance with the requirements of Chapter 15 of Division 3 of the Business and Profession Code this 11th day of December 1962

A.G. KEITH County Surveyor  
 By G. T. Worsley Deputy

RS 38/46

RS 38/46