

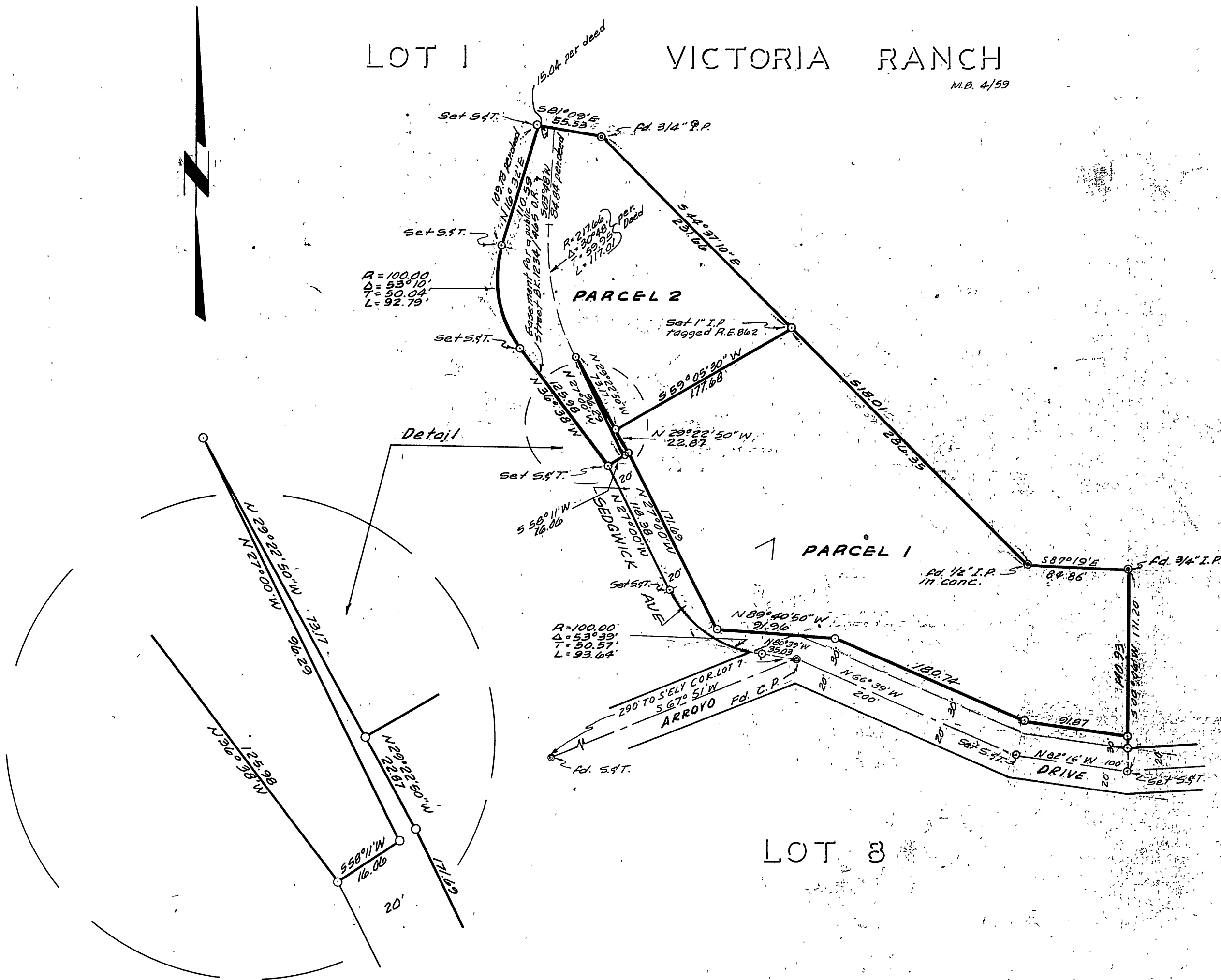
IN THE CITY OF RIVERSIDE

RECORD OF SURVEY

A PORTION OF LOT 1, OF VICTORIA RANCH M.B. 4/59
RECORDS OF RIVERSIDE COUNTY, CALIFORNIA
OCTOBER 1962 IN T.2S., R.5W., S.B. & M. SCALE 1"=80'
J.F. DAVIDSON, C.E.

Filed for Record at request of County Surveyor this 19 day of
DEC 1962 at 4:11 P.M. in Book 38
of Record of Survey of Page 57
Fee \$ 5.00 No. 117201
JACK A. ROSS County Recorder
By Caron B. Vaughn Deputy

LOT 1 VICTORIA RANCH M.B. 4/59



Made at the request of Colonel Milo Clark

ENGINEER'S CERTIFICATE
This map correctly represents a survey made by me or under my direction in conformance with the requirements of Chapter 15 of Division 3 of the Business and Professions Code at the request of Col. Milo Clark in April, 1962.
J. F. Davidson
Registered Civil Engineer No. 862

ENGINEER'S NOTE
Bearings are based on the centerline of ARROYO DRIVE being N 66° 39' W, as shown on the map of VICTORIA RANCH M.B. 4/59 Records of Riverside County, Calif.
O indicates 1" Iron Pipe, tagged R.E. 862, set, unless otherwise noted.

COUNTY SURVEYOR'S CERTIFICATE
This map has been examined for conformance with the requirements of Chapter 15 of Division 3 of the Business and Professions Code this 17th day of December, 1962.
A.C. KEITH County Surveyor
By G. T. Worsley Deputy
F.B. 775 / 2510

RS 38/51 3-1-63

RS 38/51