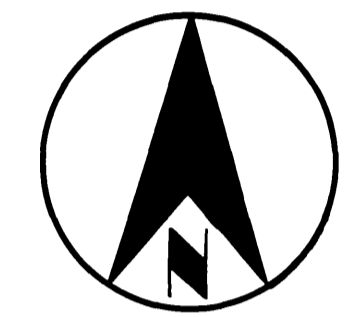
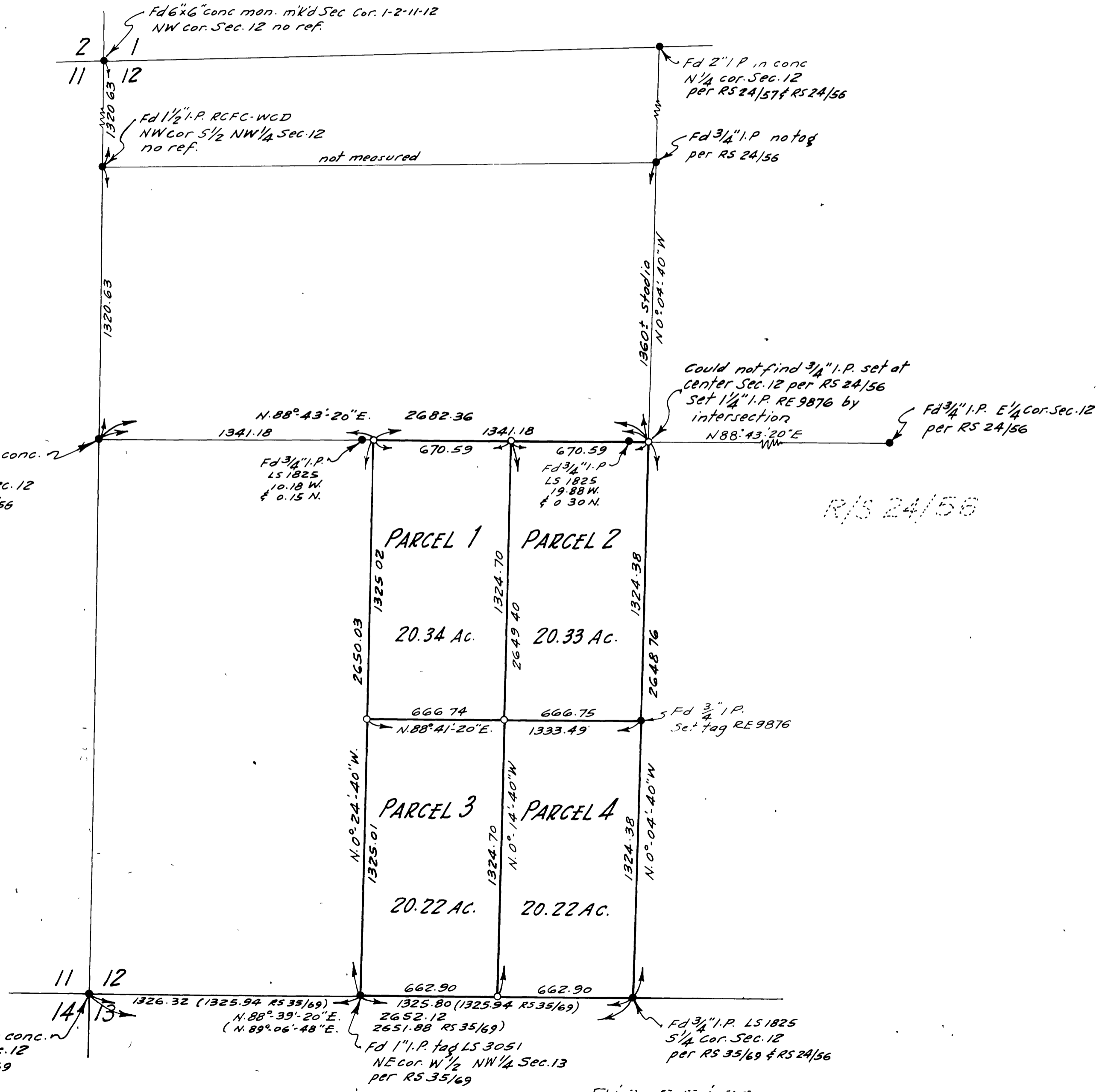


IN THE CITY OF RIVERSIDE  
**RECORD OF SURVEY**  
OF A PORTION OF SECTION 12, T.3S., R.5W., S.B.B. & M.

Filed for Record at request of County Surveyor this 19 day of  
DEC, 1962 at 4:10 P.M. in Book 38  
of Record of Survey at Page 52  
Fee \$ 5.00 No. \_\_\_\_\_  
JACK A. ROSS County Recorder  
By Caron B. Vaughan Deputy

R/S 38/52



SCALE - 1"=400'

BY  
ALBERT A. WEBB ASSOCIATES  
CIVIL ENGINEERS  
OCTOBER 1962

ENGINEER'S CERTIFICATE

This map correctly represents a survey made by me or under my direction in conformance with the requirements of Chapter 15 of Division 3 of the Business and Profession Code at the request of HUGH MURRAY in September 1962

Albert A. Webb  
Registered Civil Engineer No 3876

ENGINEER'S NOTE:

1. Basis of Bearings is the North-South quarter section line of Sec. 12, taken as N. 0° 04' 40" W, as same is shown on RS 24/56 Riv. Co. records
2. Found monuments as noted at all points shown thus •
3. Set 1 1/4" Iron Pipe tagged RE 9876 at all points shown thus ○

COUNTY SURVEYOR'S CERTIFICATE

This map has been examined for conformance with the requirements of Chapter 15 of Division 3 of the Business and Profession Code this 17th day of December 1962

A.G. KEITH County Surveyor  
By E. T. Wansley Deputy

R/S 35/69

R.S. 38/52