

# IN THE CITY OF RIVERSIDE RECORD OF SURVEY

OF A PORTION OF LOT 13, BLOCK 17 OF THE LANDS  
OF THE R. L. & I. CO. AS SHOWN IN BOOK 1, PAGE 70,  
RECORDS OF SAN BERNARDINO COUNTY, CALIFORNIA  
IN T. 35., R. 5W., S. B. B & M.

JULY 1962

J. F. DAVIDSON, C.E.

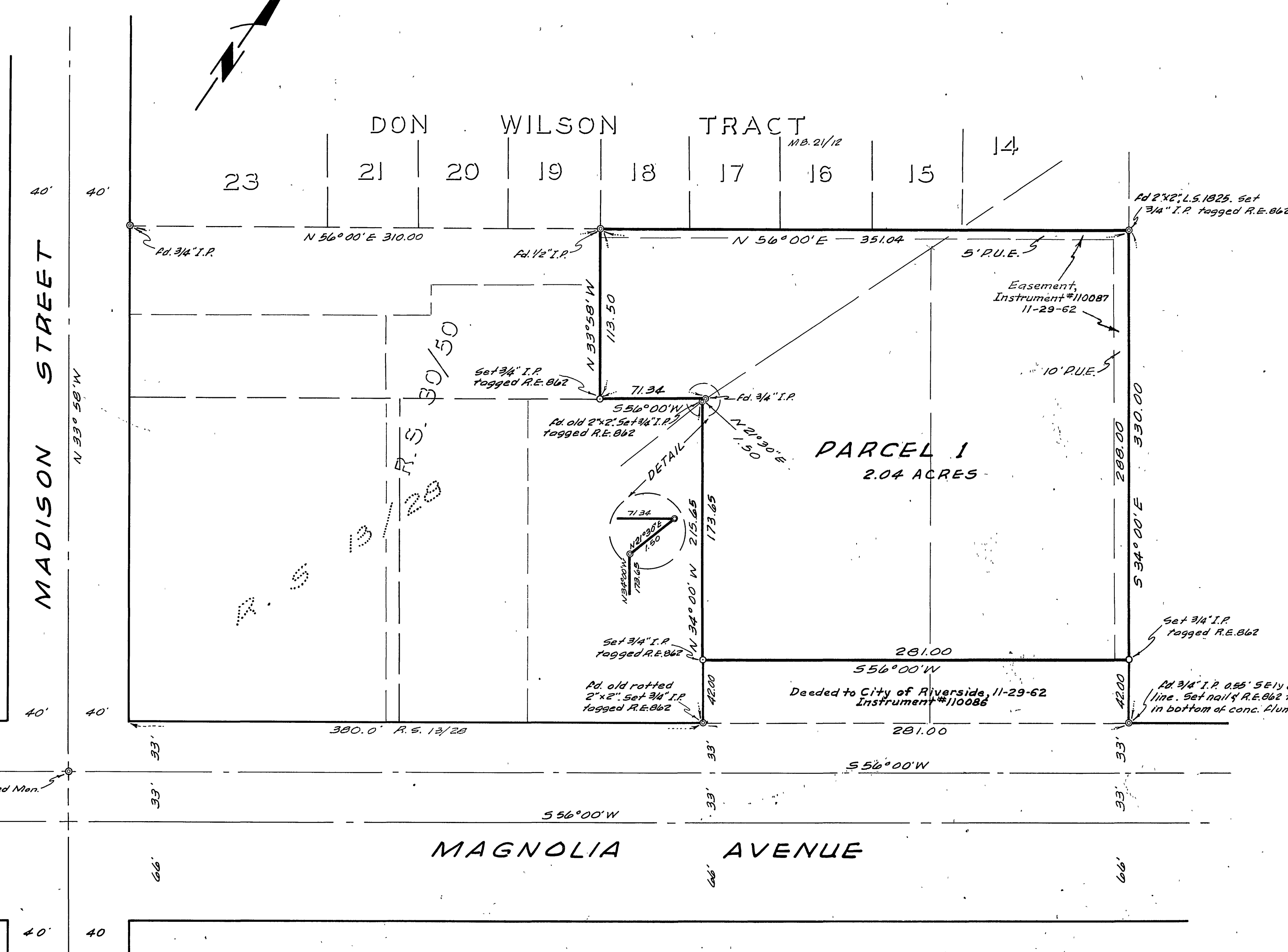
SCALE 1"=50'

Filed for record at the request of County Surveyor  
this 19 day of DEC, 1962  
at 10 A.M. in Book 38 of Record of Survey at Page  
54

Fee \$ 5.00 No. 1170-1

JACK A. ROSS County Recorder

By Baron B. Vanglen Deputy



Made at the request of Sidney L. Gray

### ENGINEER'S CERTIFICATE

This map correctly represents a survey made by me or under my direction in conformance with the requirements of Chapter 15 of Division 3 of the Business and Professions Code at the request of Sidney L. Gray in JULY, 1962.

J. F. Davidson  
Registered Civil Engineer No. 862

### ENGINEER'S NOTE

Bearings are based on the Centerline of MAGNOLIA AVENUE, being S 56° 00' W, as shown on the map of Record of Survey 13/28, Records of Riverside County, California.

### COUNTY SURVEYOR'S CERTIFICATE

This map has been examined for conformance with the requirements of Chapter 15 of Division 3 of the Business and Professions Code this 17th day of December, 1962.

A. C. KEITH County Surveyor

By R. T. Worley Deputy