

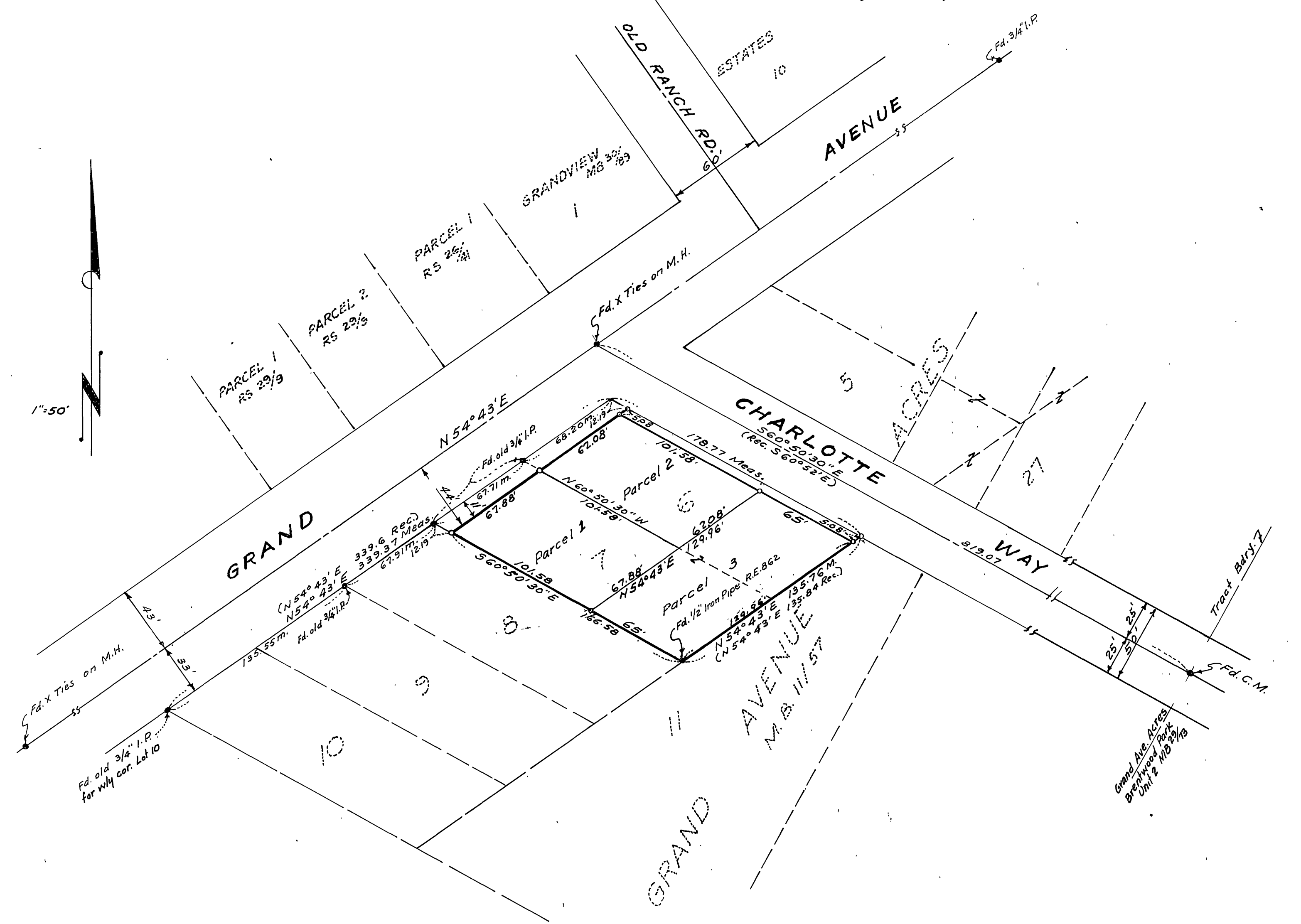
# IN THE CITY OF RIVERSIDE RECORD OF SURVEY

OF LOTS 6 AND 7 OF GRAND AVENUE ACRES AS SHOWN BY MAP ON FILE IN BOOK 11 OF MAPS, PAGE 57, RECORDS OF RIVERSIDE COUNTY, CALIFORNIA.  
AUGUST 1962 Scale 1 in. = 50 Ft.  
McKEE & CRAWLEY Surveyors & Engineers.

Filed for the record at the request of County Surveyor this 10 day of JAN, 1963 at 2:25 P.M. in Book 38 of Record of Survey at Page 70.

Fee \$5.00 No. 8309  
W.D. BALOGH County Recorder

By Ramon B. Vaughn Deputy



### ENGINEER'S CERTIFICATE

This map correctly represents a survey made by me or under my direction in conformance with the requirements of Chapter 15 of Division 3 of the Business and Professions Code at the request of Bob Boling in August, 1962.

George O. Crawley  
Registered Civil Engineer No. 9455

### ENGINEER'S NOTE

Basis of Bearings for this map is the center line of Grand Avenue shown as N 54° 43' E on Map of Grand Avenue Acres filed in M.B. 11, P. 57 Records of Riverside County.  
• Indicates Monuments found as noted.  
◦ Indicates 3/4" Iron Pipe set and tagged R.E. 9455.

### COUNTY SURVEYOR'S CERTIFICATE

This map has been examined for conformance with the requirements of Chapter 15 of Division 3 of the Business and Professions Code this 4th day of January, 1963.

A. C. KEITH County Surveyor

By A. T. Worsley Deputy