

IN THE COUNTY OF RIVERSIDE

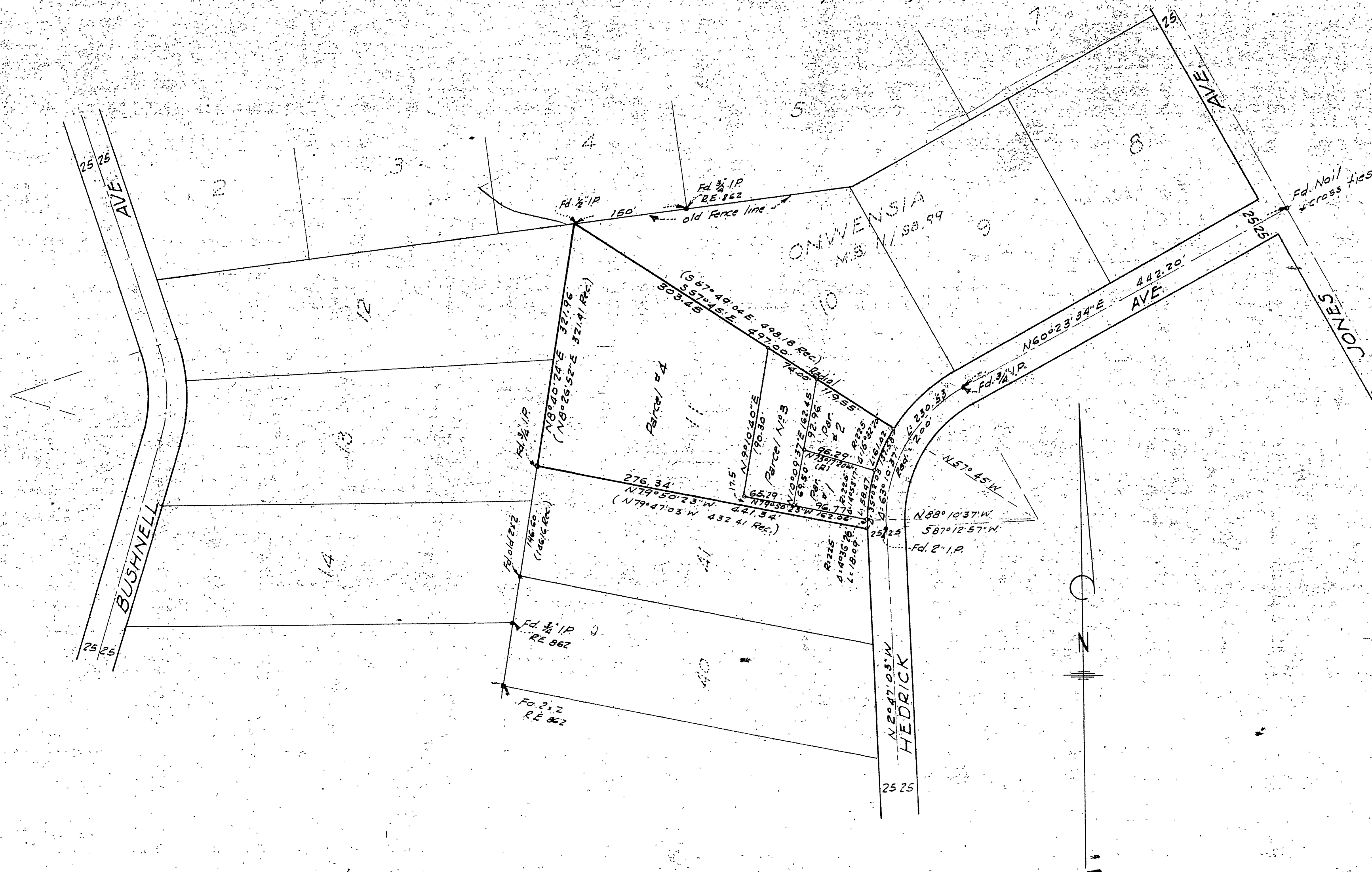
RECORD OF SURVEY

of Lot 11 of ONWENSIA as shown by Map on file in Book 11 pg. 98 & 99.
 Records of Riverside County California. Rancho La Sierra Sepulvedo.
 Nov 1962 Scale 1in=100ft.
 MCKEE and CRAWLEY - Surveyors & Engineers

Filed for the record at the request of County Surveyor
 this 10 day of JAN, 1963
 at 12:05 P.M. in Book 28 of Record of Survey at Page
 71

Fee \$ 6.00 No. _____
 W.D. BALOGH County Recorder

By Carson B. Vaughn Deputy



ENGINEER'S CERTIFICATE

This map correctly represents a survey made by me or under my direction in conformance with the requirements of Chapter 15 of Division 3 of the Business and Professions Code at the request of Winona C. Cook in Nov, 1962.

George O. Crawley
 Registered Civil Engineer No. 9455

ENGINEER'S NOTE

Bearings are based on the center line of HEDRICK AVE. along lots 8, 9, N60°23'34\"/>

Monuments found as noted.
 3/4\"/>

COUNTY SURVEYOR'S CERTIFICATE

This map has been examined for conformance with the requirements of Chapter 15 of Division 3 of the Business and Professions Code this 4th day of January, 1963.

A. C. KEITH County Surveyor

By C. T. Worsley Deputy