

IN THE CITY OF RIVERSIDE RECORD OF SURVEY

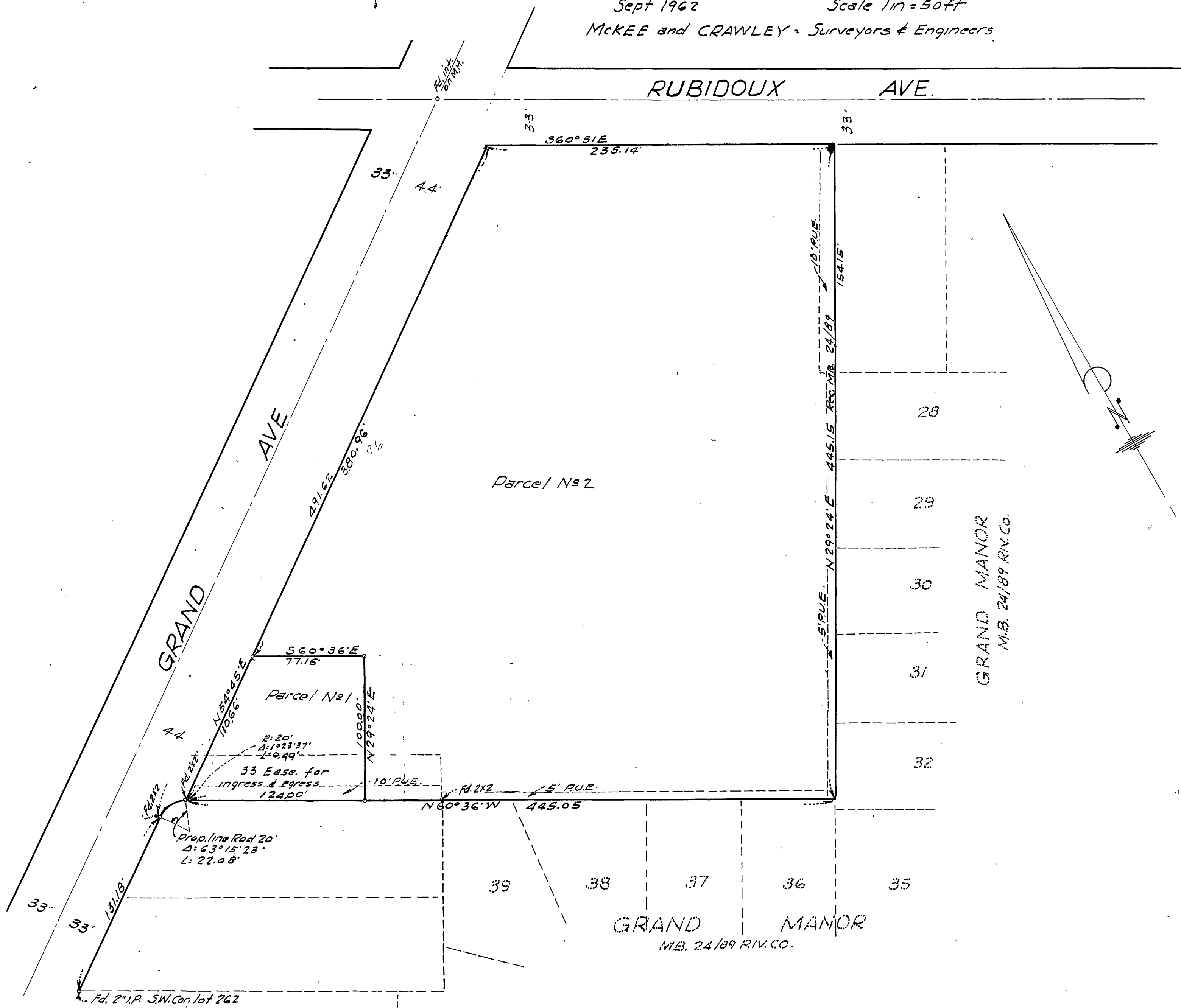
of a Portion of lot 262 of the Lands of the Riverside Land and Irrigating Company as shown by Map on file in Book 4 Pg. 75 of Maps Rec. of Riverside Calif.

Sept 1962 Scale 1in = 50ft
McKEE and CRAWLEY - Surveyors & Engineers

Filed for the record at the request of County Surveyor this 16 day of JAN, 1963 at 3:30 PM. in Book 38 of Record of Survey at Page 77.

Fee \$ 5.00 No. _____
W.D. BALOGH County Recorder

By Arnon B. Vaughn Deputy



ENGINEER'S CERTIFICATE

This map correctly represents a survey made by me or under my direction in conformance with the requirements of Chapter 15 of Division 3 of the Business and Professions Code at the request of Arthur A. Buss in Sept., 1962.

George O. Crawley
Registered Civil Engineer No. 9455

ENGINEER'S NOTE

Note, Bearings are based on the center line of GRAND AVE shown as N54°45'E on M.B. 24 pg. 89 Records of Riverside County Calif. Monuments found as shown 3/4" Iron pipe tagged 9455 set at all corners of Parcel #1 unless otherwise noted. Bearings and distances shown on parcel No 2 are from existing records and not field measurements.

COUNTY SURVEYOR'S CERTIFICATE

This map has been examined for conformance with the requirements of Chapter 15 of Division 3 of the Business and Professions Code this 14th day of January, 1963.

A. C. KEITH County Surveyor

By G. T. Worley Deputy