

IN THE CITY OF RIVERSIDE

RECORD OF SURVEY

OF A PORTION OF LOT 4 OF BALMORAL HEIGHTS, MAP BOOK 11, PAGE 93, RECORDS OF RIVERSIDE COUNTY, CALIFORNIA. LOCATED IN T. 3 S. R. 5 W., S. B. B. AND M.

NOVEMBER 1962

J. F. DAVIDSON, C. E.

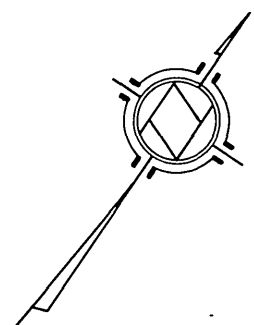
SCALE 1" = 100'

Filed for record at the request of County Surveyor this 25 day of JANUARY, 1963 at 2:15 P.M. in Book 33 of Record of Survey at Page 84

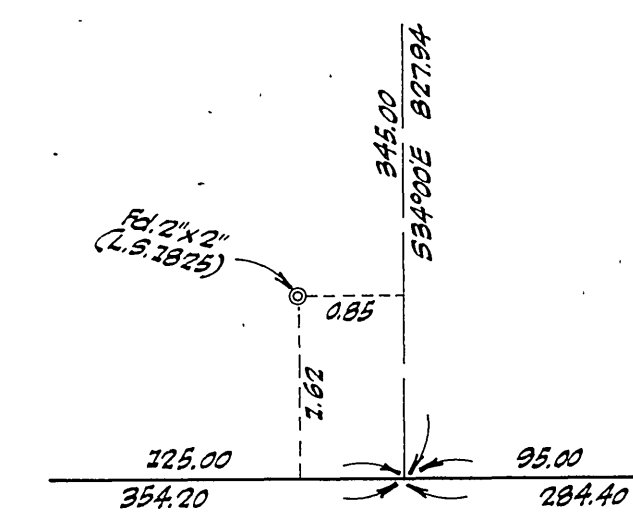
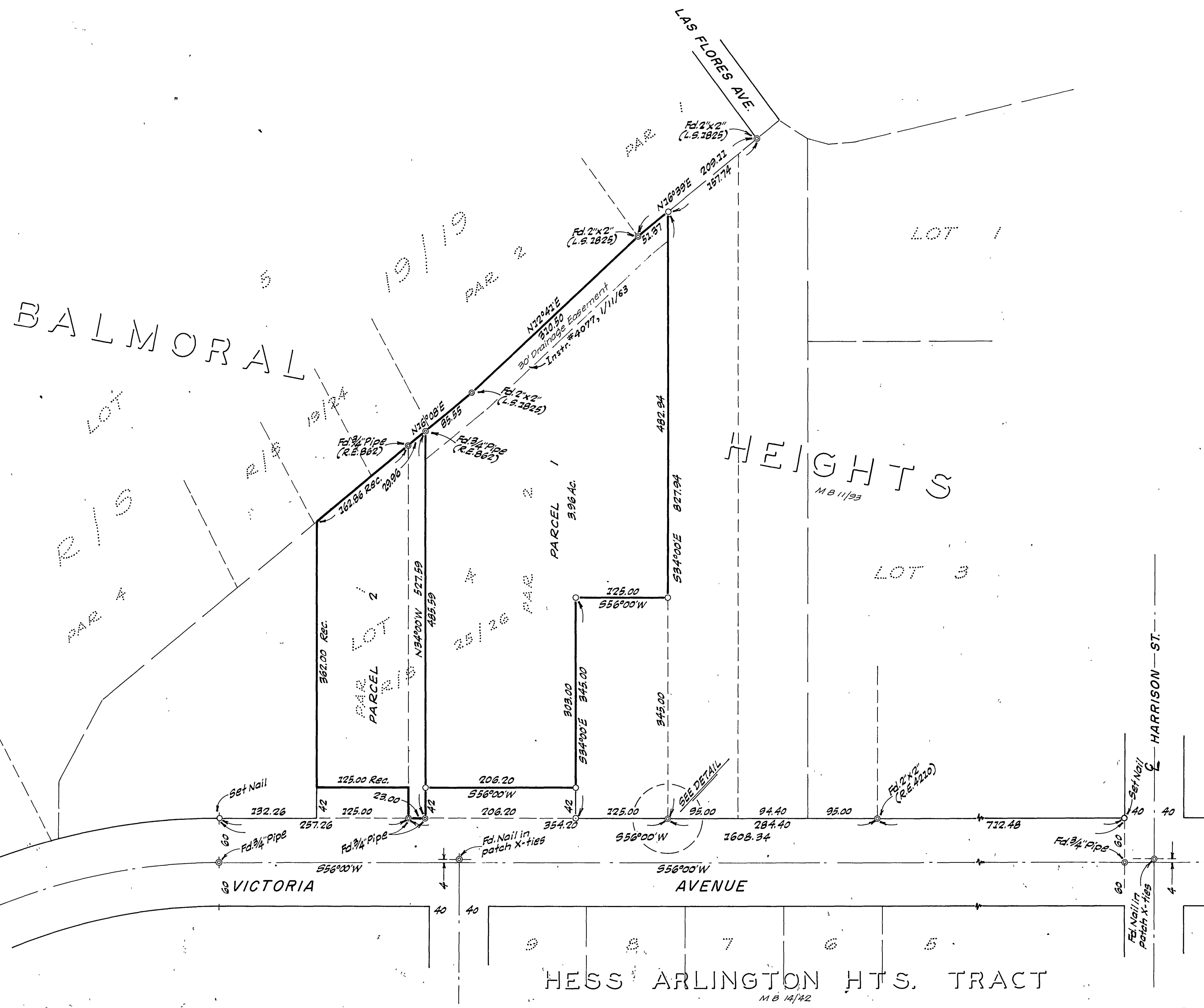
Fee \$ 5.00 No. 8351

W.D. BALOGH County Recorder

By Reun B. Vaughn Deputy



SURVEYED AT REQUEST OF STANLEY J. SCHERER



ENGINEER'S CERTIFICATE

This map correctly represents a survey made by me or under my direction in conformance with the requirements of Chapter 15 of Division 3 of the Business and Professions Code at the request of STANLEY J. SCHERER in November, 1962.

J. F. Davidson
Registered Civil Engineer No. 862.

ENGINEER'S NOTE

Bearings are based on the center line of VICTORIA AVENUE, being S. 56°00' W. as shown on Record of Survey 25/26, Records of Riverside County, Calif.

- Indicates 3/4" Pipe tagged R.E. 862 set.

COUNTY SURVEYOR'S CERTIFICATE

This map has been examined for conformance with the requirements of Chapter 15 of Division 3 of the Business and Professions Code this 23rd day of January, 1963.

A.C. KEITH County Surveyor

By G. T. Worsley Deputy
F.B. 759/30