

IN THE CITY OF RIVERSIDE

RECORD OF SURVEY

OF A PORTION LOT 225, S. C. C. A. LANDS, M. B. 7, PG. 3, RECORDS OF SAN BERNARDINO COUNTY, CALIFORNIA.

SEPT. 1962

J. F. DAVIDSON, C. E.

SCALE 1" = 50'

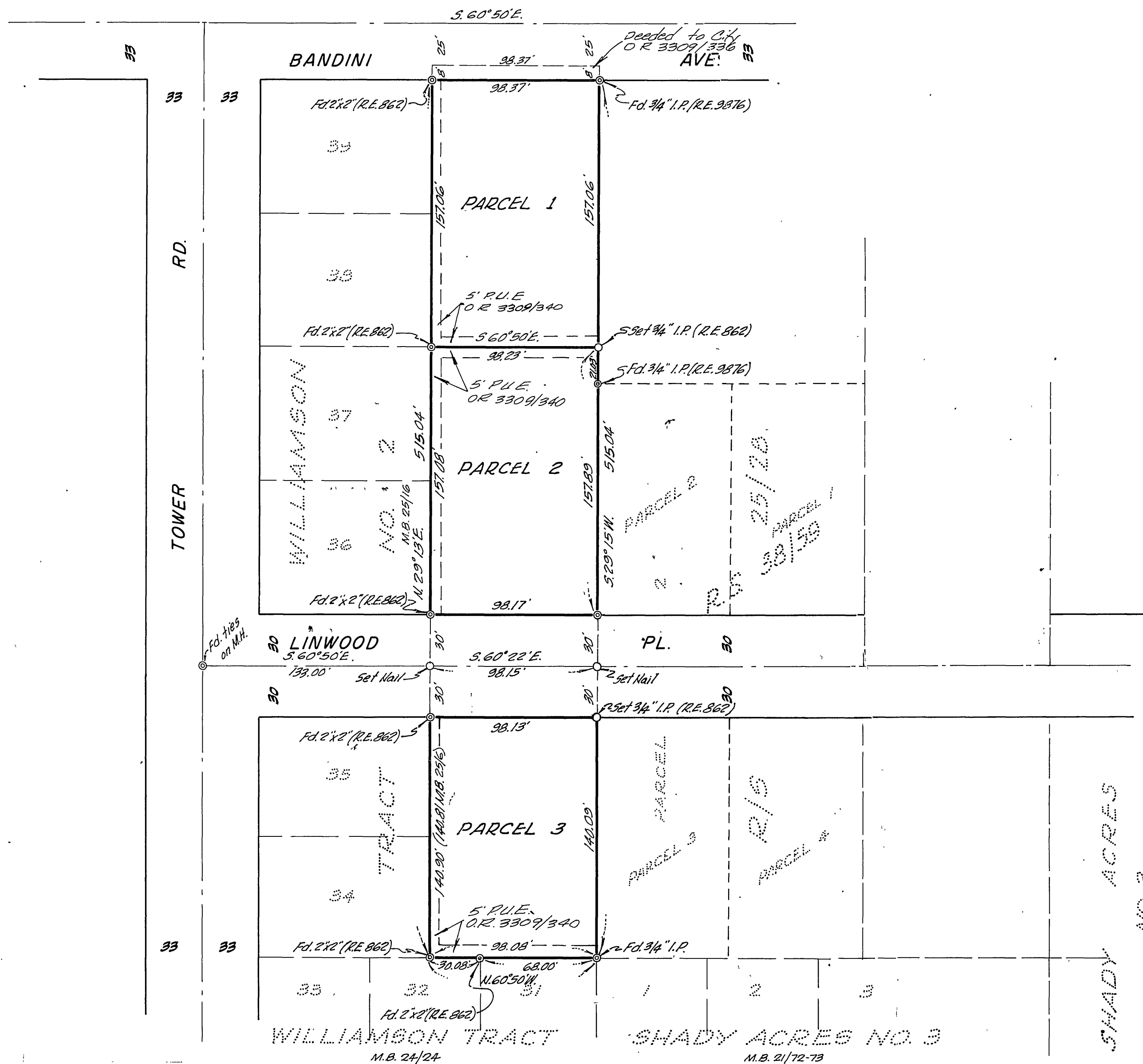
Filed for record at the request of County Surveyor this 6th day of FEBRUARY, 1963 at 2:00 P.M. in Book 38 of Record of Survey at Page 92.

Fee \$5.00 No. 15011

WILLIAM BALOGH County Recorder

By Caron B. Vaughn Deputy

Survey made at the request of EDW. L. WILLIAMSON



ENGINEER'S CERTIFICATE

This map correctly represents a survey made by me or under my direction in conformance with the requirements of Chapter 15 of Division 3 of the Business and Professions Code at the request of EDW. L. WILLIAMSON in September, 1962.

J. F. Davidson
Registered Civil Engineer No. 662.

ENGINEER'S NOTE

Bearings are based on the S.W. line of BANDINI AVE., being S. 60° 50' E., as shown on map of WILLIAMSON TRACT NO. 2 M. B. 7, Pg. 16, Records of Riverside County, California.

COUNTY SURVEYOR'S CERTIFICATE

This map has been examined for conformance with the requirements of Chapter 15 of Division 3 of the Business and Professions Code this 4th day of February, 1963.

A. C. KEITH County Surveyor

By C. T. Wansley Deputy