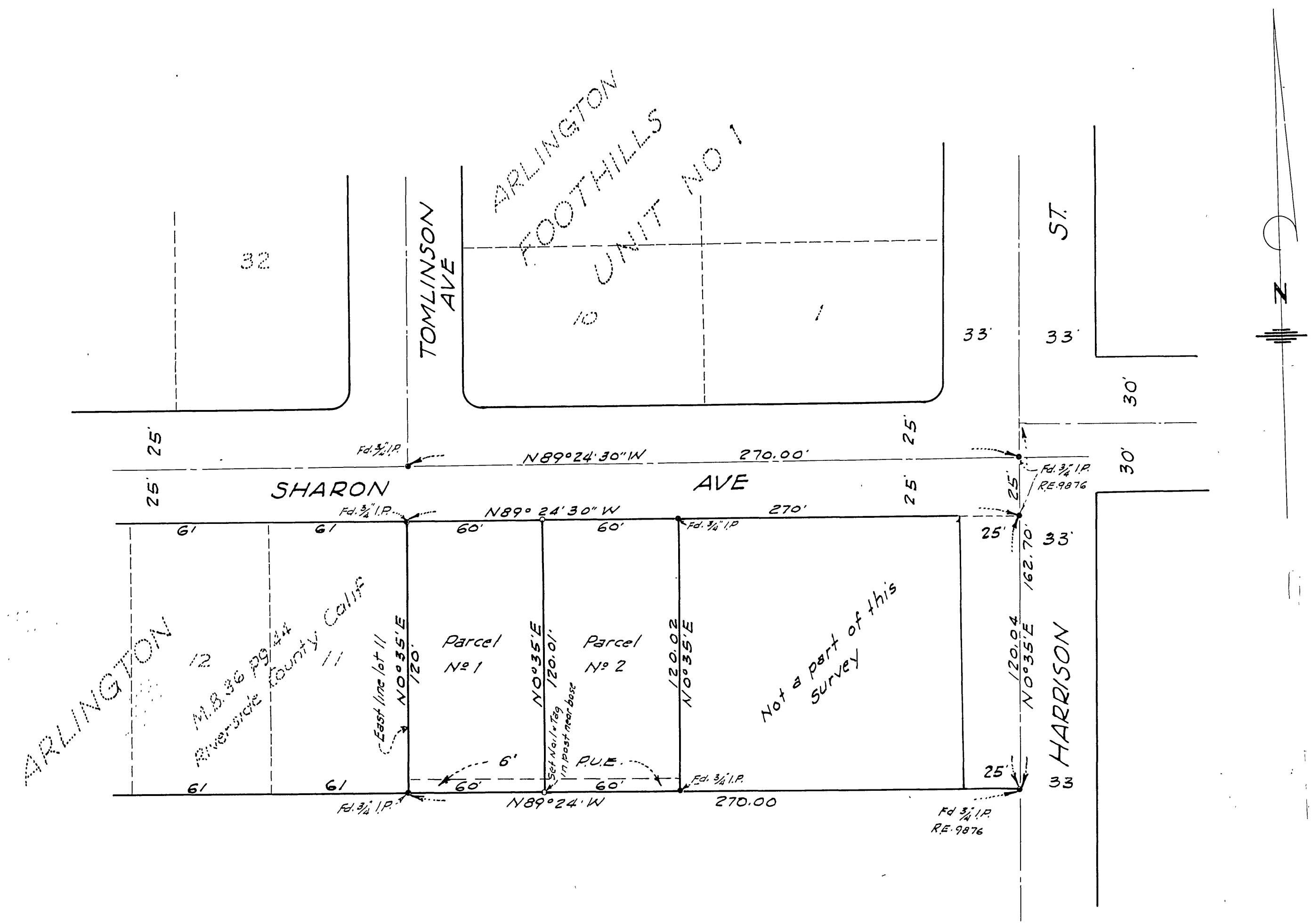


# IN THE CITY OF RIVERSIDE RECORD OF SURVEY

of a Portion of the North 5 Acres of the South half of the North east quarter of the Southeast quarter of Section 12 T. 3 S. R. 6 W. per Sectionized survey of Rancho La Sierra Sepulveda M.B. 6 pg. 70 Records of Riverside County Calif.

Mckee and Crawley ----- Surveyors and Engineers  
Jan. 1963 Scale 1in. = 40ft.

Filed for the record at the request of County Surveyor this 19 day of FEBRUARY, 1963 at 2:20 P.M. in Book 39 of Record of Survey at Page 2  
Fee \$ 5.00 No. \_\_\_\_\_  
William Balogh County Recorder  
By Aaron B. Vaughn Deputy



**ENGINEER'S CERTIFICATE**  
This map correctly represents a survey made by me or under my direction in conformance with the requirements of Chapter 15 of Division 3 of the Business and Professions Code at the request of W.O. Webster in October, 1962.  
George O. Crawley  
Registered Civil Engineer No. 9455

**ENGINEER'S NOTE**  
Bearings are based on the center line of SHARON AVE shown as N89°24'30"W on M.B. 36 pg. 44 Rec. of Riverside Co. Calif. Monuments found as shown o indicates 3/4" I.P. tagged RE. 9455, set at corners unless otherwise shown

**COUNTY SURVEYOR'S CERTIFICATE**  
This map has been examined for conformance with the requirements of Chapter 15 of Division 3 of the Business and Professions Code this 18th day of February, 1963.  
A. C. KEITH County Surveyor  
By G. T. Worsley Deputy  
P.B. 50-49 J.D. 677