

# RECORD OF SURVEY

IN THE COUNTY OF RIVERSIDE

DESCRIPTION OF PROPERTY SURVEYED

BEING A PORTION OF LOTS 2,3,5,6,7 AND II OF EVANS RIO RANCHO AS SHOWN ON MAP BOOK 10 PAGES 52 TO 54. RIVERSIDE COUNTY CALIFORNIA

DECEMBER, 1962

Filed for record at the request of County Surveyor This 13 day of MARCH 1963 at 12:40 P.M. in book 39 of Record of Survey of pages 14-15-16-17-18

Fee None  
No. \_\_\_\_\_  
By W. D. BALOGH  
COUNTY RECORDER  
Caron B. Vaughn  
DEPUTY

### ENGINEER'S CERTIFICATE

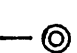
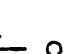

This map correctly represents a survey made by me or under my direction in conformance with the requirements of Chapter 15 of Division 3 of the Business and Professions Code at the request of Riverside County Flood Control & Water Conservation District in October, 1962

John W. Bryant  
CHIEF ENGINEER R.C.F.C. NO. 8822

### NOTE

THE PURPOSE OF THIS MAP IS TO DELINEATE CERTAIN PARCELS OF LAND INCLUDED WITHIN THE RIGHT OF WAY OF A PORTION OF THE SANTA ANA RIVER PROJECT.

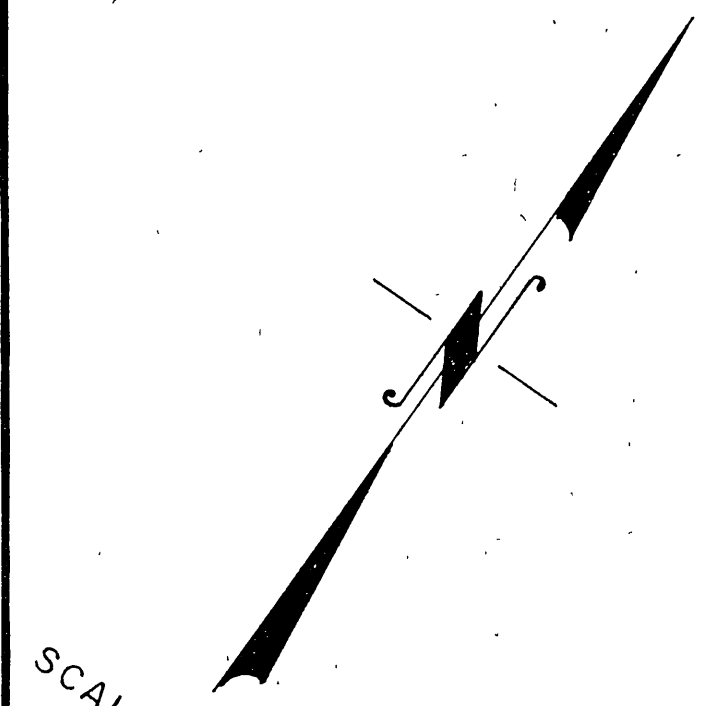
### ENGINEER'S NOTE

1. BASIS OF BEARINGS for this Survey is the SWly. line of R.S. 26 / 88 to 92 ( N 35° 45' 13" W ).
2. Iron Pipe or monuments found; shown thus 
3. Nothing set; position determined by calculation unless otherwise noted, shown thus 
4. 4" Round concrete monuments with Brass Tag marked R.C.F.C. & W.C.D. shown thus 

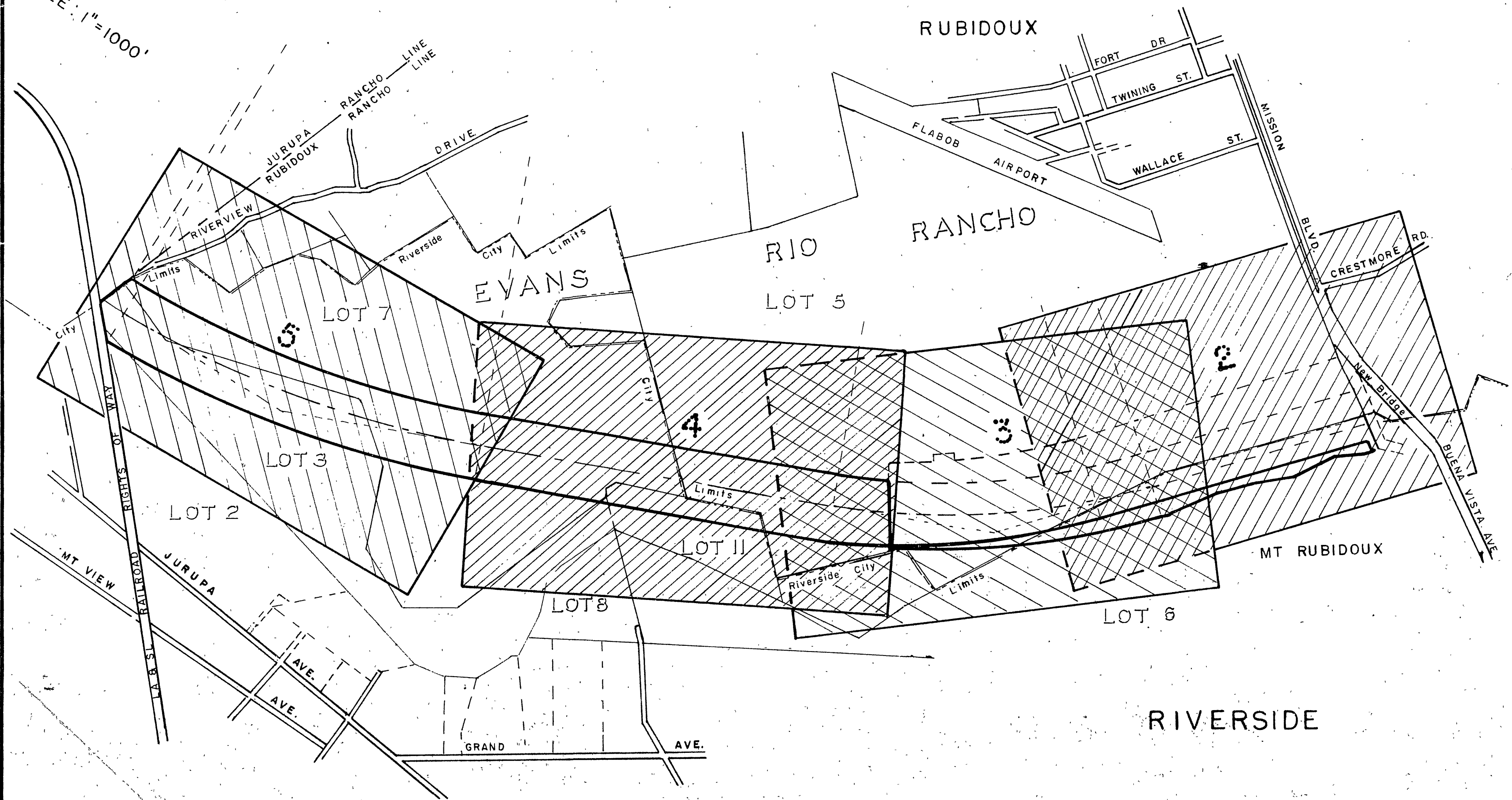
### COUNTY SURVEYOR'S CERTIFICATE

This map has been examined for conformance with the requirements of Chapter 15 of Division 3 of the Business and Professions Code this 8<sup>th</sup> day of MARCH 1963.

A.C. Keith  
COUNTY SURVEYOR  
By [Signature]  
DEPUTY



SCALE: 1"=1000'



ENGINEER'S NOTE

BASIS OF BEARINGS for this survey is the SWly. line of RECORD OF SURVEY 26 pages 88 to 92 (N 35° 45' 13" W).

- 1. Iron Pipe or monuments found are shown thus ---⊙---
- 2. Nothing set; position determined by calculation unless otherwise noted; shown thus ---o---
- 3. 4" Round concrete monuments with Brass Tag marked R.C.F.C. & W.C.D. shown thus ---●---

# RECORD OF SURVEY

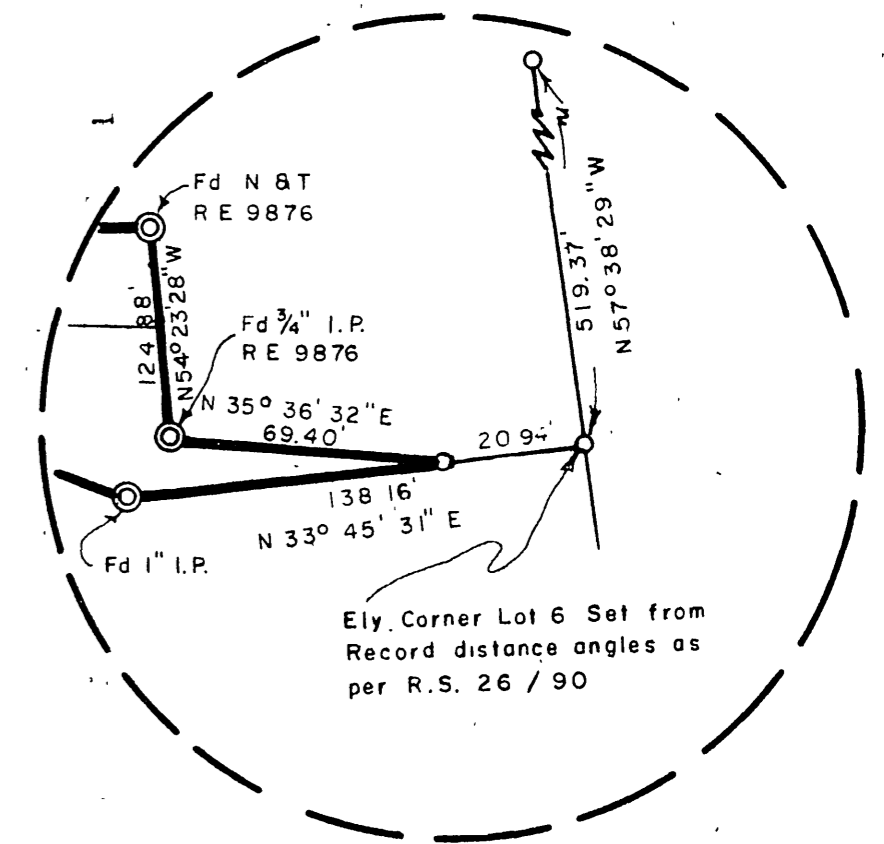
IN THE COUNTY OF RIVERSIDE

## EVANS RIO RANCHO

M.B. 10 / 52 - 54

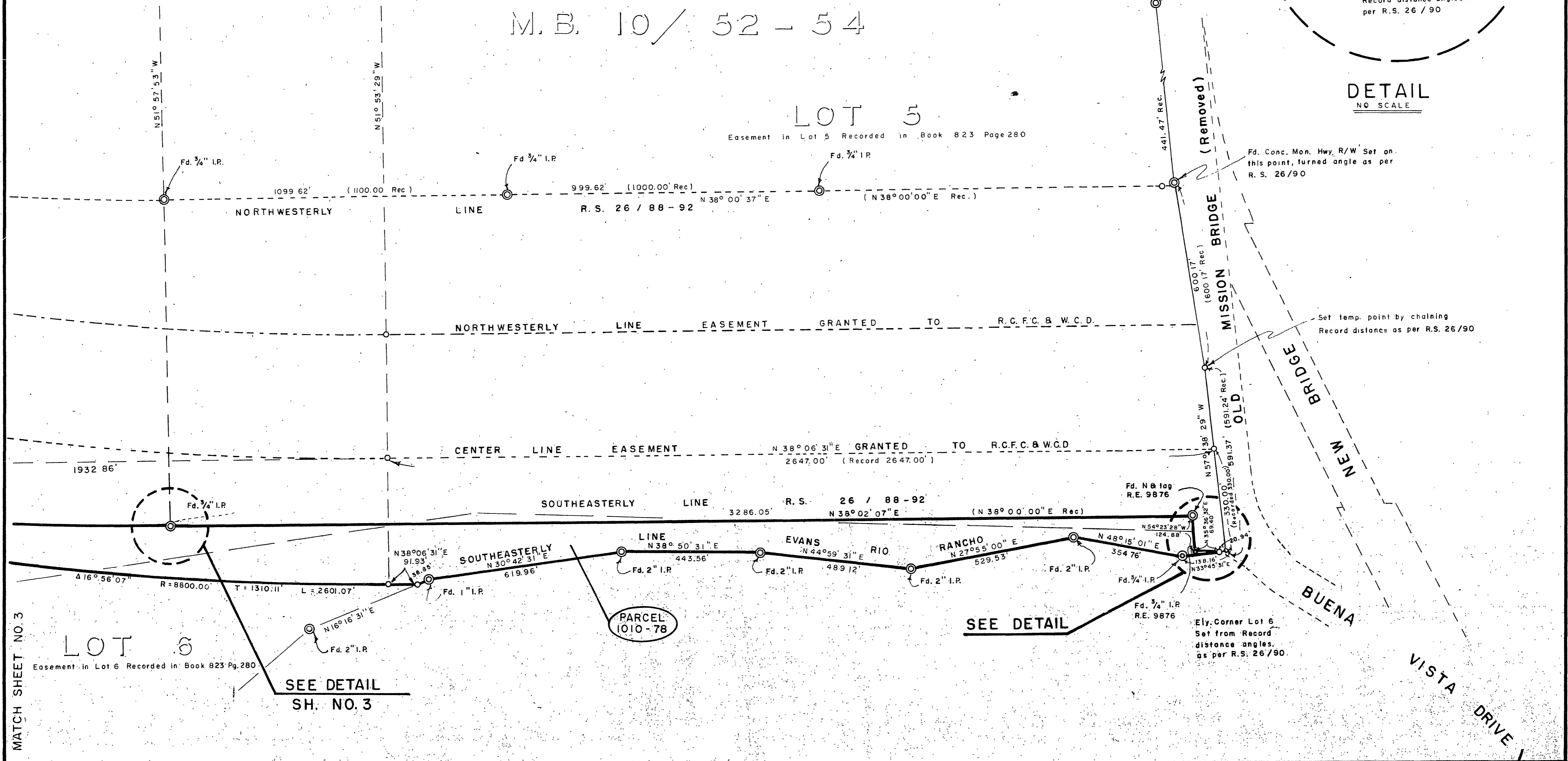
LOT 5

Easement in Lot 5 Recorded in Book 823 Page 280



DETAIL  
NO SCALE

SCALE 1" = 200'



MATCH SHEET NO. 3

SEE DETAIL  
SH. NO. 3

SEE DETAIL

# RECORD OF SURVEY

IN THE COUNTY OF RIVERSIDE

## EVANS RIO RANCHO M.B. 10 / 52 - 54

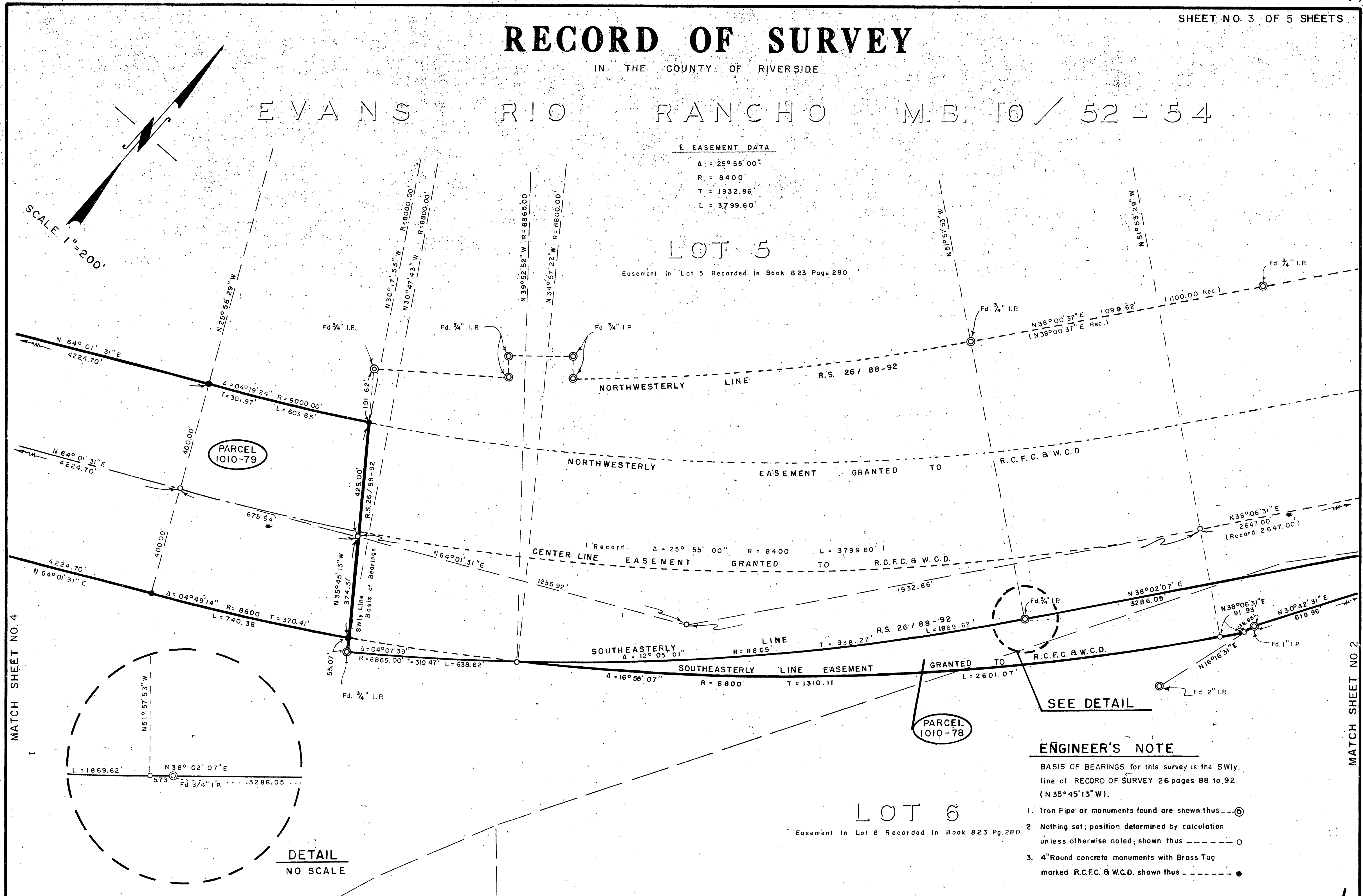
### EASEMENT DATA

$\Delta = 25^{\circ} 55' 00''$   
 $R = 8400'$   
 $T = 1932.86'$   
 $L = 3799.60'$

### LOT 5

Easement in Lot 5 Recorded in Book 823 Page 280

SCALE 1"=200'



PARCEL 1010-79

PARCEL 1010-78

MATCH SHEET NO. 4

MATCH SHEET NO. 2

### ENGINEER'S NOTE

BASIS OF BEARINGS for this survey is the Swily line of RECORD OF SURVEY 26 pages 88 to 92 ( $N 35^{\circ} 45' 13'' W$ ).

1. Iron Pipe or monuments found are shown thus ---⊙---
2. Nothing set; position determined by calculation unless otherwise noted; shown thus ---○---
3. 4" Round concrete monuments with Brass Tag marked R.C.F.C. & W.C.D. shown thus ---●---

### LOT 6

Easement in Lot 6 Recorded in Book 823 Pg. 280

# RECORD OF SURVEY

IN THE COUNTY OF RIVERSIDE

## EVANS RIO RANCHO

### M.B. 10 / 52 - 54

#### LOT 7

Easement in Lot 7 Record in Book 820 Page 188

#### LOT 5

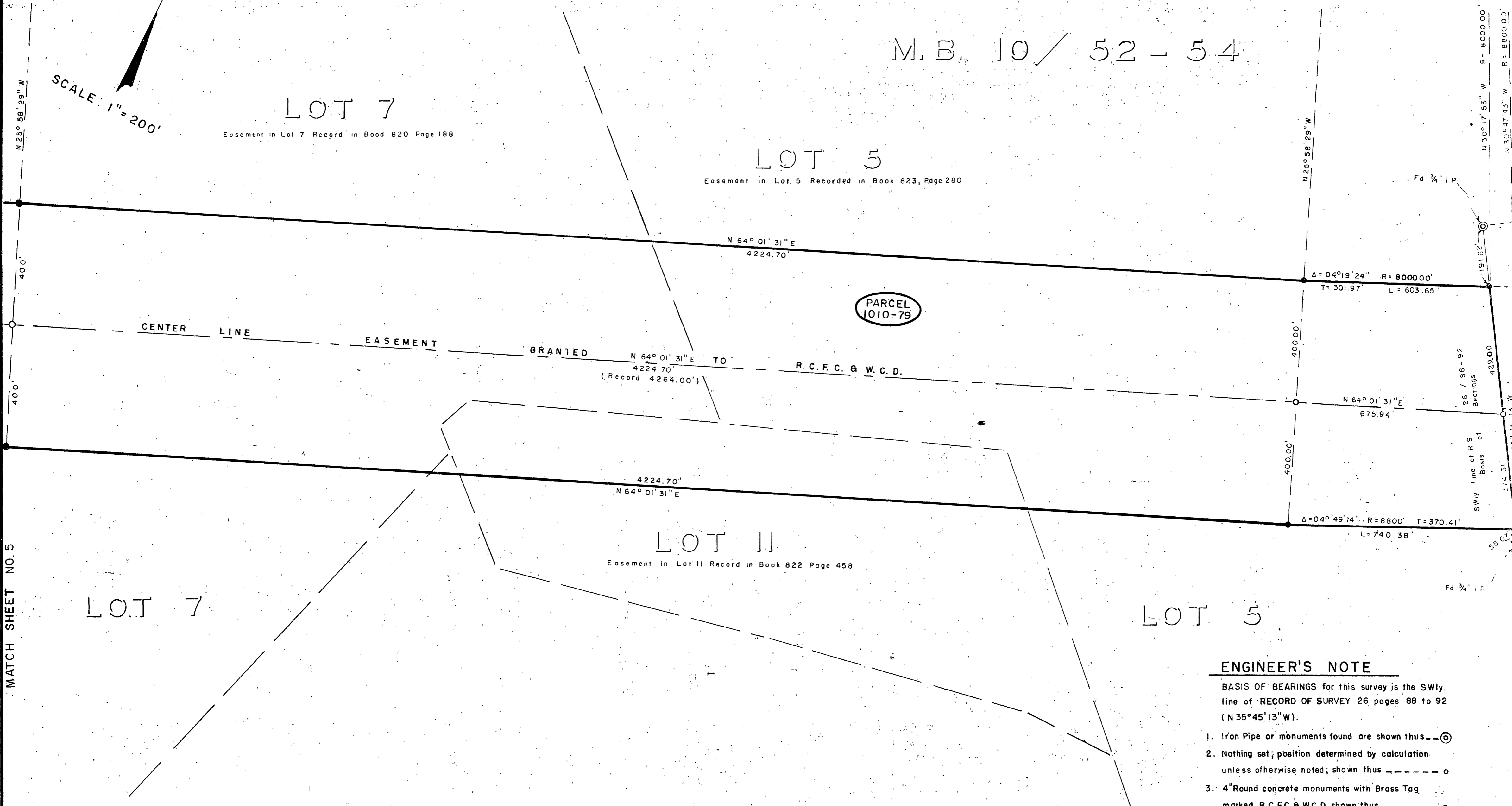
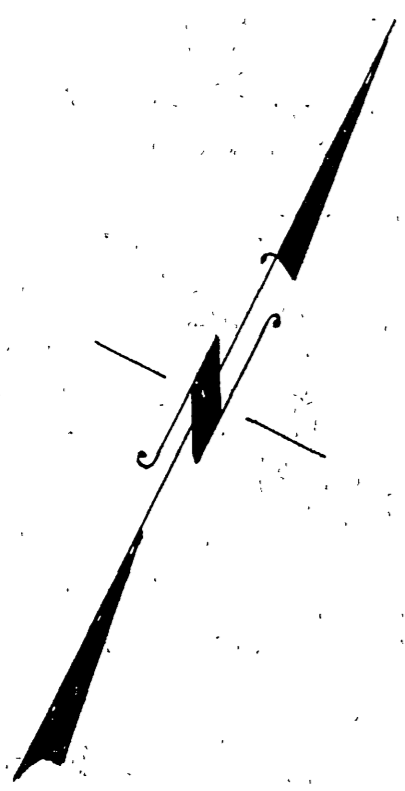
Easement in Lot 5 Recorded in Book 823, Page 280

#### LOT 11

Easement in Lot 11 Record in Book 822 Page 458

PARCEL 1010-79

SCALE: 1" = 200'



#### ENGINEER'S NOTE

BASIS OF BEARINGS for this survey is the SWly. line of RECORD OF SURVEY 26 pages 88 to 92 (N 35° 45' 13" W).

1. Iron Pipe or monuments found are shown thus
2. Nothing set; position determined by calculation unless otherwise noted; shown thus
3. 4" Round concrete monuments with Brass Tag marked R.C.F.C & W.C.D. shown thus

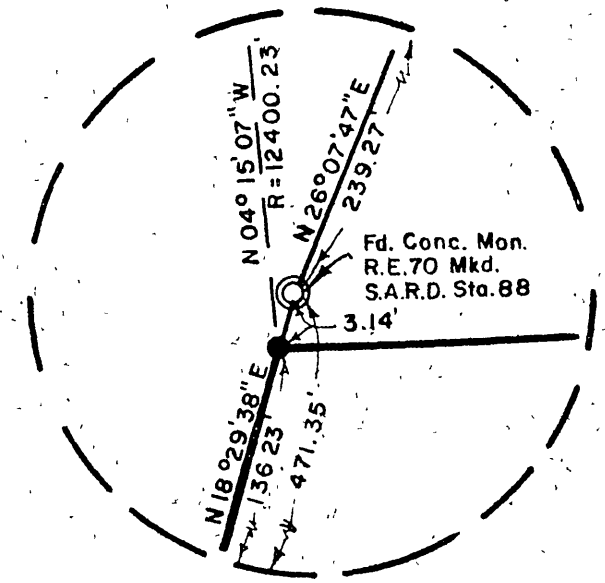
RS39/17

# RECORD OF SURVEY

IN THE COUNTY OF RIVERSIDE

## EVANS RIO RANCHO

### M.B. 10 / 52 - 54



DETAIL "A"

### LOT 7

Easement in Lot 7 Recorded in Book 820 Page 188

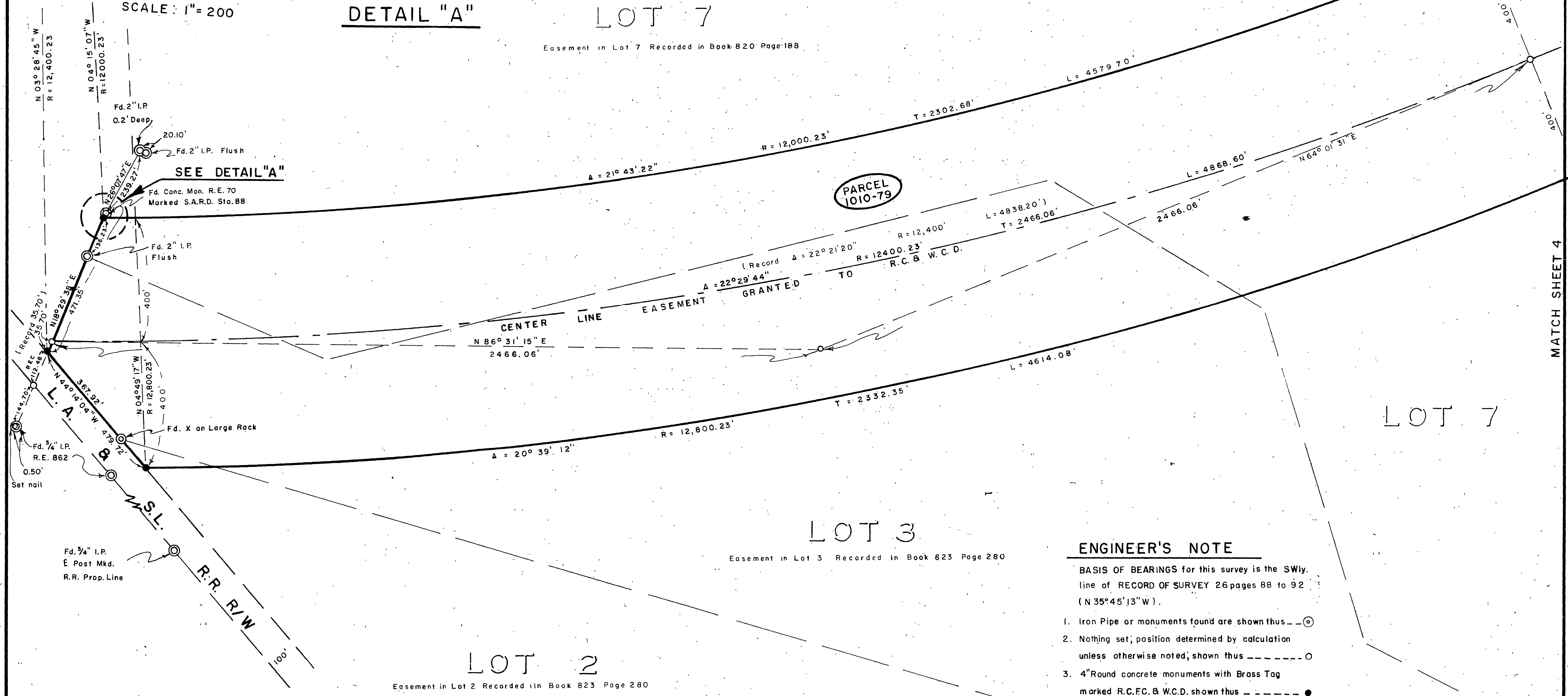
### LOT 3

Easement in Lot 3 Recorded in Book 823 Page 280

### LOT 2

Easement in Lot 2 Recorded in Book 823 Page 280

SCALE: 1" = 200



PARCEL 1010-79

#### ENGINEER'S NOTE

BASIS OF BEARINGS for this survey is the SWly. line of RECORD OF SURVEY 26 pages 88 to 92 (N 35° 45' 13" W).

1. Iron Pipe or monuments found are shown thus — ⊙ —
2. Nothing set; position determined by calculation unless otherwise noted; shown thus — — — — — ○ — — — — —
3. 4" Round concrete monuments with Brass Tag marked R.C.F.C. & W.C.D. shown thus — — — — — ● — — — — —

MATCH SHEET 4