

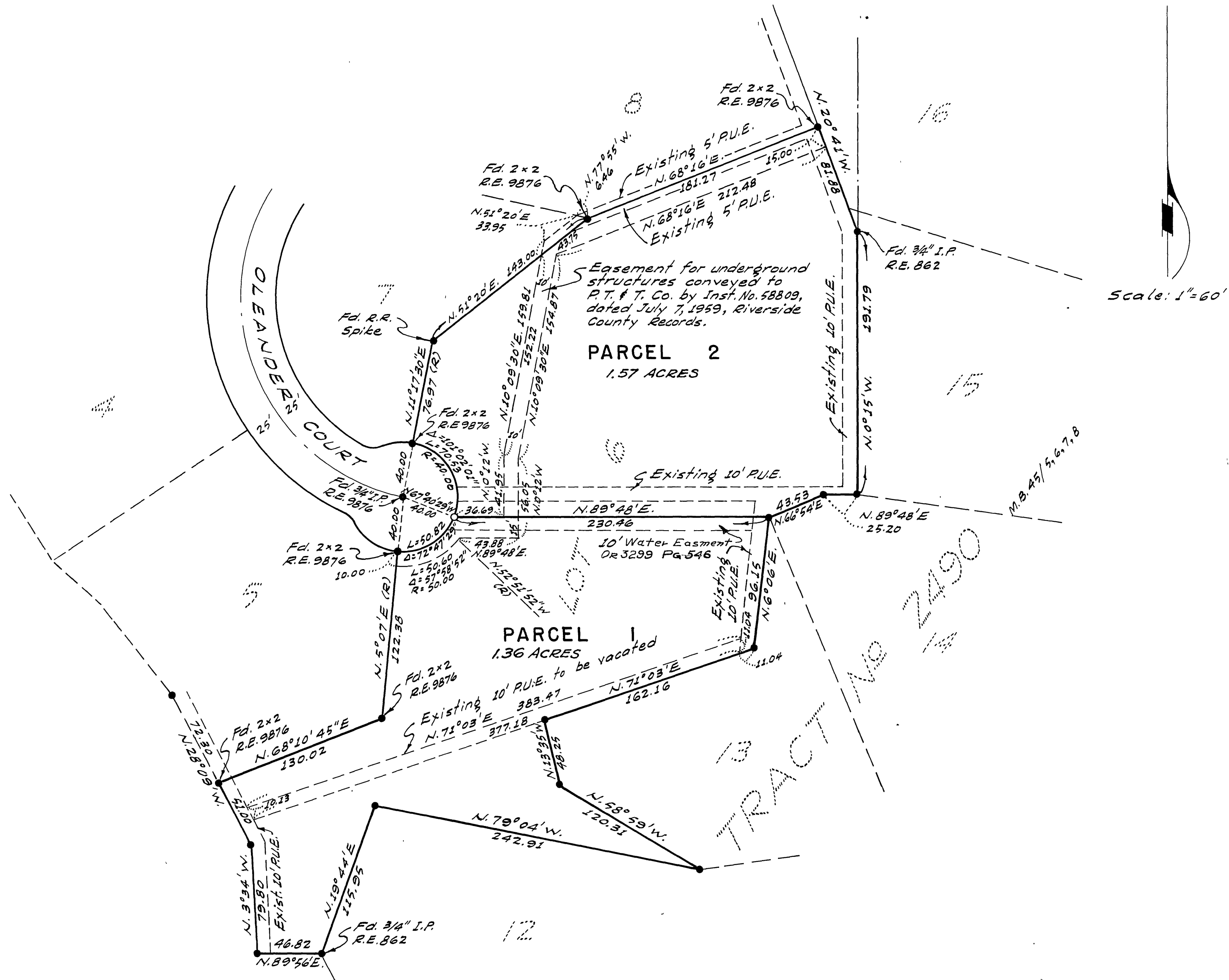
IN THE CITY OF RIVERSIDE RECORD OF SURVEY

OF LOT 6 OF OLEANDER HILLS PER MAP BOOK 35
PAGES 36 AND 37, RECORD OF RIVERSIDE COUNTY,
CALIFORNIA.

Filed for Record at request of County Surveyor this 13 day of
MARCH, 1963, at 12:42 P.M. in Book 39
of Record of Survey at Page 21
Fee \$ 5.00 No. _____

WILLIAM D. BALOGH County Recorder
By Deon B. Vaughn Deputy

~BY~
ALBERT A. WEBB ASSOCIATES
CIVIL ENGINEERS
October 1962 Riverside, Calif.
Scale: 1"=60'



ENGINEER'S CERTIFICATE

This map correctly represents a survey made by me or under my direction in conformance with the requirements of Chapter 15 of Division 3 of the Business and Profession Code at the request of Dr. Fred Clark in October 1962.

Ernest N. Webb
Registered Civil Engineer No 9876

ENGINEER'S NOTE:

Basis of Bearings is the East Line of Lot 6 of Oleander Hills taken as N. 0° 15' W. as same is shown by map on file in Book 35 of Maps, pages 36 and 37, Riverside County Records.

Found 2x2 stakes not tagged, at all points shown thus ● unless otherwise noted.

Set 2x2 Redwood stakes tagged R.E. 9876 at all points shown thus ○

COUNTY SURVEYOR'S CERTIFICATE

This map has been examined for conformance with the requirements of Chapter 15 of Division 3 of the Business and Profession Code this 8th day of MARCH 1963
A.G. KEITH County Surveyor

By G. T. Worsley Deputy