

IN THE CITY OF RIVERSIDE

RECORD OF SURVEY

OF LOT 5 OF UNIVERSITY HILLS NO. 1 RECORDED IN BOOK 34 OF MAPS PAGES 71 & 72, RIVERSIDE COUNTY RECORDS

JANUARY 1963

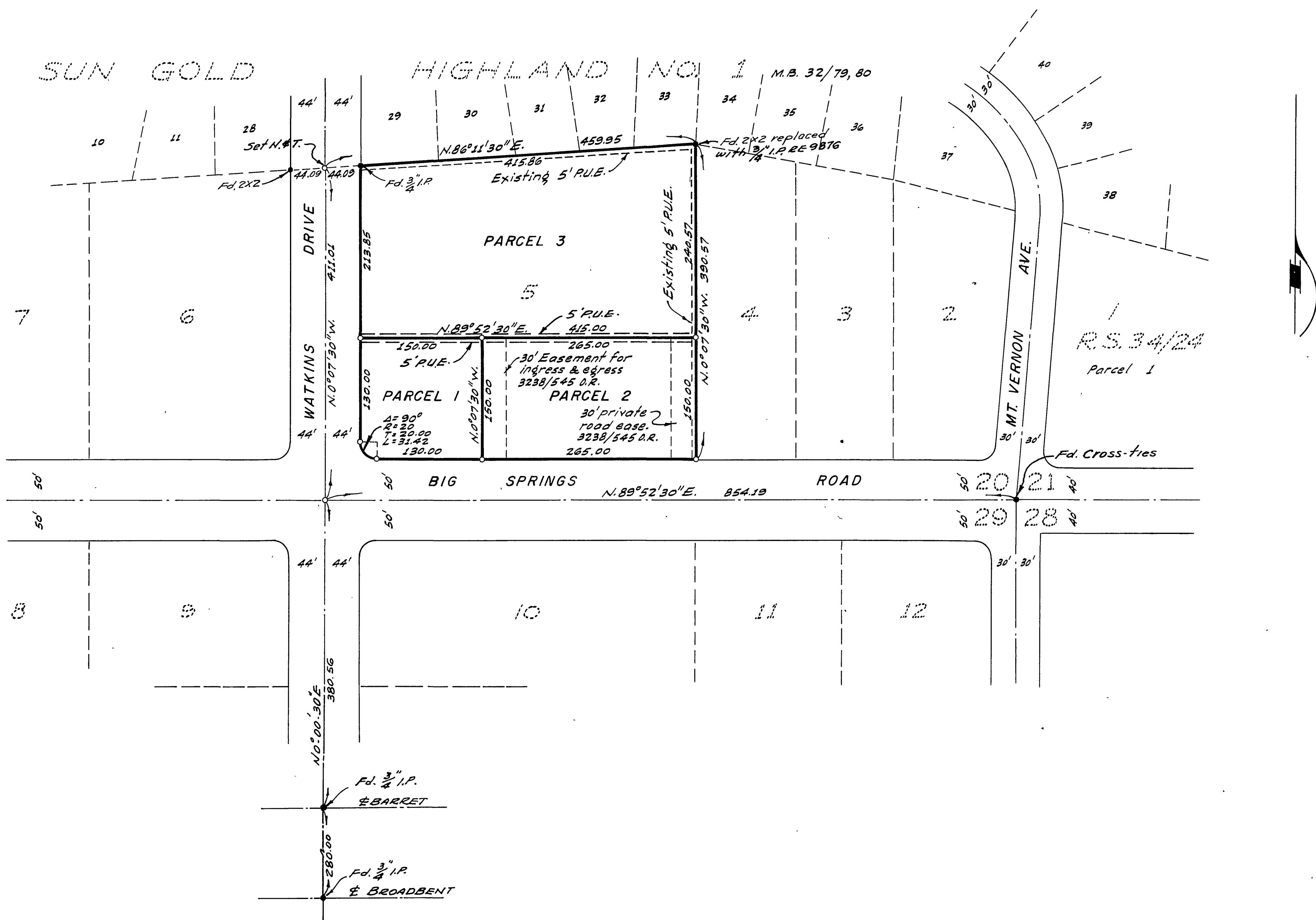
SCALE 1" = 100'

ALBERT A. WEBB ASSOCIATES
Civil Engineers

Filed for Record at request of County Surveyor this 13 day of MARCH, 1963 at 12:40 P.M. in Book 39 of Record of Survey of Page 22
Fee \$ 5.00 No. 22087

WILLIAM D. BALOGH, County Recorder

By Carson B. Vaughn Deputy



ENGINEER'S CERTIFICATE

This map correctly represents a survey made by me or under my direction in conformance with the requirements of Chapter 15 of Division 3 of the Business and Profession Code at the request of BILL L. REID in January 1963.

Samuel N. Webb
Registered Civil Engineer No 9876

ENGINEER'S NOTE:

1. Basis of Bearings is the centerline of Big Springs Road taken as N. 89° 52' 30" E as same is shown by map of University Hills No 1 recorded in Book 34 of Maps pages 71 & 72, Riverside Co. Records
2. Found monuments as noted at all points shown thus ●
3. Set 3/4" I.P. tagged R.E. 9876 at all points shown thus ○ unless otherwise noted.

COUNTY SURVEYOR'S CERTIFICATE

This map has been examined for conformance with the requirements of Chapter 15 of Division 3 of the Business and Profession Code this 8th day of MARCH, 1963
A.G. KEITH County Surveyor

By G. T. Worsley Deputy