

IN THE COUNTY OF RIVERSIDE RECORD OF SURVEY

of a Portion of Lot 8 BLK. 17, LA GRANADA as Recorded in M.B. 12 pg. 42 to 51 incl. Records of Riverside County California in Rancho La Sierra Sepulveda

Filed for the record at the request of County Surveyor this 19th day of MARCH, 1963 at 11:45 AM. in Book 39 of Record of Survey at Page 30

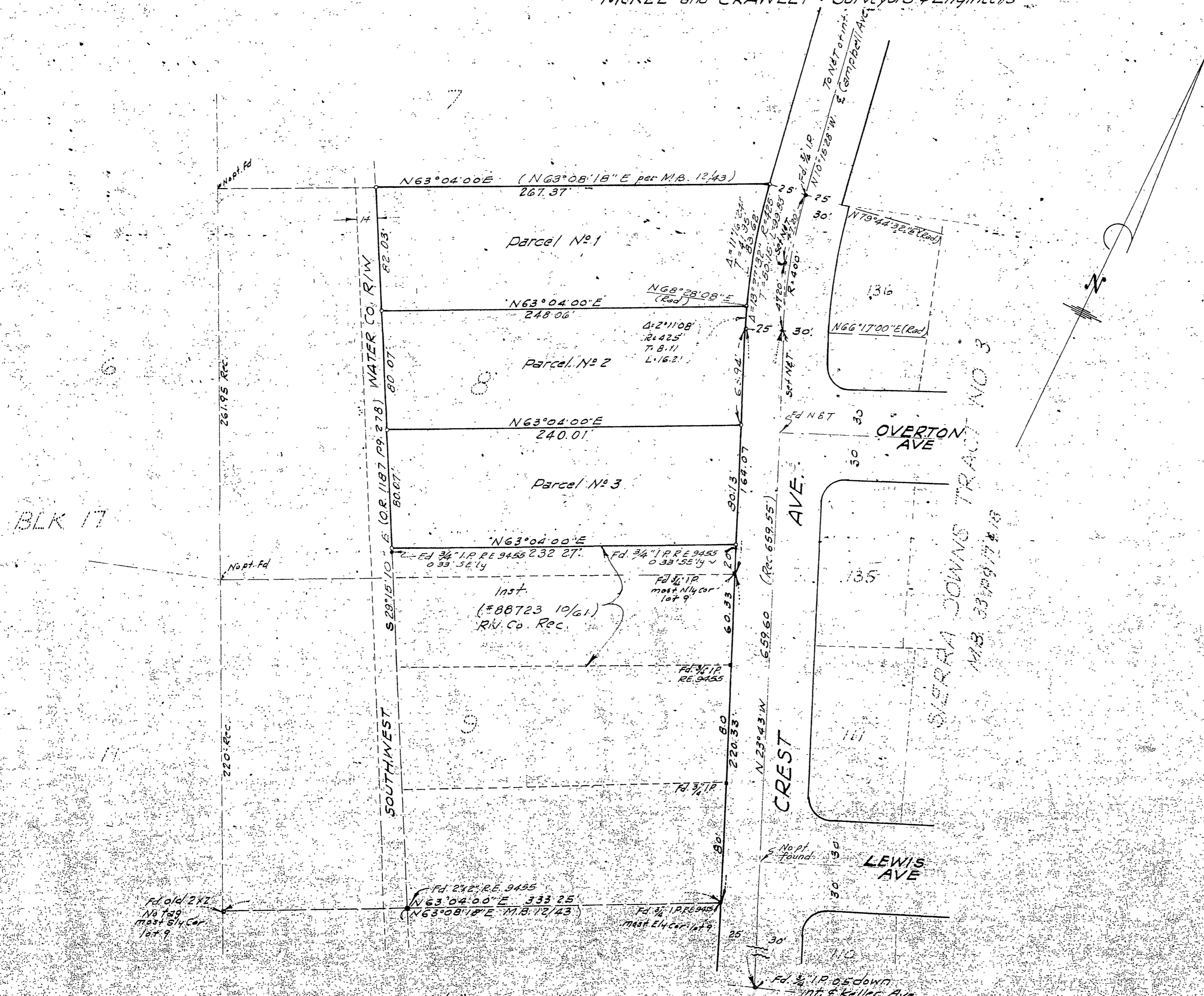
Fee \$ 5.00 No. 60112

WILLIAM D. BALOGH County Recorder

By Garrett B. Vaughn Deputy

Feb. 1963
McKee and CRAWLEY Surveyors & Engineers

Scale 1 in = 50 ft.



SURVEYOR'S CERTIFICATE

This map correctly represents a survey made by me or under my direction in conformance with the requirements of Chapter 15 of Division 3 of the Business and Professions Code at the request of Robert A. Pinzotto in February, 1963.

George O. Crawley
RE. 9455

NOTES:

Note - 3/4" Iron pipe tagged RE. 9455 set at all corners shown thus.
Monuments found as noted.
Bearings are based on the easterly line of lots 8, 9 and 10 BLK 17 LA GRANADA as per M.B. 12 pg. 42 to 51 Riv. Co. Records shown as N 23° 43' W.

COUNTY SURVEYOR'S CERTIFICATE

This map has been examined for conformance with the requirements of Chapter 15 of Division 3 of the Business and Professions Code this 18th day of March, 1963.

A. C. KEITH County Surveyor

By G. T. Wasyly Deputy