

# RECORD OF SURVEY

IN THE COUNTY OF RIVERSIDE

OF A PORTION OF BLOCK 6, OF LA SIERRA HEIGHTS TRACT NO. 3, RECORDED IN BOOK 8 OF MAPS, PAGE 27, RECORDS OF RIVERSIDE COUNTY, STATE OF CALIFORNIA.

IN T.3S, R.6W., SBM

ARRCHEAD ENGINEERING CORPORATION — SURVEYING

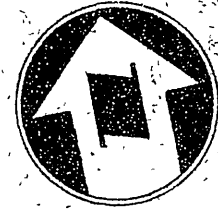
MARCH 1963

Filed for record at the request of County Surveyor this 26 day of APRIL, 1963 at 1:55 P.M. in Book 39 of Record of Survey at Page 46.

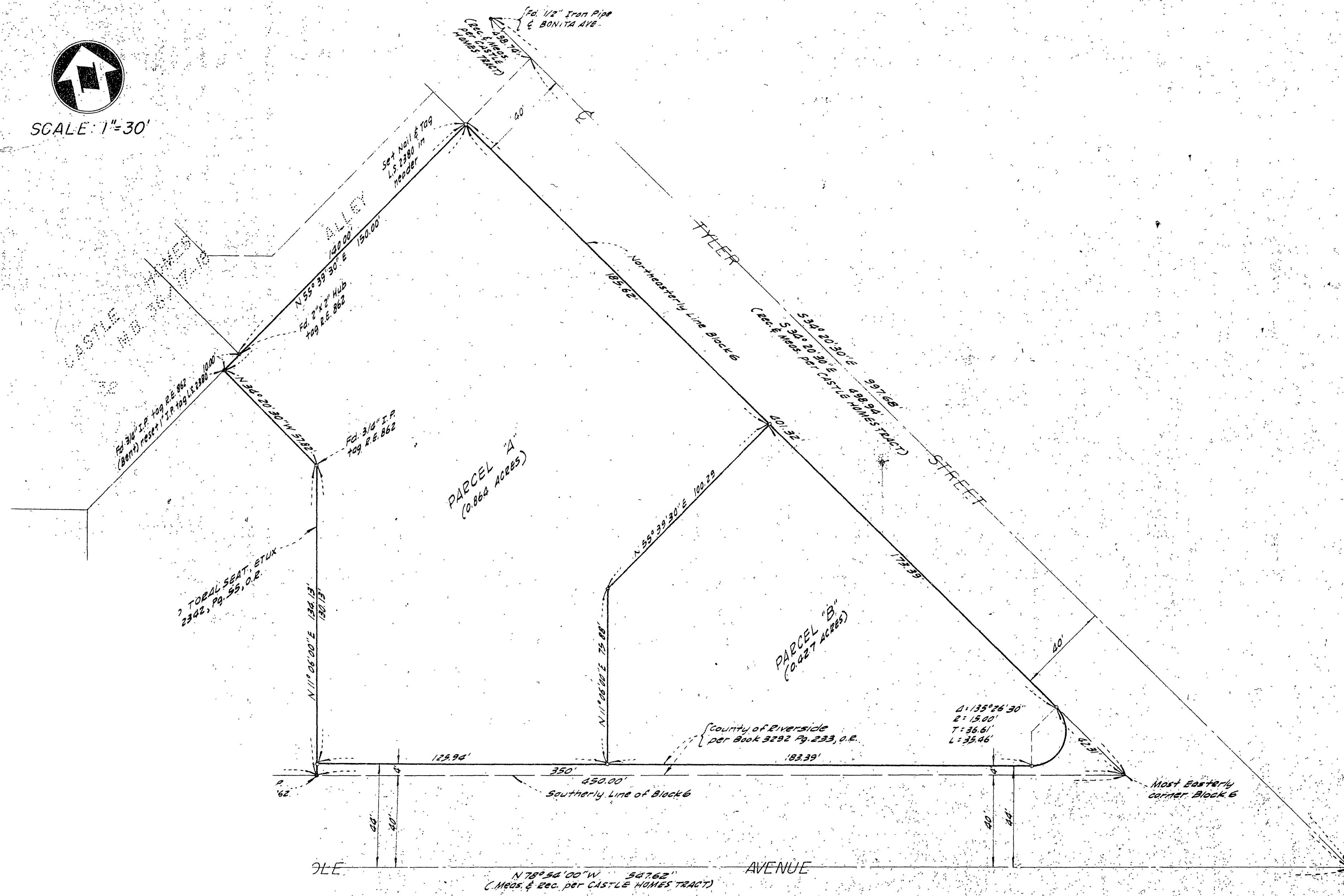
Fee \$ 5.00 No. 10104

W.D. BALOGH County Recorder

By Aaron B. Vaughn Deputy



SCALE: 1"=30'



### SURVEYOR'S CERTIFICATE

This map correctly represents a survey made by me or under my direction in conformance with the requirements of Chapter 15 of Division 3 of the Business and Professions Code at the request of SHELL OIL COMPANY in MARCH, 1963.

*Aaron B. Vaughn*  
LICENSED SURVEYOR NO 2380

### SURVEYOR'S NOTES:

- Bearings are based on the center line of HOLE AVENUE being N 78° 54' 00" W on the map of CASTLE HOMES, Map Book 36, Pages 17 and 18, Records of Riverside County, California.
- Indicates 1" Iron Pipe Set, tagged L.S. 2380
- Indicates monuments found. (as shown)

### COUNTY SURVEYOR'S CERTIFICATE

This map has been examined for conformance with the requirements of Chapter 15 of Division 3 of the Business and Professions Code this 26 day of April, 1963.

A.C. KEITH County Surveyor

By *A.C. Keith*