

IN THE COUNTY OF RIVERSIDE RECORD OF SURVEY

OF A PORTION OF THE S.E. 1/4 OF SECTION 32 & THE S.W. 1/4 OF SECTION 33, TOWNSHIP 2 SOUTH, RANGE 4 WEST. S.B.M.

MARCH 1963

ROBERT L TAYLOR
CIVIL ENGINEER

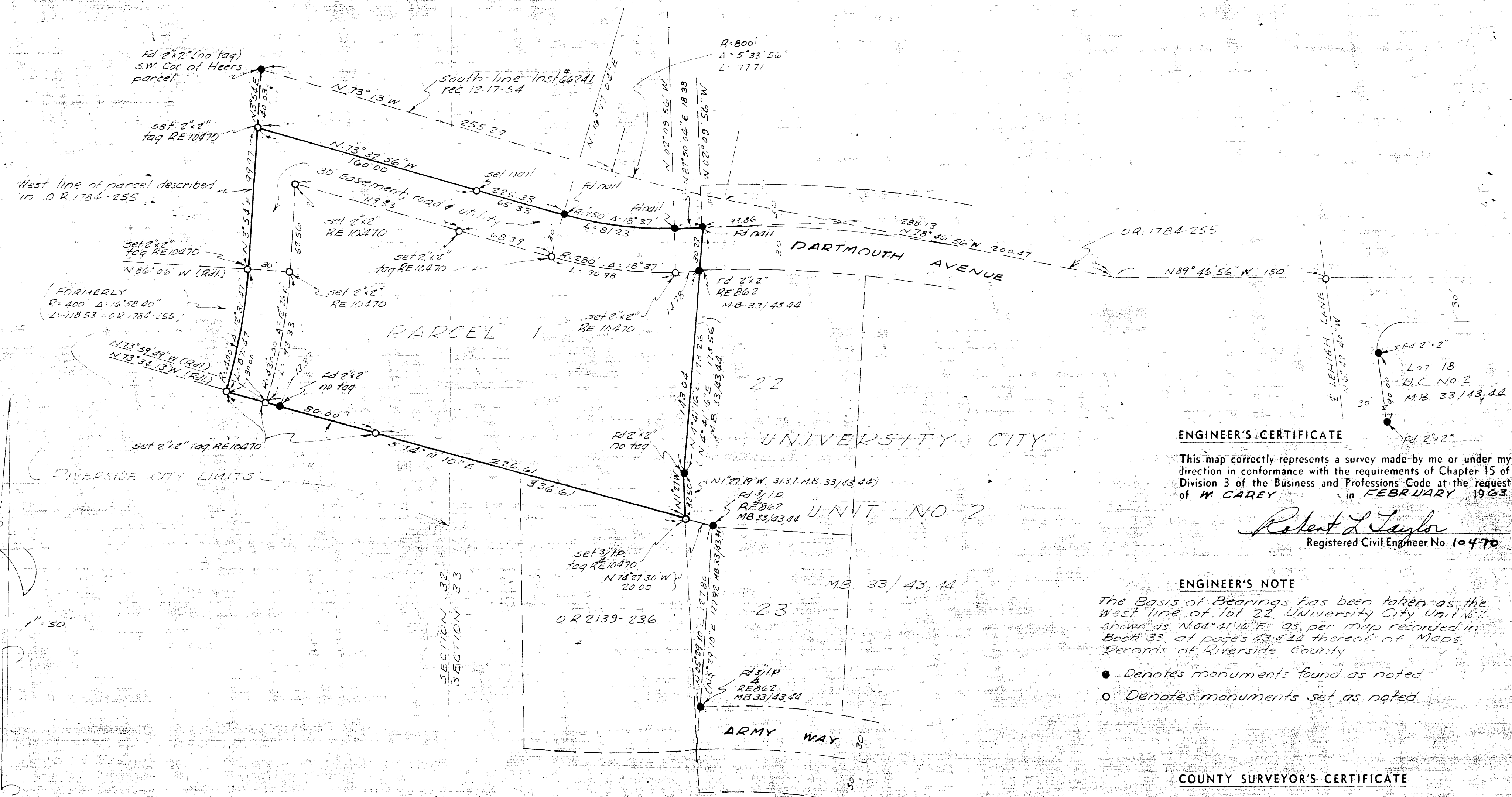
SCALE 1" = 50'

Filed for the record at the request of County Surveyor
this 6th day of May 1963
at 2:40 P.M. in Book 39 of Record of Survey at Page
55

Fee \$ 5.00 No. _____

W.D. BALOGH County Recorder

By Ramon B. Laughlin Deputy



ENGINEER'S CERTIFICATE

This map correctly represents a survey made by me or under my direction in conformance with the requirements of Chapter 15 of Division 3 of the Business and Professions Code at the request of W. CAREY in FEBRUARY 1963

Robert L Taylor
Registered Civil Engineer No. 10470

ENGINEER'S NOTE

The Basis of Bearings has been taken as the west line of lot 22, University City Unit No. 2 shown as N 04° 41' 16" E as per map recorded in Book 33, at pages 43 & 44 thereof of Maps, Records of Riverside County

- Denotes monuments found as noted
- Denotes monuments set as noted

COUNTY SURVEYOR'S CERTIFICATE

This map has been examined for conformance with the requirements of Chapter 15 of Division 3 of the Business and Professions Code this 25th day of April 1963

A. C. KEITH County Surveyor

By A. T. Worsley Deputy