

IN THE CITY OF RIVERSIDE

RECORD OF SURVEY

OF A PORTION OF LOT 5, BLOCK 27 OF R. L. AND I. CO. LANDS, M. B. 1/70, REC. OF SAN BERNARDINO COUNTY, CALIF. LOCATED IN T. 3 S. R. 5 W., S. B. B. AND M.

MARCH 1963

J. F. DAVIDSON, C. E.

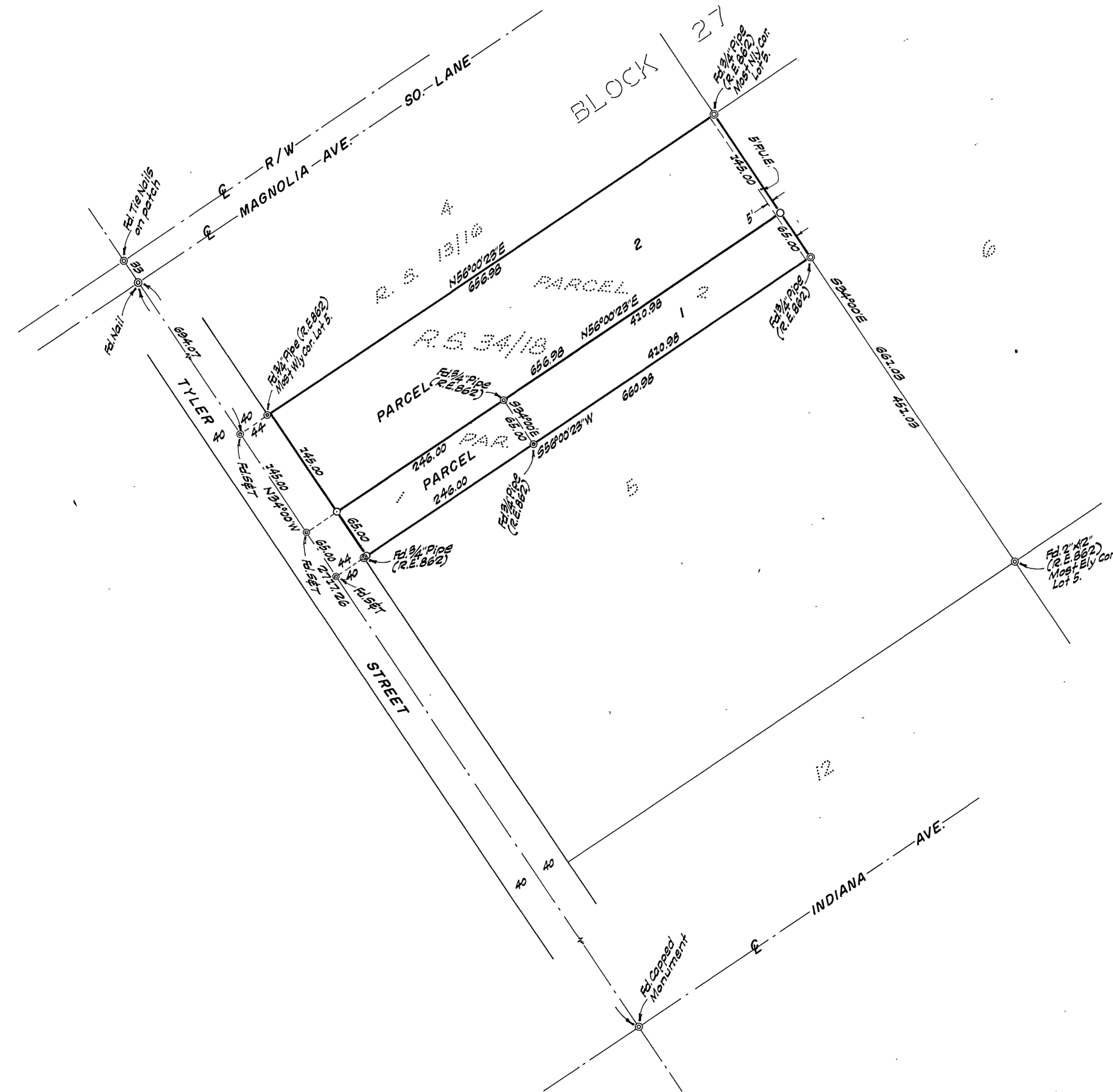
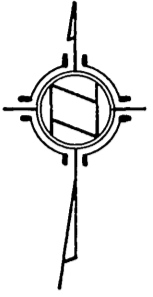
SCALE 1" = 100'

Filed for record at the request of County Surveyor this 14th day of May, 1963 at 2:30 P.M. in Book 39 of Record of Survey at Page 65

Fee \$ 5.⁰⁰ No. 10862

W.D. BALOGH County Recorder

By Queen B. Vaughan Deputy



SURVEYED AT REQUEST OF VELMA STAHLMAN

ENGINEER'S CERTIFICATE

This map correctly represents a survey made by me or under my direction in conformance with the requirements of Chapter 15 of Division 3 of the Business and Professions Code at the request of C. STAHLMAN in March, 1963.

J. F. Davidson
Registered Civil Engineer No. 862.

ENGINEER'S NOTE

Bearings are based on the center line of TYLER STREET, being N. 34°00'W. as shown on Record of Survey 34/18, Records of Riverside County, Calif.

- Indicates 1/4" Pipe tagged R.E. 862 set.

COUNTY SURVEYOR'S CERTIFICATE

This map has been examined for conformance with the requirements of Chapter 15 of Division 3 of the Business and Professions Code this 13th day of May, 1963.

A.C. KEITH County Surveyor

By C. T. Worsley Deputy
FB 681-60

(Handwritten signature)