

IN THE CITY OF RIVERSIDE RECORD OF SURVEY

OF A PORTION OF THE SW 1/4 OF SECTION 31 T2S R4W, SBB&M,
AND A PORTION OF LOT 11 OF THE CHURCH SUBDIVISION,
M.B. G-55 RECORDS OF RIVERSIDE COUNTY CALIFORNIA

FEBRUARY 1963

J.F. DAVIDSON, CIVIL ENGINEER

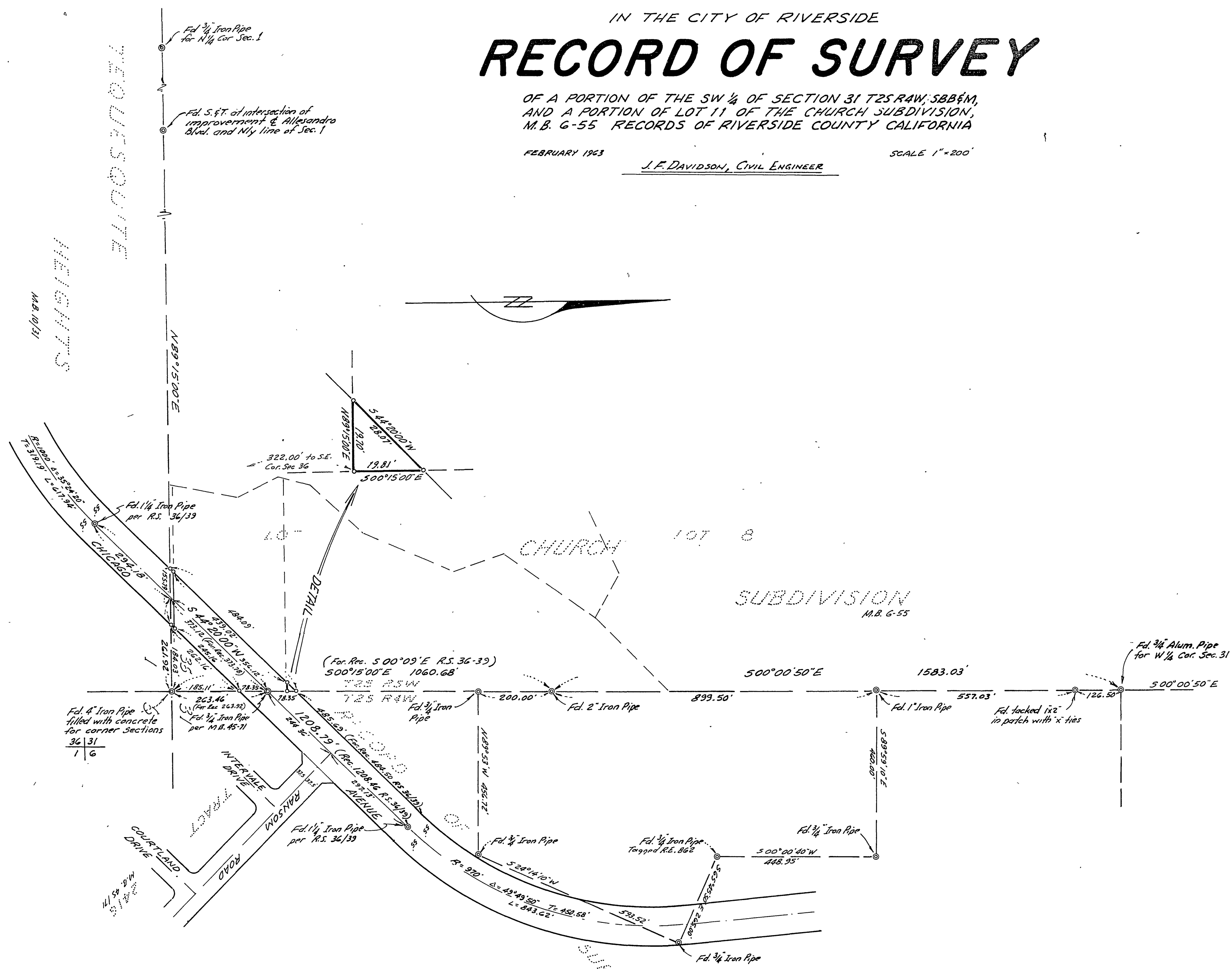
SCALE 1" = 200'

Filed for record at the request of County Surveyor
this 14th day of May, 1963
at 2:30 P.M. in Book 39 of Record of Survey at Page
67.

Fee \$ 5.⁰⁰ No. 10668

W.D. BALOGH County Recorder

By Thomas B. Vaughan Deputy



ENGINEER'S CERTIFICATE

This map correctly represents a survey made by me or under my direction in conformance with the requirements of Chapter 15 of Division 3 of the Business and Professions Code at the request of J.F. Davidson 17 January, 1963.

George E. McCarty
Registered Civil Engineer No. 10688

ENGINEER'S NOTE

- Bearings are based on the North line of Section 1, T3S R5W which bears N89°15'E as shown on map of TEQUESQUITE HEIGHTS, M.B. 10-31, Records of Riverside County California.
- Set 1/4 I.P. at all points shown thus \circ unless otherwise noted. Tagged RE. 862.
- The purpose of this survey is to show a correction in the bearing of the W 1/4 line of the SW 1/4 of Section 31 from that as shown by Record of Survey 36-39.

COUNTY SURVEYOR'S CERTIFICATE

This map has been examined for conformance with the requirements of Chapter 15 of Division 3 of the Business and Professions Code this 13th day of May, 1963.

A.C. KEITH County Surveyor

By G. T. Worsley Deputy