

IN THE COUNTY OF RIVERSIDE

RECORD OF SURVEY

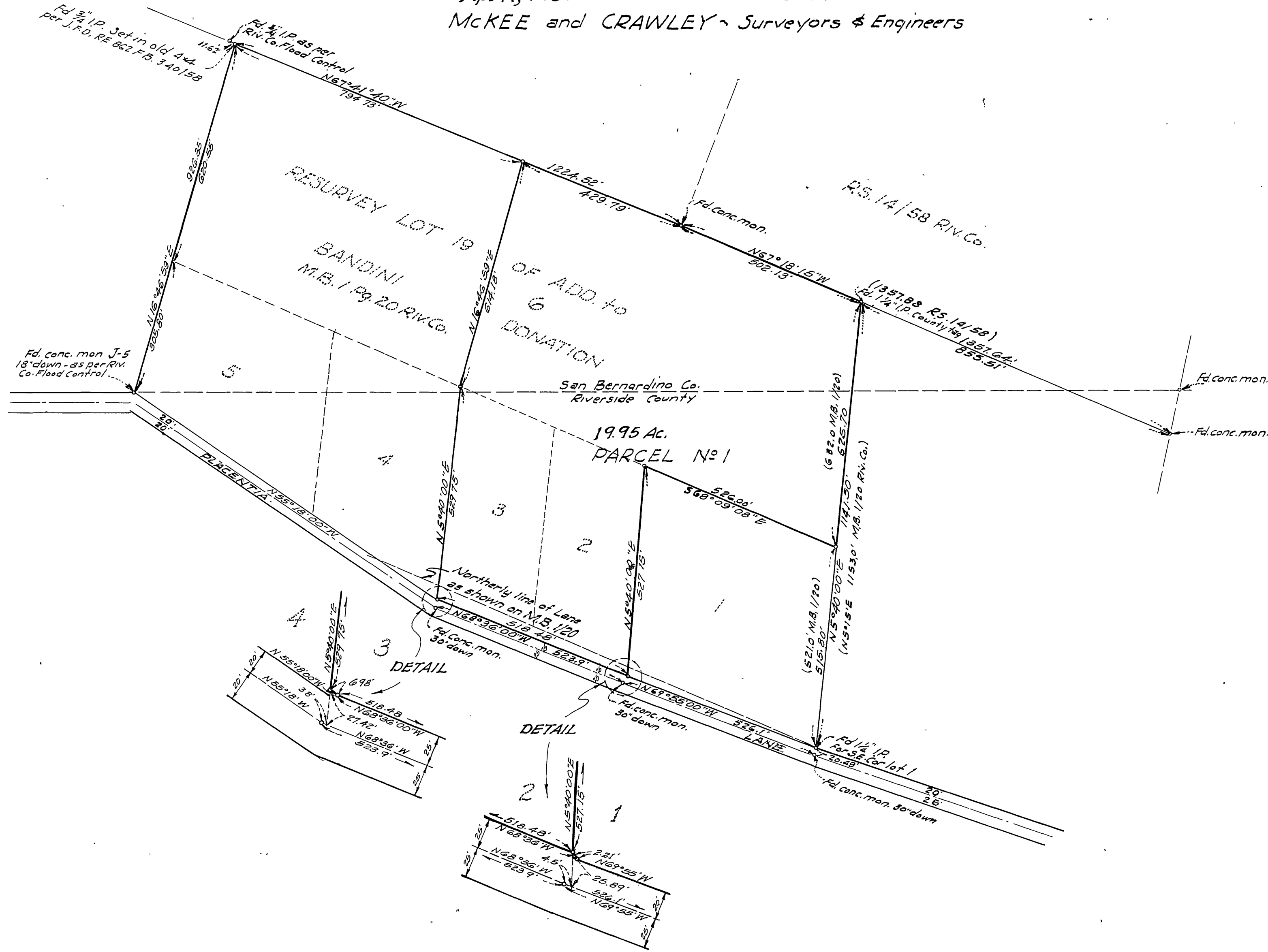
of lots 2 and 3 and a portion of lot 6 in the Subdivision of Lot 19 of the addition to Bandini Donation as shown by Map Recorded in Book 1 Page 20 of Maps Records of Riverside County, Calif. and in Book 17 Page 53 of Maps, Records of San Bernardino County, Calif.

Located in T.25 R.4W. JURUPA RANCHO
April, 1963 Scale 1in=200ft.
McKEE and CRAWLEY - Surveyors & Engineers

Filed for the record at the request of County Surveyor this 16 day of May, 1963 at 2:20 P.M. in Book 39 of Record of Survey at Page 68.

Fee \$5.00 No. 50012
WILLIAM D. BALOGH County Recorder

By Arum B. Vaughn Deputy



SURVEYOR'S CERTIFICATE
This map correctly represents a survey made by me or under my direction in conformance with the requirements of Chapter 15 of Division 3 of the Business and Professions Code at the request of Jack Critchlow in Jan, 1963.
George O. Crawley
R.E. 9455

NOTES:
Bearings are based on the center line of PLACENTIA LANE shown as N69°55'W on Riverside County Plat G-11.
3/4 Iron pipe tagged R.E. 9455 set at all corners shown thus unless otherwise noted
Monuments found as noted

COUNTY SURVEYOR'S CERTIFICATE
This map has been examined for conformance with the requirements of Chapter 15 of Division 3 of the Business and Professions Code this 13th day of May, 1963.
A. C. KEITH County Surveyor
By George O. Crawley Deputy