

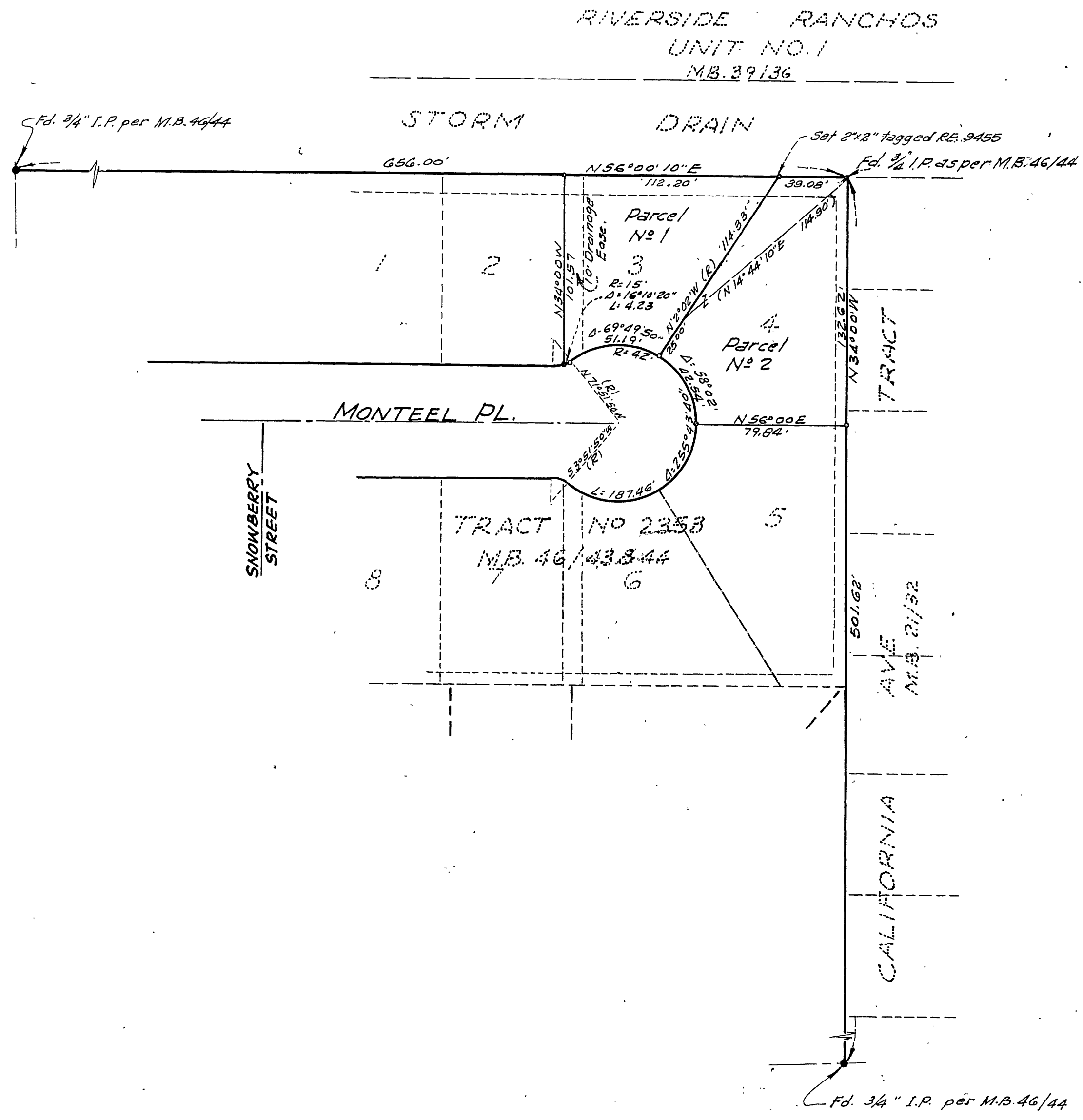
# IN THE CITY OF RIVERSIDE RECORD OF SURVEY

of Lots 3 & 4 of TRACT 2353 as shown by Map on file in Book 46 of Maps Pgs. 43 & 44 Records of Riverside County Calif.  
April 1963 Scale 1in=50ft.  
Mckee & Crowley Surveyors & Engineers

Filed for the record at the request of County Surveyor this 3 day of JUNE, 1963 at 4:45 PM. in Book 39 of Record of Survey at Page 73.

Fee \$5.00 No. 57410  
William D. Balogh, County Recorder

By Ramon B. Vaughn Deputy



### ENGINEER'S CERTIFICATE

This map correctly represents a survey made by me or under my direction in conformance with the requirements of Chapter 15 of Division 3 of the Business and Professions Code at the request of Tom Bordonaro in APRIL, 1963.

George O. Crowley  
Registered Civil Engineer No. 9455

### ENGINEER'S NOTE

Note: Bearings are based on the northeasterly line of TRACT 2353 shown as N 34° 00' E as per M.B. 46 pg. 44 Riverside County Records 2x2 Redwood Stakes tagged R.E. 9455 set at all corners shown thus unless otherwise noted.

### COUNTY SURVEYOR'S CERTIFICATE

This map has been examined for conformance with the requirements of Chapter 15 of Division 3 of the Business and Professions Code this 31st day of MAY, 1963.

A. C. KEITH County Surveyor

By A. T. Worsley Deputy

2170 8-30

R. B. Vaughn