

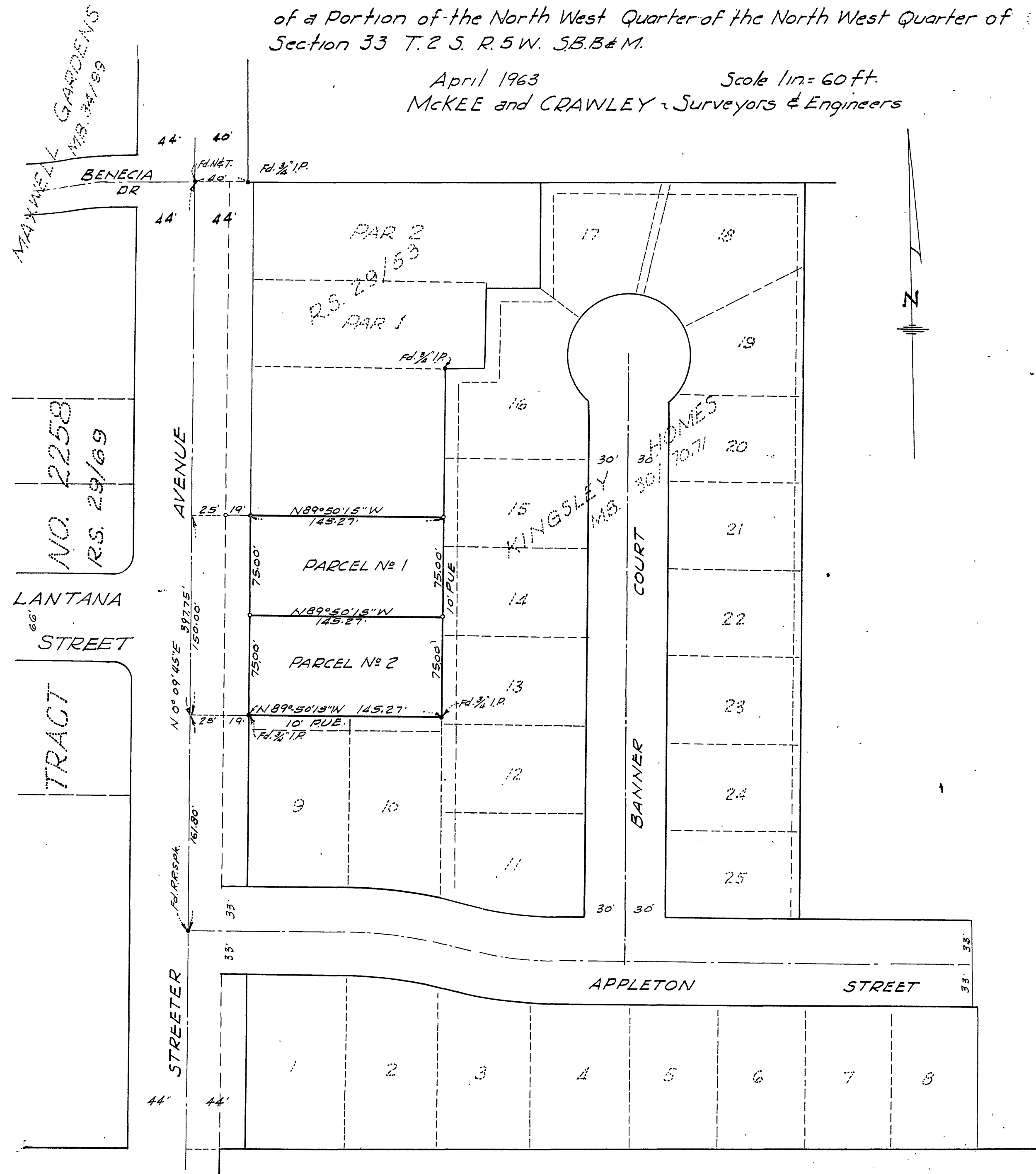
IN THE CITY OF RIVERSIDE

RECORD OF SURVEY

of a Portion of the North West Quarter of the North West Quarter of Section 33 T.2 S. R.5 W. 5B.B&M.

April 1963
McKEE and CRAWLEY Surveyors & Engineers

Scale 1in=60ft.



Filed for the record at the request of County Surveyor this 14 day of JUNE, 1963 at 3:45 P.M. in Book 39 of Record of Survey at Page 81

Fee \$ 5.00 No. 60111

WILLIAM D. BALOGH, County Recorder

By Harmon B. Vaughn Deputy

ENGINEER'S CERTIFICATE

This map correctly represents a survey made by me or under my direction in conformance with the requirements of Chapter 15 of Division 3 of the Business and Professions Code at the request of Leo R Woods in April, 1963.

George O. Crawley
Registered Civil Engineer No. 9455

ENGINEER'S NOTE

Note Bearings are based on the center line of STREETER AVE shown as $N 0^{\circ} 09' 45'' E$ on Map of KINGSLEY HOMES MB. 30/70.71 $\frac{3}{4}$ " Iron Pipe tagged RE.9455 set at all corners shown thus unless otherwise noted Monuments found as indicated

COUNTY SURVEYOR'S CERTIFICATE

This map has been examined for conformance with the requirements of Chapter 15 of Division 3 of the Business and Professions Code this 31st day of May, 1963.

A. C. KEITH County Surveyor

By G. T. Worsley Deputy

Retrieved