

IN THE CITY OF RIVERSIDE

# RECORD OF SURVEY

OF LOTS 7 AND 8 OF TRACT NO. 2109 PER MAP ON FILE IN BOOK 44 OF MAPS PAGES 27 & 28, RIVERSIDE COUNTY RECORDS. IN SECTION 36, T.2S., R.5W., S.B.B.#M.

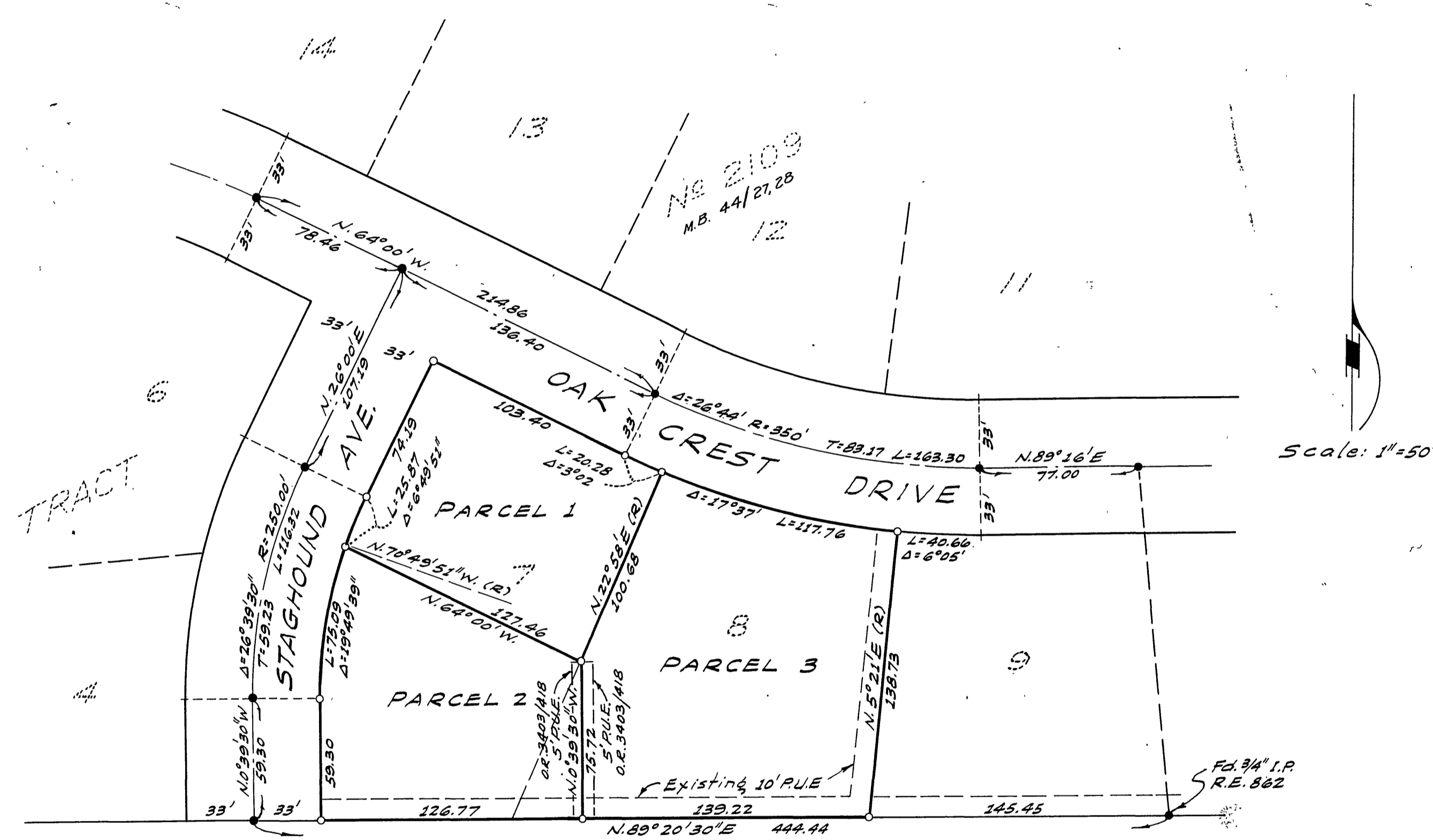
FEBRUARY 1963

SCALE: 1" = 50'

ALBERT A. WEBB ASSOCIATES  
CIVIL ENGINEERS

Filed for Record at request of County Surveyor this 14 day of JUNE, 1963 at 3:45 P.M. in Book 39 of Record of Survey at Page 84  
Fee \$ 5.00 No. 60149  
W.D. BALOGH County Recorder

By David B. Vaughan Deputy



SURVEYED AT THE REQUEST OF  
E. DAVID LONG COMPANY

Scale: 1" = 50'

### ENGINEER'S CERTIFICATE

This map correctly represents a survey made by me or under my direction in conformance with the requirements of Chapter 15 of Division 3 of the Business and Profession Code at the request of E. David Long Company in February 1963

Albert A. Webb  
Registered Civil Engineer No 9876

### ENGINEER'S NOTE:

Basis of Bearings is the centerline of Oak Crest Drive taken as N. 64°00' W. as same is shown by map of Tract No. 2109 on file in Book 44 of Maps, pages 27 & 28, Riverside County Records.

Found 3/4" I.P. tagged R.E. 9876 at all points shown thus •, unless otherwise noted.

Set 3/4" I.P. tagged R.E. 9876 at all points shown thus. 0

### COUNTY SURVEYOR'S CERTIFICATE

This map has been examined for conformance with the requirements of Chapter 15 of Division 3 of the Business and Profession Code this 14th day of JUNE, 1963

A.G. KEITH County Surveyor

By G. T. Worsley Deputy