

IN THE CITY OF RIVERSIDE

# RECORD OF SURVEY

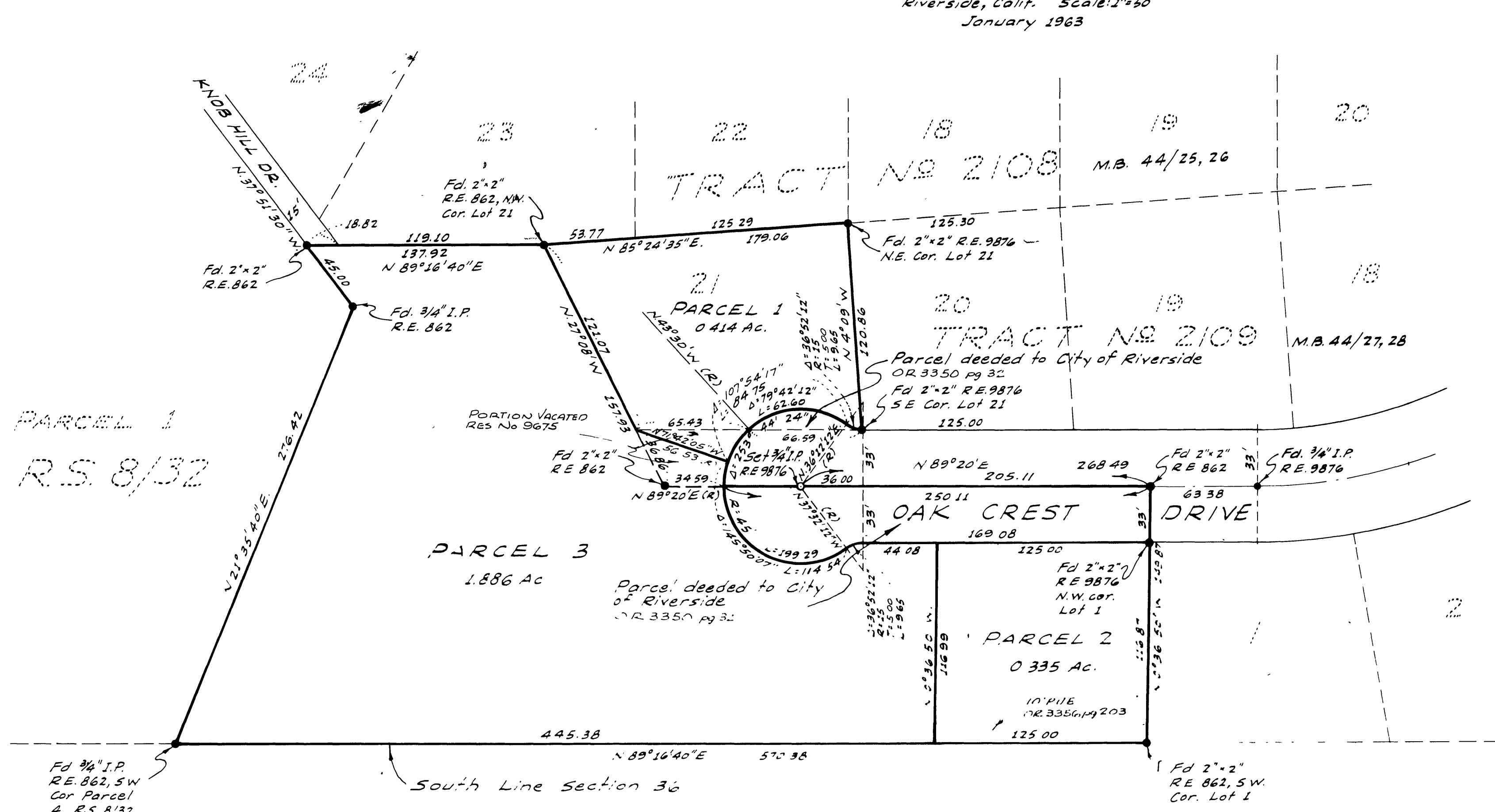
OF A PORTION OF TRACT NO. 2109 PER M.B 44, PAGES 27 & 28 RIVERSIDE COUNTY RECORDS AND A PORTION OF THE S1/2 OF THE SW1/4 OF THE SW1/4 OF SECTION 36, T.2S., R.5W., S.B.B. & M.

BY  
ALBERT A. WEBB ASSOCIATES  
CIVIL ENGINEERS  
Riverside, Calif. Scale: 1"=50'  
January 1963

Filed for Record at request of County Surveyor this 14 day of  
JAN. 1963 at 3:45 P.M. in Book 39  
of Record of Survey at Page 85  
Fee \$ 5.00 No.

W.D. BALOGH, County Recorder

By Carson B. Vaughan Deputy



Scale: 1"=50'

### ENGINEER'S CERTIFICATE

This map correctly represents a survey made by me or under my direction in conformance with the requirements of Chapter 15 of Division 3 of the Business and Professions Code at the request of Donato S. Stalder, Robert Stockton, and E. David Long Co in January 1963.

Donald M. Wehler  
Registered Civil Engineer No. 9876

### ENGINEER'S NOTE

1. Basis of Bearing is the South line of Section 36 taken as N 89° 16' 40" E per Tract No. 2109, M.B. 44/27, 28, Riverside County Records.
2. Found monuments as noted at all points shown thus • per Tract No. 2109, M.B. 44/27, 28.
3. Set 3/4" I.P. tagged R.E. 9876 at all lot corners unless otherwise noted.

### COUNTY SURVEYOR'S CERTIFICATE

This map has been examined for conformance with the requirements of Chapter 15 of Division 3 of the Business and Professions Code this 14th day of January 1963.

A.C. KEITH County Surveyor  
By A. T. W. [Signature] Deputy