

# IN THE CITY OF RIVERSIDE RECORD OF SURVEY

of a Portion of the N.W. 1/4 of the N.W. 1/4 of the N.W. 1/4 of Section 28 T. 2 S. R. 4 W. S. B. B. # 1.

MCKEE and CRAWLEY

Surveyors and Engineers

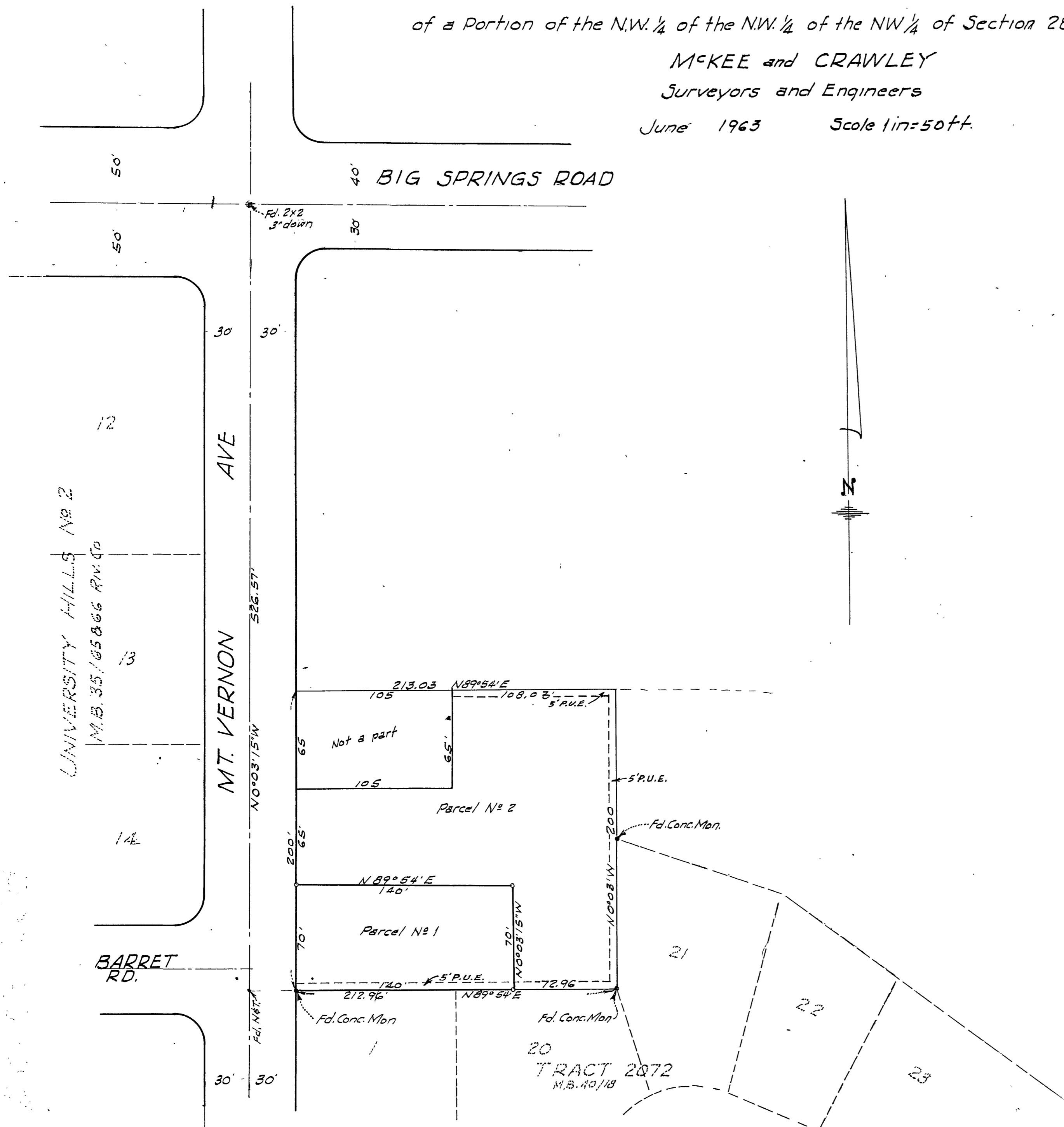
June 1963 Scale 1 in = 50 ft.

Filed for the record at the request of County Surveyor this 14 day of June, 1963 at 3:45 PM. in Book 39 of Record of Survey at Page 87.

Fee \$ 5.00 No. 62452

WILLIAM D. BALOGH County Recorder

By Roman B. Vaughn Deputy



### SURVEYOR'S CERTIFICATE

This map correctly represents a survey made by me or under my direction in conformance with the requirements of Chapter 15 of Division 3 of the Business and Professions Code at the request of Roman Warren in March, 1963.

George O. Crawley  
R.E. 9455

### NOTES:

Bearings are based on the center line of Mt. Vernon Ave. Shown as N 0° 03' 15" W in M.B. 40 pg. 18 Riv. Co. Records. 3/4" I.P. tagged R.E. 9455 set at corners shown thus. Monuments found as noted.

Note Parcel #2 does not represent a field survey, but outlines the property owned by Roman Warren as shown by County Records.

### COUNTY SURVEYOR'S CERTIFICATE

This map has been examined for conformance with the requirements of Chapter 15 of Division 3 of the Business and Professions Code this 13<sup>th</sup> day of June, 1963.

A. C. KEITH County Surveyor

By A. C. Keith Deputy