

IN THE CITY OF RIVERSIDE

RECORD OF SURVEY

OF A PORTION OF THE N1/2, NE 1/4, NE 1/4, SW 1/4, SECTION 32, T.2S., R.5W., S.B.B. & M

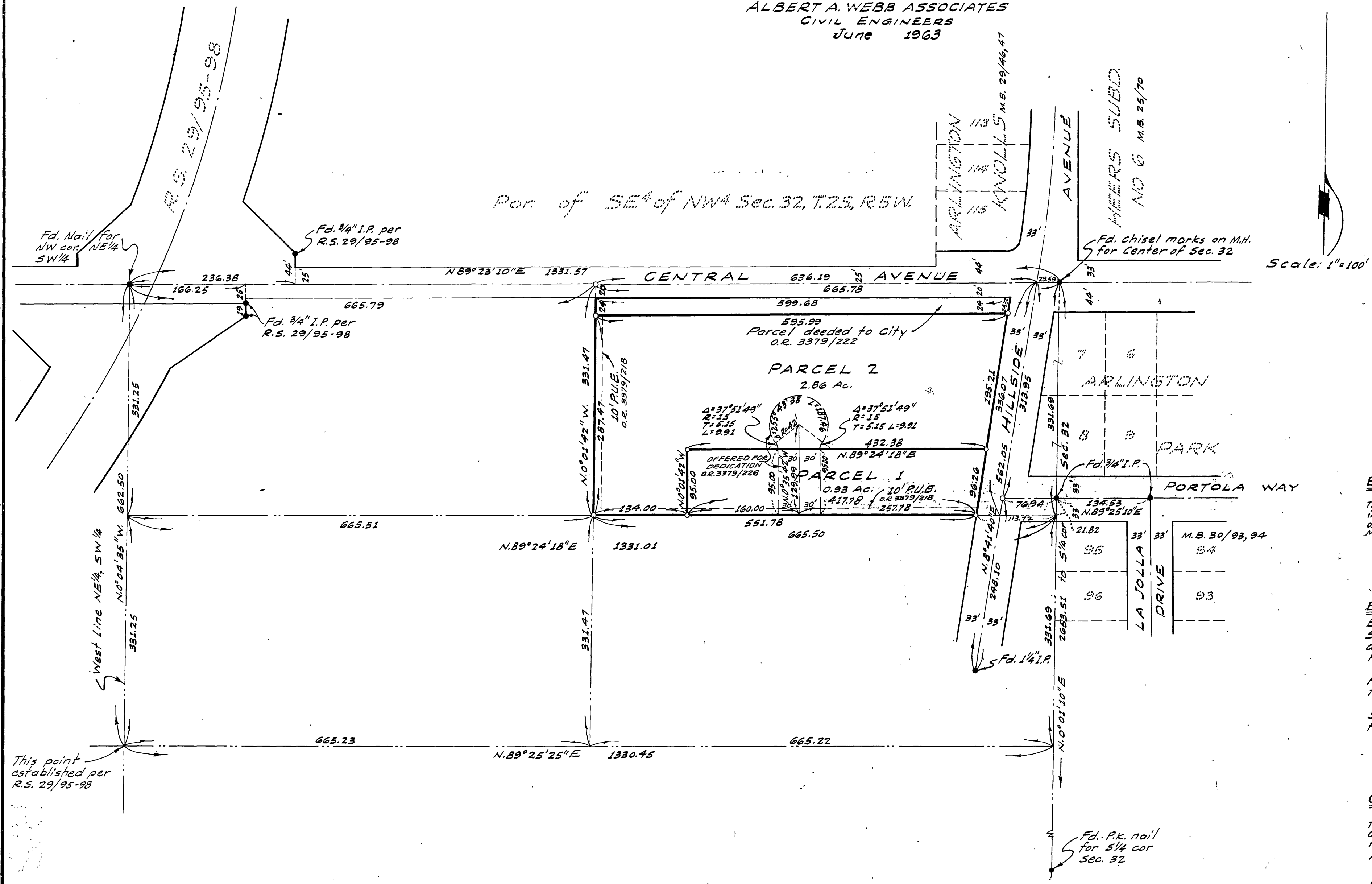
Filed for Record of request of County Surveyor this 5 day of July, 1963 at 2:25 P.M. in Book 39 of Record of Survey at Page 98
Fee \$ 5.00 No. 70150

W.D. BALOGH County Recorder

By Arum B. Vaughn Deputy

~BY~
ALBERT A. WEBB ASSOCIATES
CIVIL ENGINEERS
June 1963

Por of SE⁴ of NW⁴ Sec. 32, T.2S, R.5W



ENGINEER'S CERTIFICATE

This map correctly represents a survey made by me or under my direction in conformance with the requirements of Chapter 15 of Division 3 of the Business and Profession Code at the request of Mrs. Pauline C. Martin in December 1962

Ernest N. Webb
Registered Civil Engineer No 9876

ENGINEER'S NOTE:

Basis of Bearings is the North line of the SW 1/4 of Section 32, T.2S, R.5W, S.B.B. & M, taken as N89°23'10"E as same is shown by map on file in Book 29 of Records of Survey page 95-98, Riverside Co. Records.

Found monuments as noted at all points shown thus •

set 3/4" I.P. tagged R.E. 9876 at all points shown thus o unless otherwise noted.

COUNTY SURVEYOR'S CERTIFICATE

This map has been examined for conformance with the requirements of Chapter 15 of Division 3 of the Business and Profession Code this 15 day of July 1963
A.G. KEITH County Surveyor

By C. T. Wansley Deputy