

IN THE CITY OF RIVERSIDE

RECORD OF SURVEY

OF A PORTION OF THE N. E. 1/4 OF SECTION 20, T. 2 S. R. 4 W., S. B. B. AND M.

JUNE 1963

J. F. DAVIDSON, C. E.

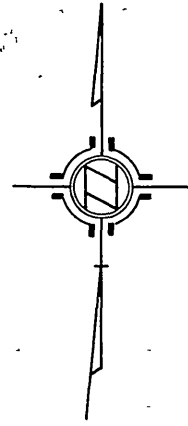
SCALE 1" = 50'

Filed for record at the request of County Surveyor this 5 day of July, 1963 at 1:15 P.M. in Book 39 of Record of Survey of Page 100

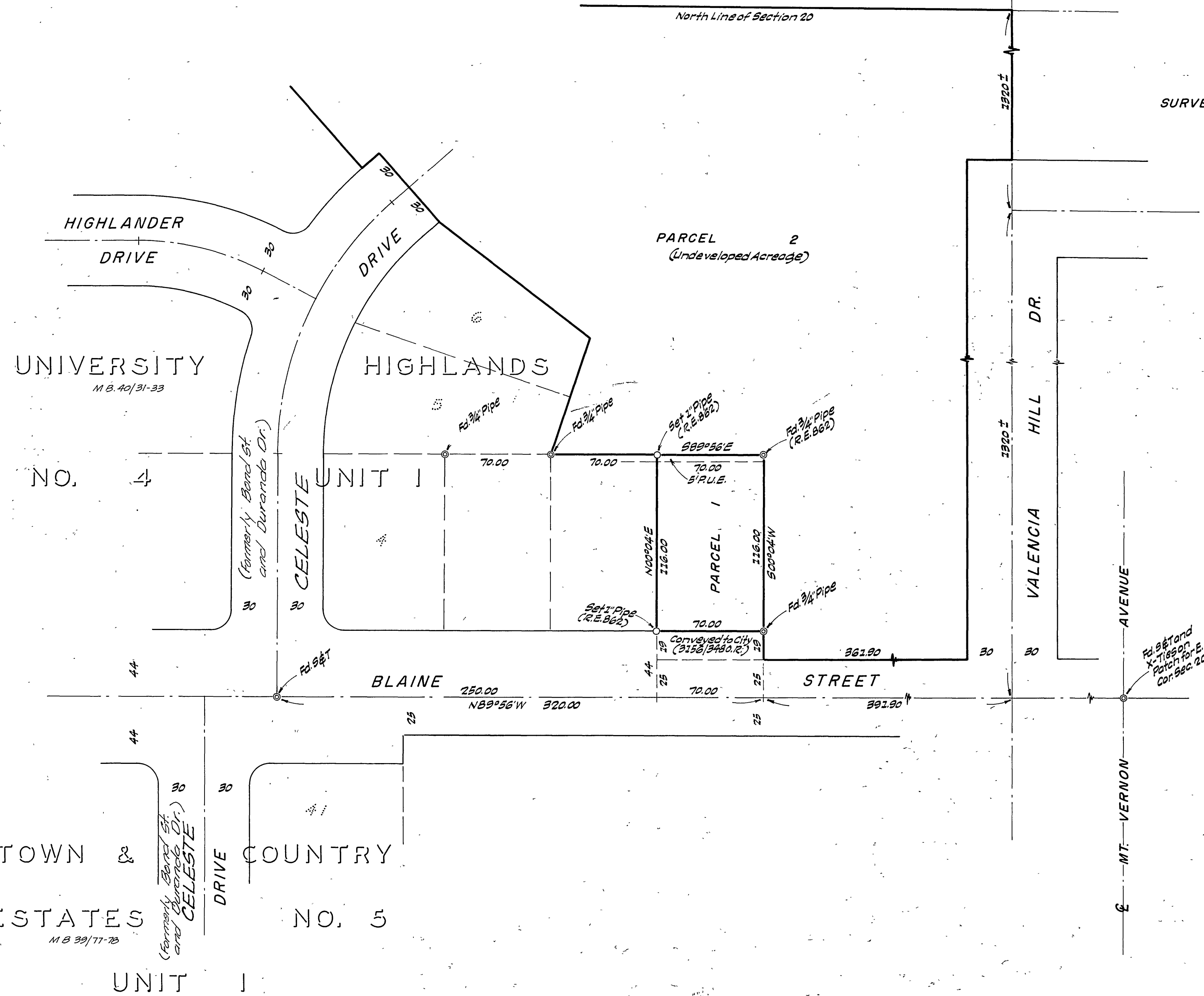
Fee \$ 5.00 No. 70177

W. D. BALDWIN County Recorder

By Arson B. Vaughan Deputy



SURVEYED AT REQUEST OF PHILIP PARK DEVELOPMENT CO.



ENGINEER'S CERTIFICATE

This map correctly represents a survey made by me or under my direction in conformance with the requirements of Chapter 15 of Division 3 of the Business and Professions Code at the request of PHILIP PARK DEVEL. CO. in April, 1962.

James F. Davidson
Licensed Land Surveyor No. 2018.

ENGINEER'S NOTE

Bearings are based on the center line of BLAINE STREET, being N89°56'W, as shown on map of 'UNIVERSITY HIGHLANDS NO. 4 UNIT 1' Map Book 40, Pgs. 31 to 33, Rec. Riverside Co., Calif.

Parcel 2 is shown for general information only and does not constitute an actual boundary survey.

COUNTY SURVEYOR'S CERTIFICATE

This map has been examined for conformance with the requirements of Chapter 15 of Division 3 of the Business and Professions Code this 13 day of July, 1963.

A. C. KEITH County Surveyor

By C. T. Wavley Deputy