

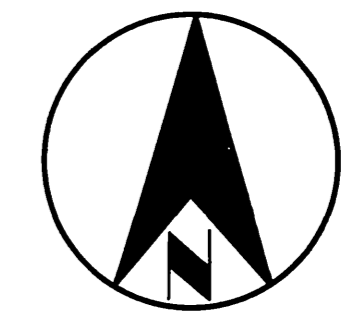
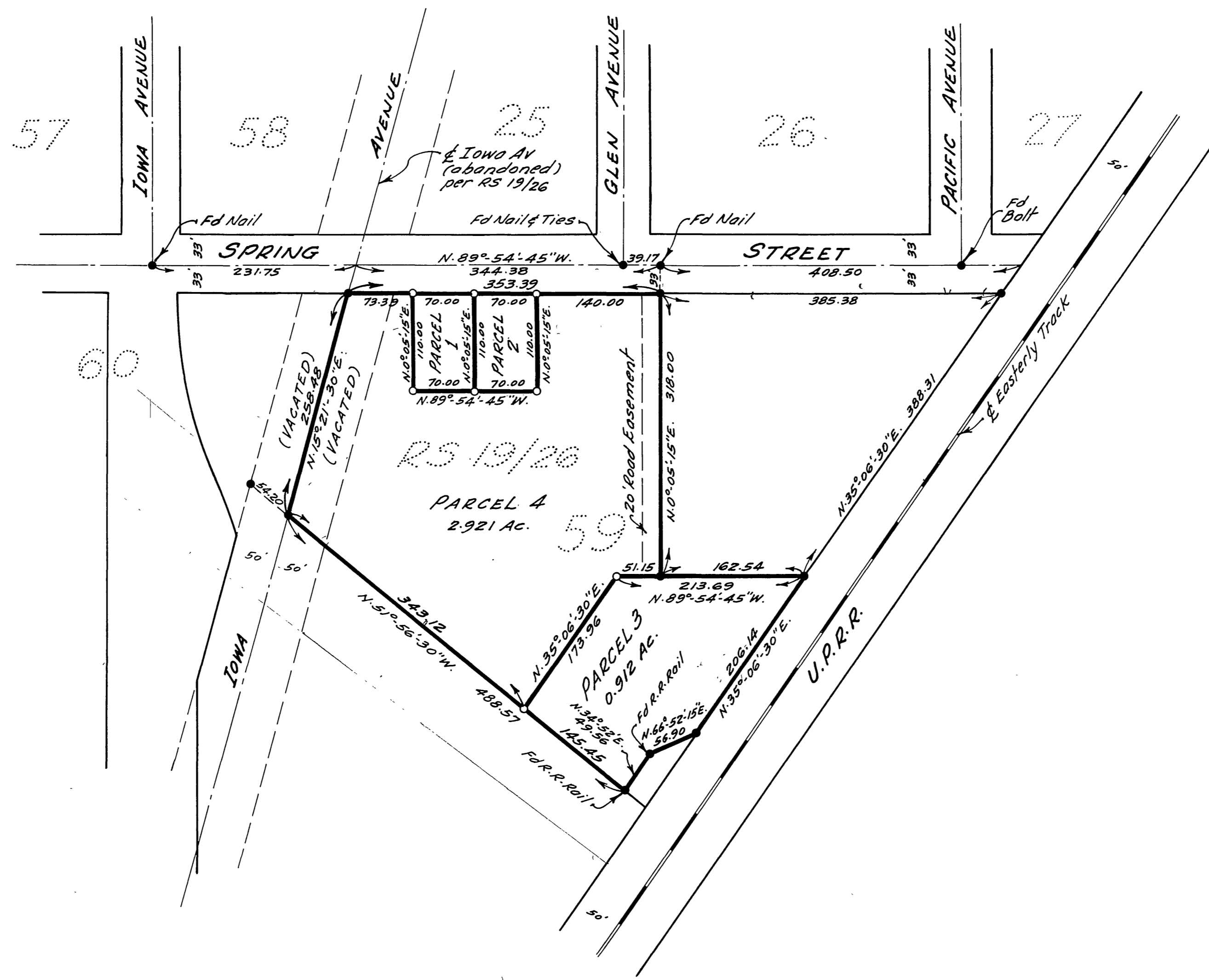
40/13
RS. 40/13

IN THE COUNTY OF RIVERSIDE

RECORD OF SURVEY

OF A PORTION OF BLOCK 59 AND A PORTION OF IOWA AVENUE
OF EAST RIVERSIDE AS PER MAP RECORDED IN BOOK 7 OF MAPS
AT PAGE 33 THEREOF, RECORDS OF SAN BERNARDINO COUNTY

Filed for Record at request of County Surveyor this 18 day of
July, 1963, at 11:30 A.M. in Book 40
of Record of Survey at Page 13
Fee \$ 5.00 No. 73112
W.D. BALOGH County Recorder
By Quinn B. Vaughan Deputy



Scale: - 1"=100'
BY
ALBERTA WEBB ASSOCIATES
CIVIL ENGINEERS
JUNE 1963

ENGINEER'S CERTIFICATE

This map correctly represents a survey made by me or under my direction in conformance with the requirements of Chapter 15 of Division 3 of the Business and Profession Code at the request of G. R. SIMONS during June 1963.
Albert N. Wells
Registered Civil Engineer No 9876

ENGINEER'S NOTE:

Basis of Bearings is the centerline of Spring Street taken as N 89° 54' 45" W, as same is shown by map on file in Book 19 of Records of Survey, page 26 thereof; records of Riverside County, California

Found 3/4" Iron Pipe tagged RE 7702 at all points shown thus ● unless otherwise noted.

Set 3/4" Iron Pipe tagged RE 9876 at all points shown thus ○

COUNTY SURVEYOR'S CERTIFICATE

This map has been examined for conformance with the requirements of Chapter 15 of Division 3 of the Business and Profession Code this 12th day of July, 1963
A.G. KEITH County Surveyor
By E. T. Worsley Deputy

W.O. 63-170 488/45
RS40/13

RS. 40/13