

IN THE COUNTY OF RIVERSIDE

Filed for record at request of County Surveyor this 18 day of July 1963 at 12:35 P.M. in Book 40 of Record of Survey at Page 14

Fee \$ 5.00

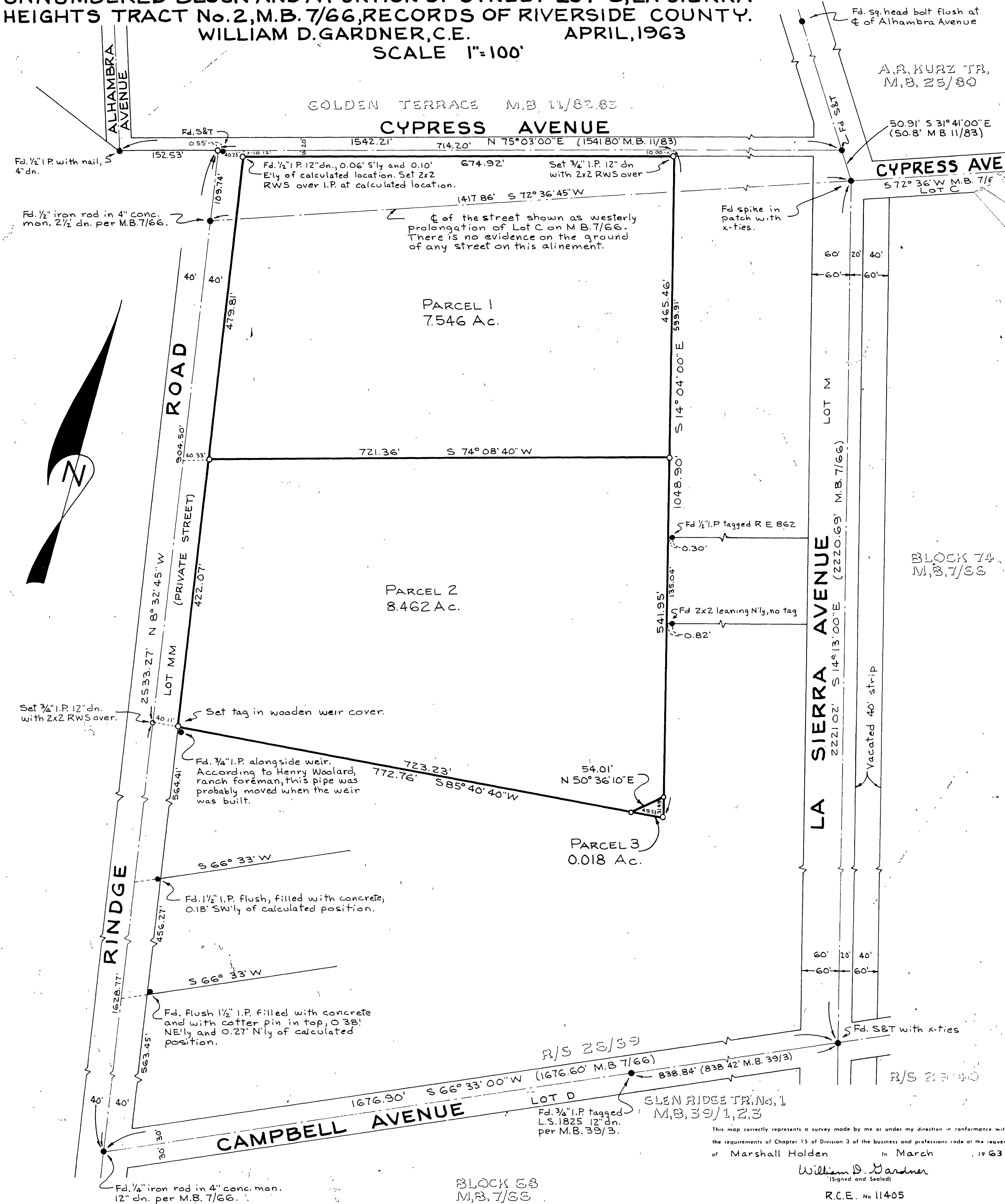
W.D. BALOGH  
County Recorder

By Aaron B. Vaigh  
Deputy

# RECORD OF SURVEY

OF A PORTION OF SECTION 3, T3S, R6W, AS SHOWN ON SUBDIVISION OF R. LA SIERRA, M.B. 6/70; ALSO BEING A PORTION OF AN UNNUMBERED BLOCK AND A PORTION OF STREET LOT C, LA SIERRA HEIGHTS TRACT No. 2, M.B. 7/66, RECORDS OF RIVERSIDE COUNTY.  
WILLIAM D. GARDNER, C.E. APRIL, 1963

SCALE 1"=100'



This map correctly represents a survey made by me or under my direction in conformance with the requirements of Chapter 15 of Division 3 of the Business and Professions Code at the request of Marshall Holden in March 1963

William D. Gardner  
(Signed and Sealed)  
R.C.E. No 11405

0 Set 3/4" I.P., except as noted. (Tagged R.C.E. 11405)  
• Monument found as noted.

Bearings are based on the ¶ of Lot D (Campbell Avenue) being S 66° 33' W, as shown on M.B. 7/66.

This map has been examined for conformance with the requirements of Chapter 15 of Division 3 of the Business and Professions Code this 12th day of July 1963

A.C. KEITH  
County Surveyor

G. T. Wouley  
Deputy

RS40/14