

SAVE RS 40/33

40/33

IN THE COUNTY OF RIVERSIDE

RECORD OF SURVEY

of the fractional Southwest Quarter of Section 18 T35R4W
SBB&M as per U.S. Gov't Survey

June 1963 Scale 1 in. = 300 ft.
McKEE and CRAWLEY Surveyors, Engr's.

Filed for record at request of County Surveyor this 29 day of July
1963 at 2:00 P.M. in Book 40 of Record of Survey at Page 33

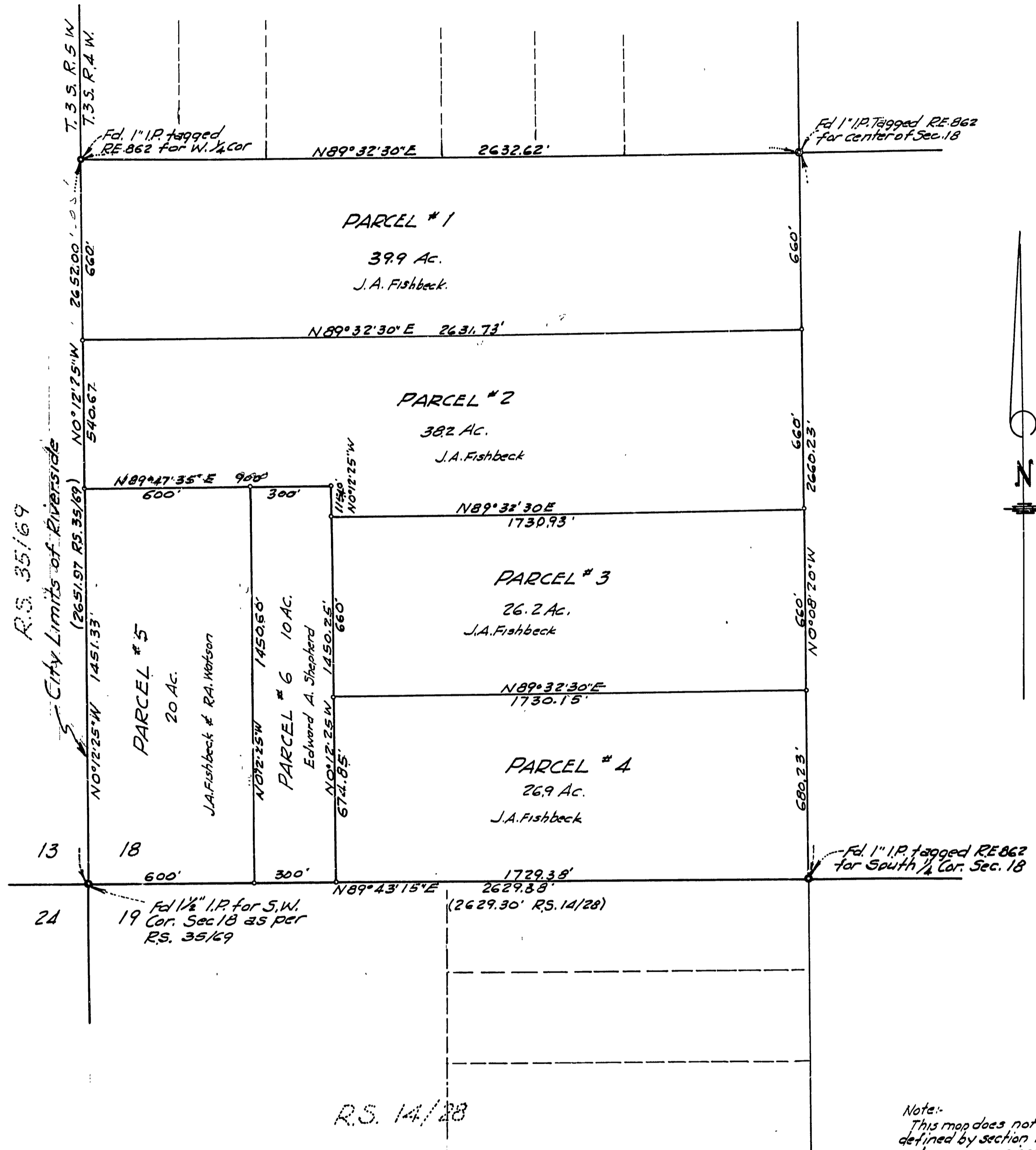
Fee \$ 5.00
No. 79249

William D. Balogh
County Recorder
By Raymond B. Vaughan
Deputy

RECEIVED

JUN 10 2003

DEPT. OF PUBLIC WORKS



Note:-
This map does not constitute a subdivision as defined by section 11535 of the business and professions code, since no single ownership has been divided into more than four parcels

Parcels 1 thru 4 J.A. Fishbeck
Parcel 5 J.A. Fishbeck and R.A. Watson
Parcel 6 Edward A. Shephard

This map correctly represents a survey made by me or under my direction in conformance with the requirements of Chapter 15 of Division 3 of the business and professions code at the request of Albert E. Fishbeck in June, 1963.
George O. Crawley
(Signed and Sealed)
No. RE.9455

Bearings are based on the southerly line of Section 18 T35R4W as per R.S. 14/28 shown as N89°43'15"E
1/4" I.P. set at all corners unless otherwise noted
Monuments found as noted.

This map has been examined for conformance with the requirements of Chapter 15 of Division 3 of the Business and Professions Code this 12th day of July, 1963.
A.C. KEITH
County Surveyor
Raymond B. Vaughan
Deputy

SAVE RS 40/33