

IN THE CITY OF RIVERSIDE RECORD OF SURVEY

BEING A PORTION OF THE EAST 175' OF THE SW 1/4 OF THE SW 1/4 OF THE NW 1/4 OF SECTION 20, T.2S. R.4W. S.B. & M., COUNTY OF RIVERSIDE, STATE OF CALIFORNIA

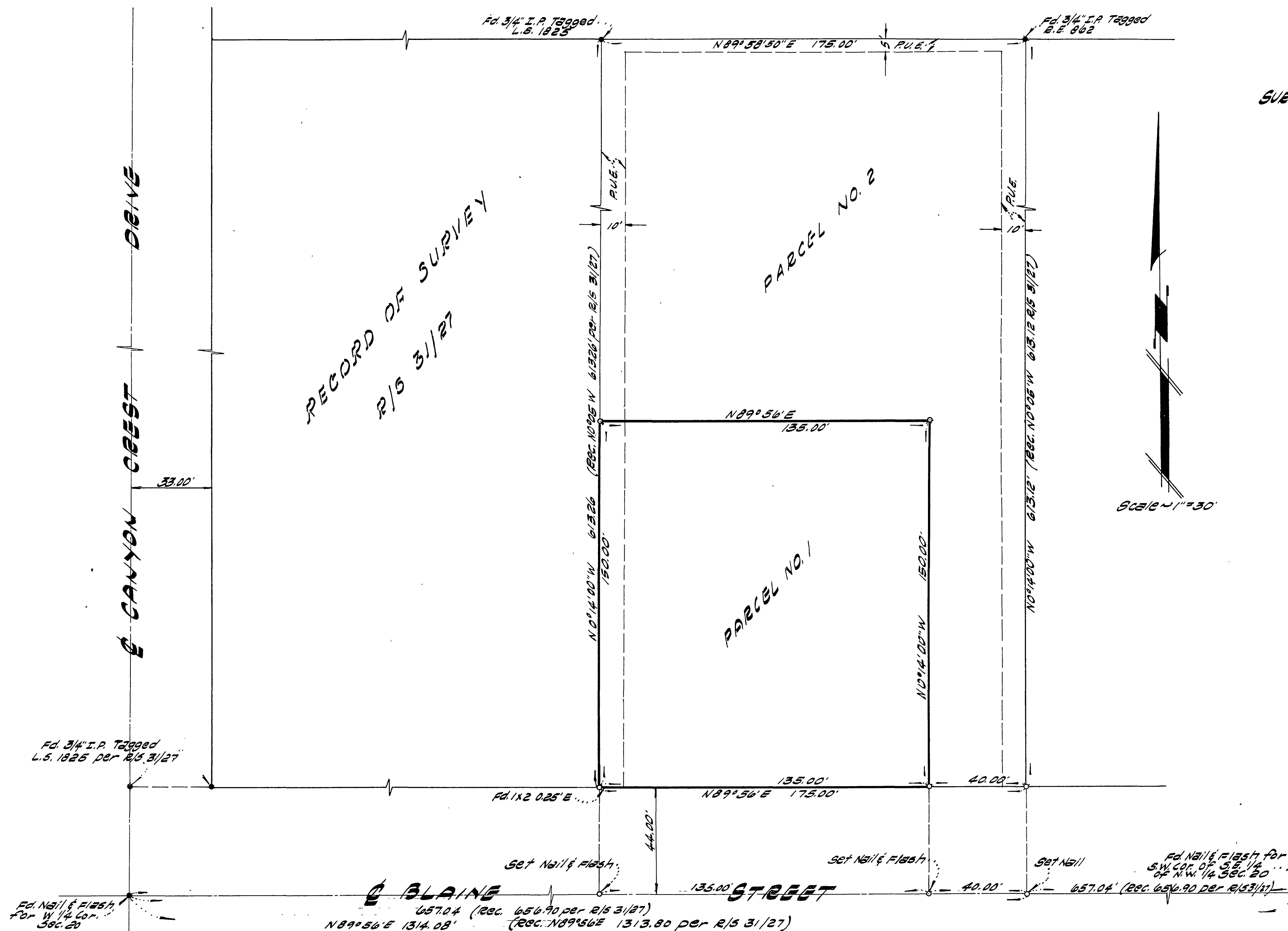
NESTE & BRUDIN CIVIL ENGINEERS
157 W. FIFTH STREET
SAN BERNARDINO, CALIFORNIA

JUNE, 1963

Filed for the record at the request of County Surveyor this 16 day of August, 1963 at 10:45 AM. in Book 40 of Record of Survey at Page 48.

Fee \$ 5.00 No. _____
W.A. BALOGH, County Recorder

By Caron B. Vaughan Deputy



SUBVEYED AT THE REQUEST OF
MR. H. E. ROWLEY
393 CYPRESS ST.
COLTON, CALIFORNIA

ENGINEER'S CERTIFICATE

This map correctly represents a survey made by me or under my direction in conformance with the requirements of Chapter 15 of Division 3 of the Business and Professions Code at the request of MR. H. E. ROWLEY in JUNE, 1963.

Norman A. Justic
Registered Civil Engineer No. 8613

ENGINEER'S NOTE

1. Basis of Bearing being the Center Line of Blaine Street, per Record of Survey recorded in Book 3, Page 27, Records of Riverside County, being N 89° 56' E.
2. • Indicates monuments found as shown.
3. • Indicates monuments set (1" Iron pipe tagged Rec. 8613) unless otherwise shown.
4. P.U.E. Indicates Public Utility Easement.

COUNTY SURVEYOR'S CERTIFICATE

This map has been examined for conformance with the requirements of Chapter 15 of Division 3 of the Business and Professions Code this 15th day of August, 1963.

A. C. KEITH County Surveyor

By A. C. Keith