

IN THE CITY OF RIVERSIDE

RECORD OF SURVEY

OF A PORTION OF LOT 16, BLOCK 20 OF W.T. SAYWARD AND S.C. EVANS LANDS, MAP BOOK 3, PAGE 2, RECORDS OF SAN BERNARDINO COUNTY, CALIFORNIA. LOCATED IN T. 35., R. 5 W., S. 6. B. & N. JULY 1963

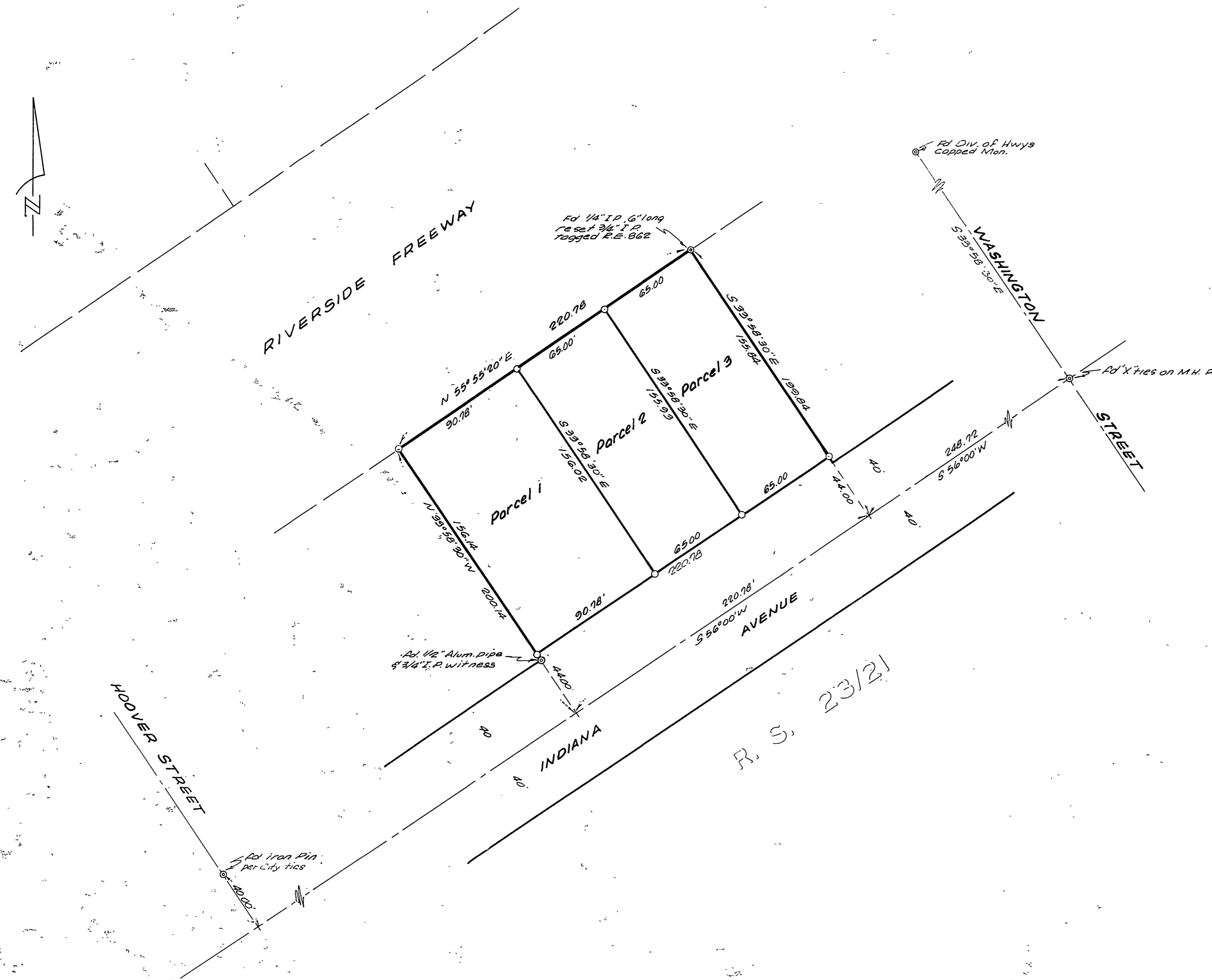
J. F. DAVIDSON, C. E.

SCALE 1" = 50'

Filed for record at the request of County Surveyor this 16 day of August, 1963 at 11:30 A.M. in Book 40 of Record of Survey at Page 53.

Fee \$5.00 No. _____
W.D. BALOGH County Recorder

By Caron B. Vaughan Deputy



Made at the request of FRED E. RAY

ENGINEER'S CERTIFICATE

This map correctly represents a survey made by me or under my direction in conformance with the requirements of Chapter 15 of Division 3 of the Business and Professions Code at the request of Fred E. Ray in June, 1963.

George E. McSant
Registered Civil Engineer No. 10665

ENGINEER'S NOTE

Bearings are based on the centerline of Indiana Ave, being N 56° 00' E, as shown on Record of Survey 23/61, Records of Riverside County, California.

o indicates 3/4" Iron Pipe, tagged R.E. 862, set.

COUNTY SURVEYOR'S CERTIFICATE

This map has been examined for conformance with the requirements of Chapter 15 of Division 3 of the Business and Professions Code this 15th day of August, 1963.

A.C. KEITH County Surveyor

By A.C. Keith