

In the City of Riverside
RECORD OF SURVEY

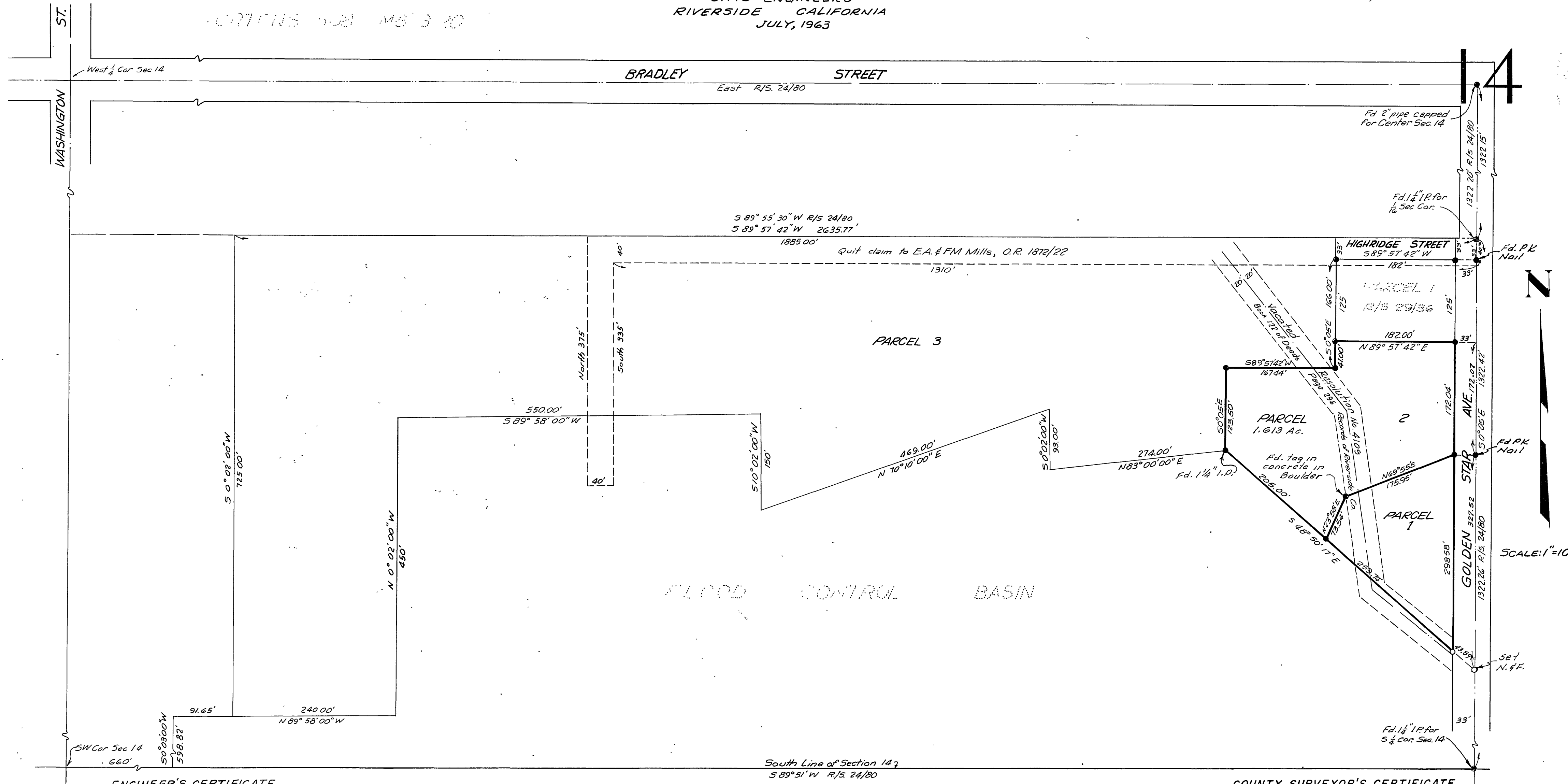
Of a Portion of the Southwest $\frac{1}{4}$ of Section 14, T 3 S, R 5 W, S. B. B. & M.

ALBERT A. WEBB ASSOCIATES
 CIVIL ENGINEERS
 RIVERSIDE CALIFORNIA
 JULY, 1963

Filed for Record at request of County Surveyor this 16 day of August, 1963 at 11:30 AM in Book 40 of Record of Survey at Page 56

Fee \$ 5.00 No. _____
 W.D. BALOGH County Recorder

By Aaron B. Vaughn Deputy



ENGINEER'S CERTIFICATE

This map correctly represents a survey made by me or under my direction in conformance with the requirements of Chapter 15 of Division 3 of the Business and Profession Code at the request of F. MARGARET MILLS. in July 1963.
Albert A. Webb
 Registered Civil Engineer No. 9876

ENGINEER'S NOTE:

Basis of Bearings is the centerline of Golden Star Ave. shown on R/S. 24/80 to be 50° 05' E.
 Parcel 3 as shown was not surveyed and the bearings and distances were taken from maps or deeds of record.
 Found 2x2" stakes tagged RE 4210 at all points shown thus • unless otherwise noted.
 Set 3/4" I.P. tagged R.E. 9876 at all points shown thus o unless otherwise noted.

COUNTY SURVEYOR'S CERTIFICATE

This map has been examined for conformance with the requirements of Chapter 15 of Division 3 of the Business and Profession Code this 15th day of August
 A.C. KEITH County Surveyor
 By A.C. Keith