

IN THE CITY OF RIVERSIDE

# RECORD OF SURVEY

LOTS 2, 3, AND 4 OF E.N. SMITH'S SUBDIVISION AS PER PLAT RECORDED IN BOOK 5 OF MAPS, PAGE 179, RECORDS OF RIVERSIDE COUNTY, CALIFORNIA, AND A PORTION OF LOTS 43 AND 46 OF OAKLEY'S SUBDIVISION AS PER PLAT RECORDED IN BOOK 5 OF MAPS PAGE 160, RECORDS OF RIVERSIDE COUNTY, CALIFORNIA.

IN RUBIDOUX RANCHO

NESTE AND BRUDIN - CIVIL ENGINEERS  
157 W. FIFTH STREET  
SAN BERNARDINO, CALIFORNIA

JUNE, 1963

Filed for the record at the request of County Surveyor this 23<sup>rd</sup> day of August, 1963 at 9:00 AM. in Book 40 of Record of Survey at Page 57.

Fee \$5.00 No. \_\_\_\_\_  
W.D. BALOGH County Recorder  
By Allen Sheldon Deputy

Fd. 2" I.P. in Well under  
3" A.C. M.D. CITY OF  
RIVERSIDE

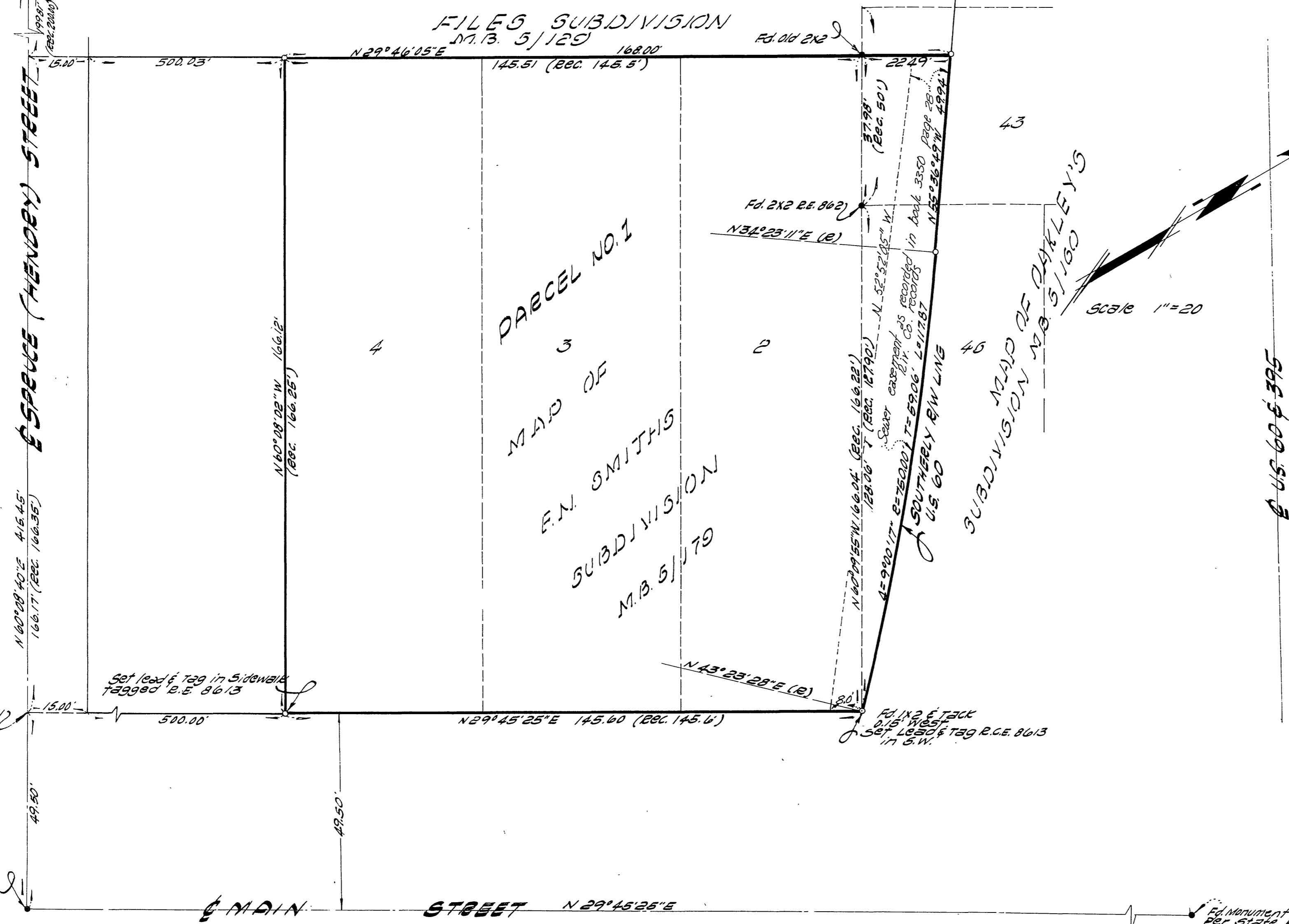
WILSHIRE (FAIRMOUNT) STREET

HENDERY STREET

SPRACE

Fd. Nail

Fd. Spike & Tin



SURVEYED AT REQUEST OF  
STANDARD OIL COMPANY OF CALIFORNIA  
WESTERN OPERATIONS INC.  
605 W. OLYMPIC BOULEVARD  
LOS ANGELES 15, CALIFORNIA

### ENGINEER'S CERTIFICATE

This map correctly represents a survey made by me or under my direction in conformance with the requirements of Chapter 15 of Division 3 of the Business and Professions Code at the request of STANDARD OIL COMPANY OF CALIFORNIA WESTERN OPERATIONS INC. IN JANUARY OF 1963

Norman A. Nester  
Registered Civil Engineer No. 8613

### ENGINEER'S NOTE

1. Basis of bearing being the center line of Main Street, per STATE HWY E/W MAP B/W-19 SHEET NO. 17. Bearing N 29° 45' 25" E
2. Indicates monuments found as shown.
3. Indicates monuments set (1" Iron Pipe Tagged R.E. 8613) unless otherwise shown.

### COUNTY SURVEYOR'S CERTIFICATE

This map has been examined for conformance with the requirements of Chapter 15 of Division 3 of the Business and Professions Code this 21<sup>st</sup> day of August, 1963.

A. C. KEITH County Surveyor  
By A. C. Keith