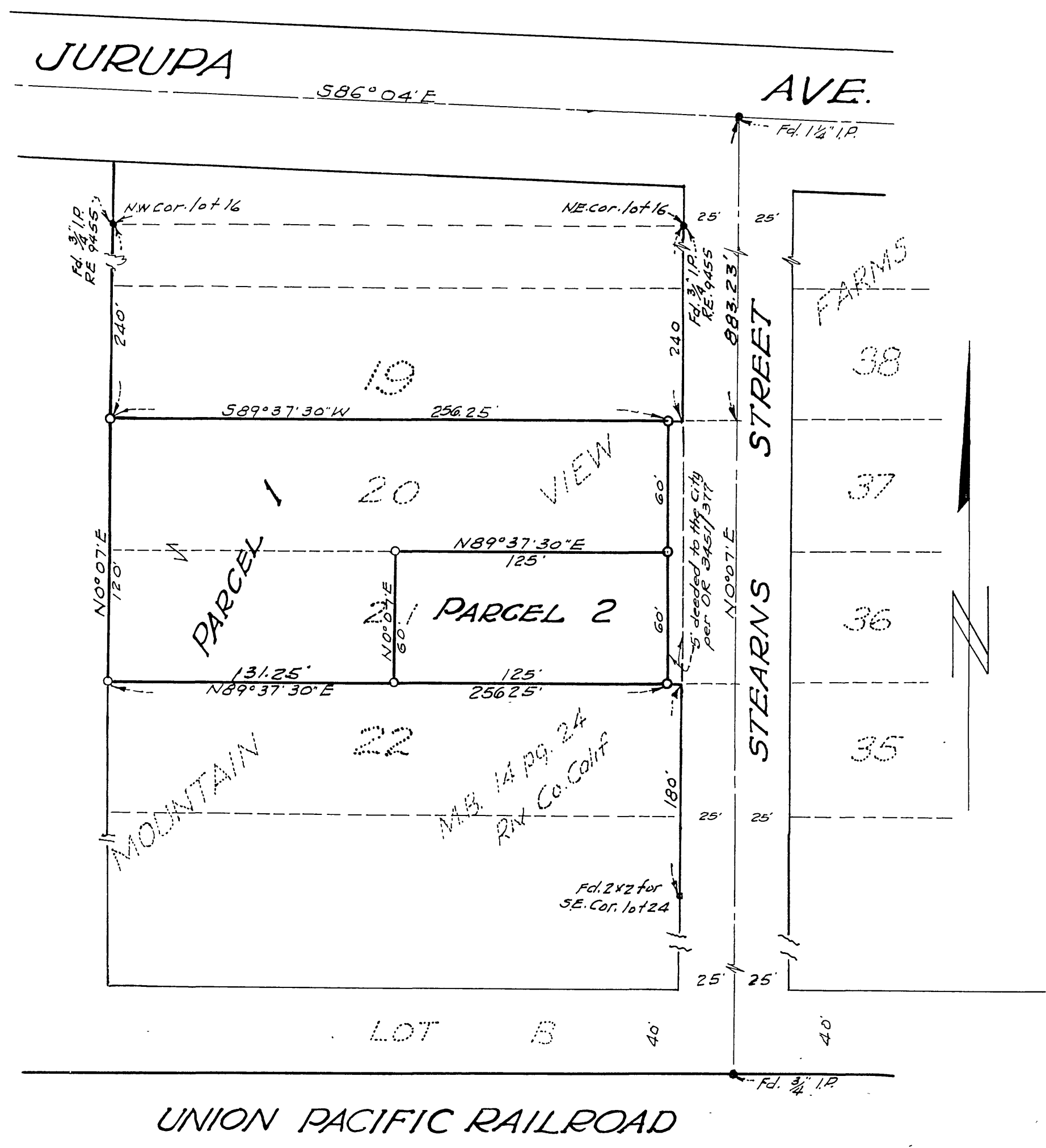


IN THE CITY OF RIVERSIDE
RECORD OF SURVEY
 OF LOTS 20 AND 21 OF MOUNTAIN VIEW FARMS
 AS SHOWN ON A MAP FILED IN BOOK 14, PAGE 24,
 OF MAPS, RECORDS OF RIVERSIDE COUNTY.
 IN SECTION 33, T2S, R5W

MAY, 1963 McKee and Crawley
 Engineers & Surveyors SCALE: 1"=50'
 Riverside, California

Filed for the record at the request of County Surveyor
 this 23rd day of August, 1963
 at 9:00 AM. in Book 40 of Record of Survey at Page
 58.
 Fee \$ 5⁰⁰ No. _____
 William D. Balogh County Recorder
 By Alene Stoddard Deputy



ENGINEER'S CERTIFICATE

This map correctly represents a survey made by me or under my direction in conformance with the requirements of Chapter 15 of Division 3 of the Business and Professions Code at the request of Wm T Oglesby in May, 1963.

George O. Crawley
 Registered Civil Engineer No. 9455

ENGINEER'S NOTE

Bearings are based on the center line of Stearns St. as per M.B. 14 Pg. 24 Riverside Co. Calif. shown as S 0° 07' E.
 o indicates 3/4" Iron Pipe set and tagged 'RE 9455'
 Monuments found as shown

COUNTY SURVEYOR'S CERTIFICATE

This map has been examined for conformance with the requirements of Chapter 15 of Division 3 of the Business and Professions Code this 21st day of August, 1963.

A. C. KEITH County Surveyor
 By A. C. Keith