

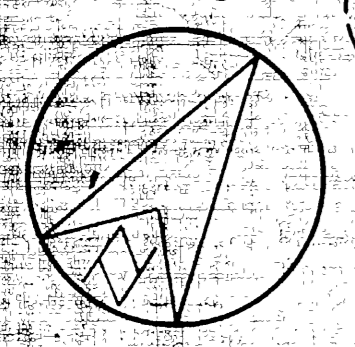
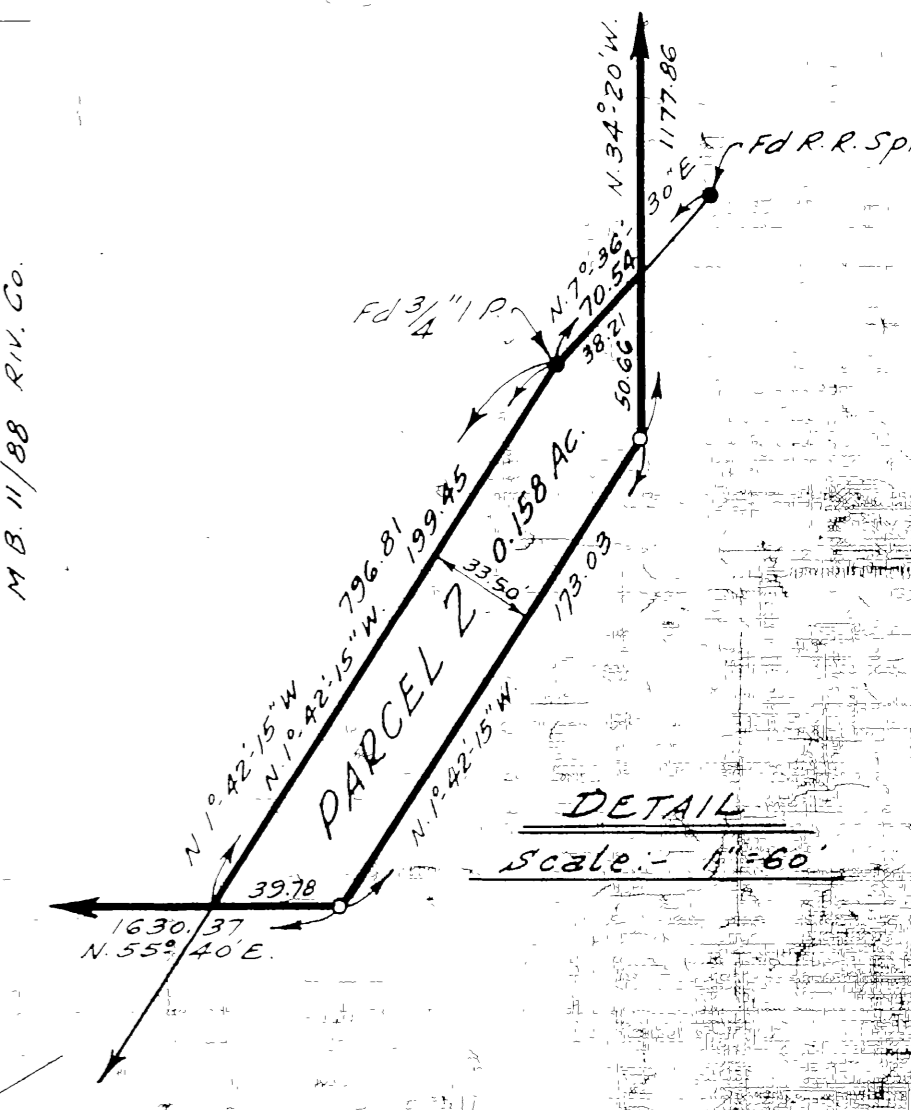
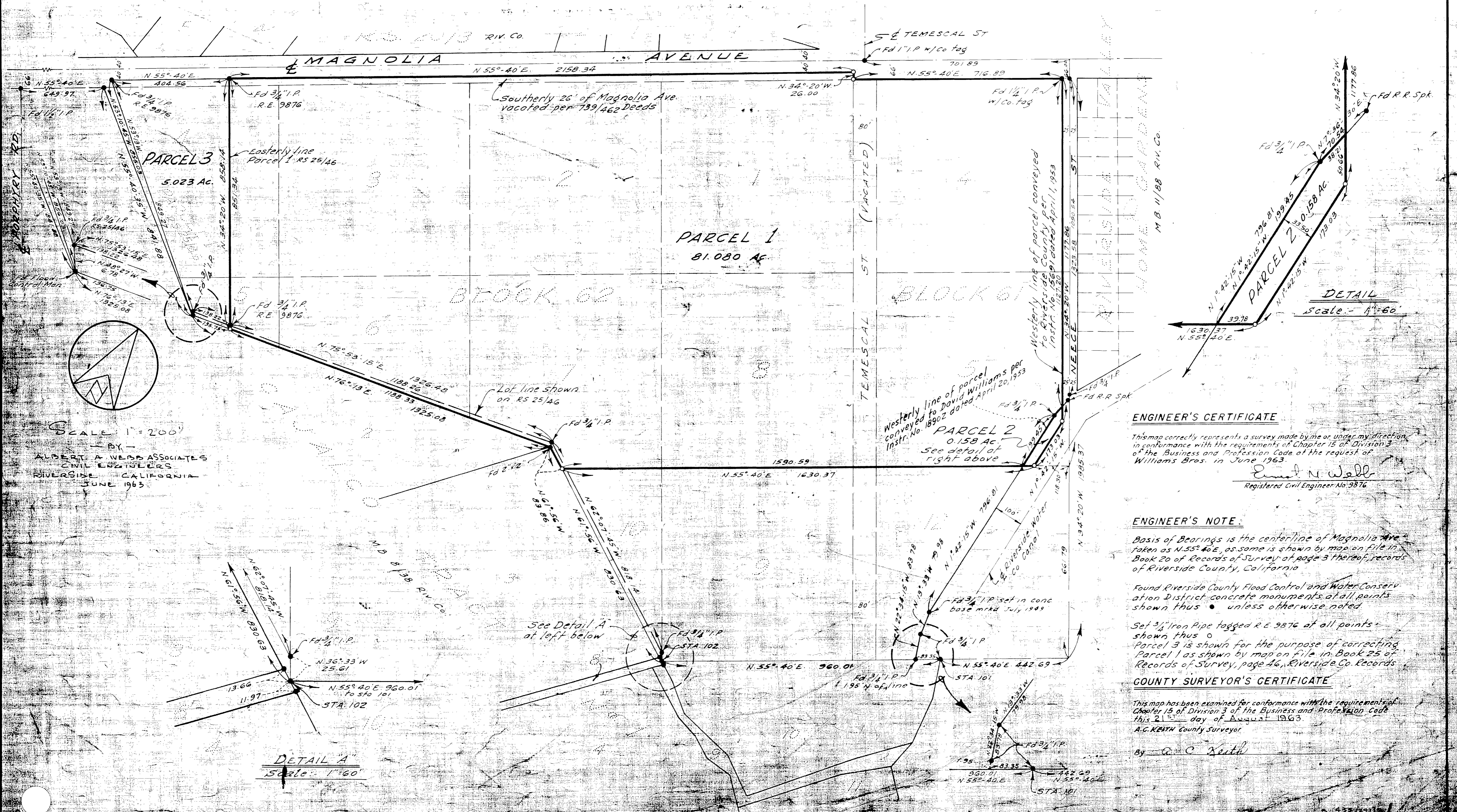
IN THE COUNTY OF RIVERSIDE

RECORD OF SURVEY

of Lots 1 thru 8 in Block 62, portions of Lots 4 and 5 in Block 61, portions of Temescal St (vacated) and Magnolia Ave. (vacated) of R.L. & I. Co. Lands recorded in Book 1 of Maps at page 70 thereof, Records of San Bernardino County, California in Rancho El Sobrante de San Jacinto

Filed for Record at request of County Surveyor this 23rd day of August, 1963 at 2:00 PM in Book 40 of Record of Survey at Page 59
Fee \$ 5⁰⁰ No. _____
W.D. BALOGH County Recorder
By Albert A. Wehr Deputy

RIS 40159



SCALE 1"=200'
BY
ALBERT A. WEHR ASSOCIATES
CIVIL ENGINEERS
RIVERSIDE CALIFORNIA
JUNE 1963

ENGINEER'S CERTIFICATE
 This map correctly represents a survey made by me or under my direction in conformance with the requirements of Chapter 15 of Division 3 of the Business and Profession Code at the request of Williams Bros. in June 1963.
Ernest N. Wall
 Registered Civil Engineer No. 9876

ENGINEER'S NOTE:
 Basis of Bearings is the centerline of Magnolia Ave. taken as N.55° 40' E, as same is shown by map on file in Book 20 of Records of Survey at page 3 thereof, records of Riverside County, California
 Found Riverside County Flood Control and Water Conservation District concrete monuments at all points shown thus • unless otherwise noted
 Set 3/4" Iron Pipe tagged R.E. 9876 at all points shown thus o
 Parcel 3 is shown for the purpose of correcting Parcel 1 as shown by map on file in Book 25 of Records of Survey, page 46, Riverside Co. Records

COUNTY SURVEYOR'S CERTIFICATE
 This map has been examined for conformance with the requirements of Chapter 15 of Division 3 of the Business and Profession Code this 21st day of August 1963.
 A.G. KEITH County Surveyor
 By A.G. Keith

DETAIL A
Scale: 1"=60'

RS 40159

RIS 40159