

IN THE COUNTY OF RIVERSIDE
RECORD OF SURVEY

of a Portion of the Southwest Quarter of Section 8 T.25. R.4.W. S.B.B.#M.

July 1963

Scale 1in=200ft.

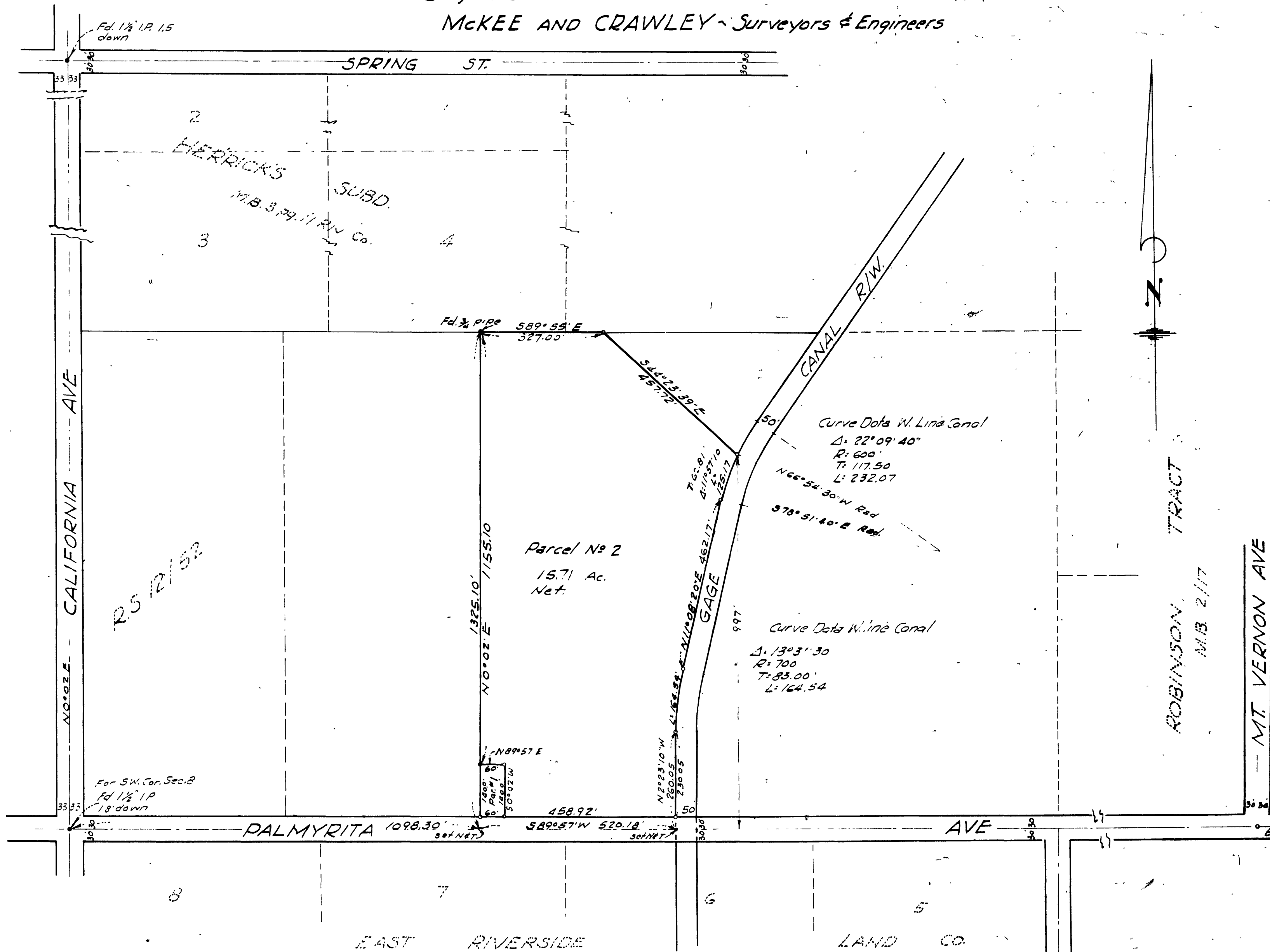
MCKEE AND CRAWLEY - Surveyors & Engineers

Filed for the record at the request of County Surveyor
 this 2 day of OCTOBER 1963
 at 2:15 P.M. in Book 40 of Record of Survey at Page 68

Fee \$ 5.00 No.

William O. Balogh County Recorder

By Lawrence B. Vaughn Deputy



ENGINEER'S CERTIFICATE

This map correctly represents a survey made by me or under my direction in conformance with the requirements of Chapter 15 of Division 3 of the Business and Professions Code at the request of O.K. Face in July 1963, 19

George O. Crawley
 Registered Civil Engineer No. 9455

ENGINEER'S NOTE

Bearings are based on the center line of Palmyrita Ave shown as S89°57'W on RS 12/52
 3/4" Iron pipe fagged R.E. 9455 set at corners unless otherwise noted
 Monuments found as noted.

Gage Canal right of way data was established in accordance with Gage Canal Company from the center line of the canal as it now exists.

COUNTY SURVEYOR'S CERTIFICATE

This map has been examined for conformance with the requirements of Chapter 15 of Division 3 of the Business and Professions Code this 30th day of September 1963

A. C. KEITH County Surveyor

By A. C. Keith

R.S. 40/68

PC 40/112