

40/73
R/S 40/73

IN THE COUNTY OF RIVERSIDE RECORD OF SURVEY

OF A PORTION OF LOT 84 OF EAST RIVERSIDE PER MAP BOOK 7, PAGE 33 RECORDS OF SAN BERNARDINO COUNTY, CALIF.

Filed for Record at request of County Surveyor this 3 day of
OCTOBER, 1963 at 2:30 P.M. in Book 40
of Record of Survey of Page 73
Fee \$ 5.00 No.

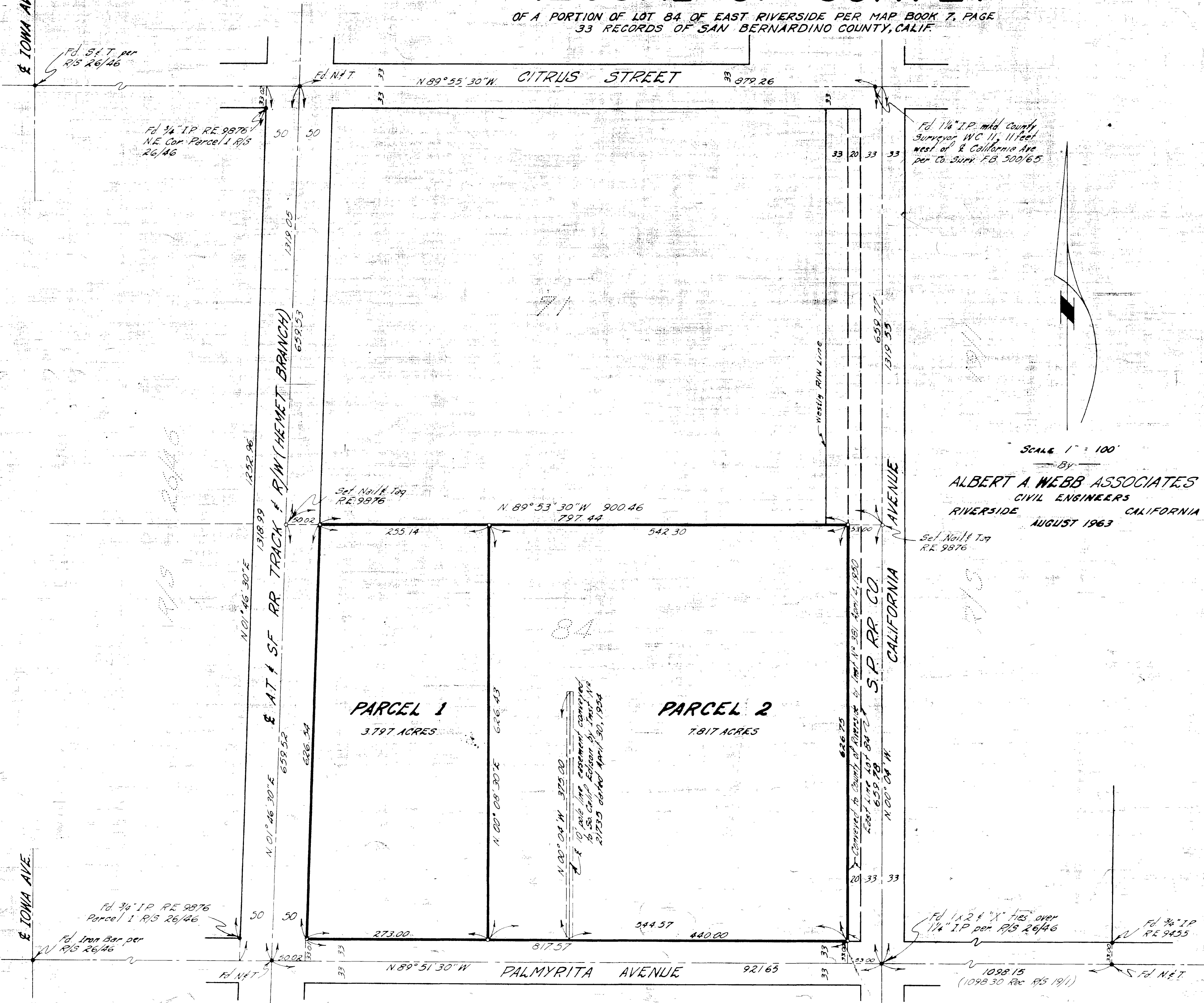
W.D. BALOGH County Recorder
By Clara B. Vaughan Deputy

& IOWA AVE.

Fd. 5/4" I.P. per R/S 26/46

Fd. 3/4" I.P. RE 9876
N.E. Cor. Parcel 1 R/S
26/46

Fd. 1 1/4" I.P. mid. County
Surveyor WC 11, 11 feet
west of & California Ave
per Co. Surv. F.B. 500/65



SCALE 1" = 100'

By
ALBERT A. WEBB ASSOCIATES
CIVIL ENGINEERS
RIVERSIDE CALIFORNIA
AUGUST 1963

ENGINEER'S CERTIFICATE

This map correctly represents a survey made by me or under my direction in conformance with the requirements of Chapter 15 of Division 3 of the Business and Profession Code at the request of General Steel & Wire Co. in August 1963.
Ernest N. Webb
Registered Civil Engineer No 9876

ENGINEER'S NOTE:

Basis of Bearings is the centerline of Palmyrita Avenue later as N 89° 51' 30" W as shown by Record of Survey on file in Book 26 of Records of Survey at page 46 thereof, Records of Riverside County, California.
Found monument as noted at all points shown thus •
Set 3/4" Iron Pipe topped RE 9876 at all points shown thus ° unless otherwise noted.

COUNTY SURVEYOR'S CERTIFICATE

This map has been examined for conformance with the requirements of Chapter 15 of Division 3 of the Business and Profession Code this 2nd day of October, 1963.
A.C. KEITH County Surveyor
By A. C. Keith

2 RS40/73