

IN THE COUNTY OF RIVERSIDE

RECORD OF SURVEY

OF A PORTION OF LOT 5, BLOCK 10 OF TRACT NO. 2 OF LA SIERRA HEIGHTS,
MAP BOOK 7, PAGE 66, RECORDS OF RIVERSIDE COUNTY, CALIFORNIA. LOCATED
IN RANCHO LA SIERRA SEPULVEDA.

AUGUST 1963

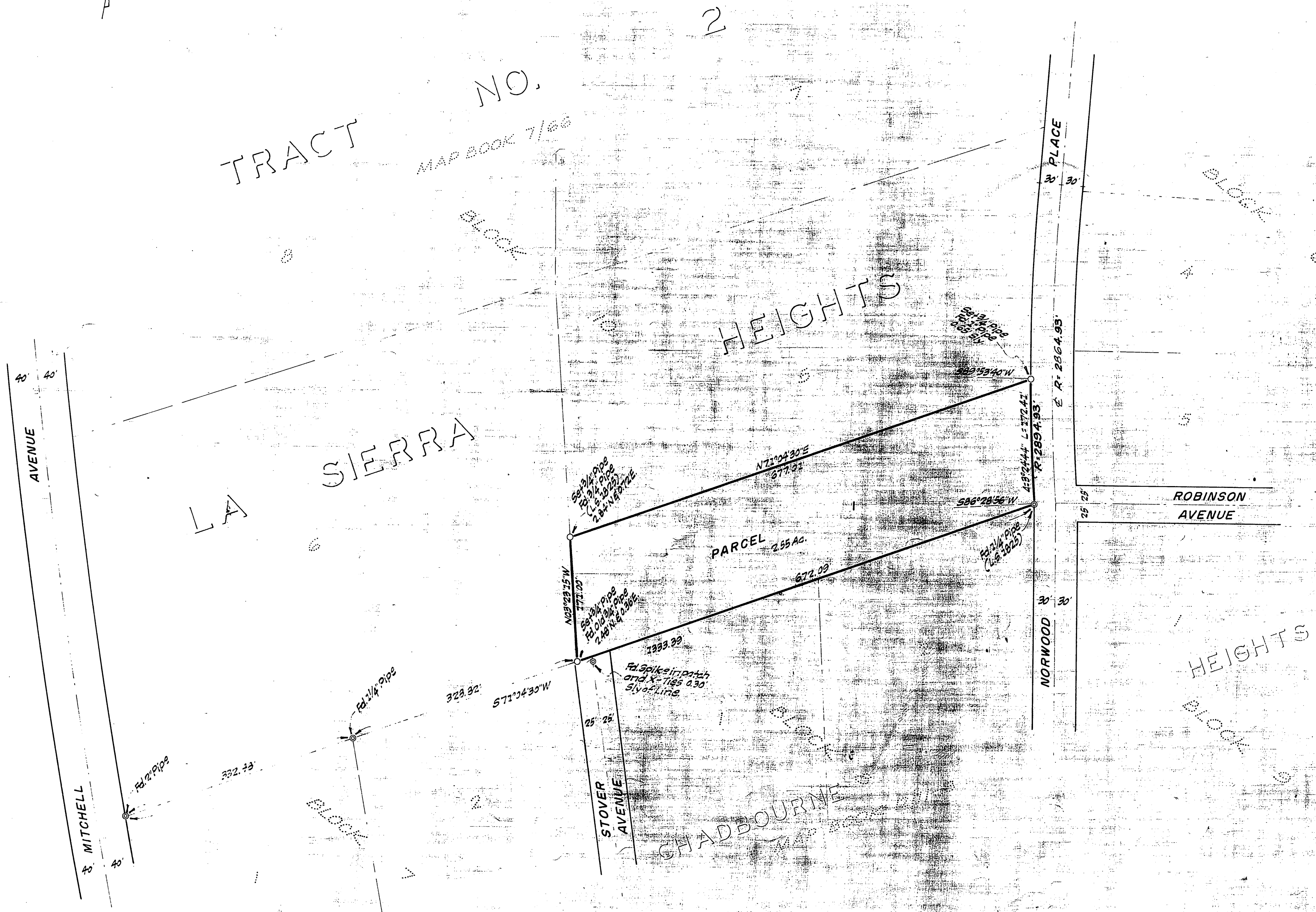
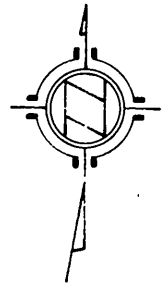
J. F. DAVIDSON, C. E.

SCALE 1" = 100'

Filed for record at the request of County Surveyor
this 13 day of OCTOBER, 1963
at 3:45 P.M. in Book 40 of Record of Survey - Page
78

Fee \$ 5.00 No. _____
W.D. BALDGH County Recorder

By Lawson B. Vaughn Secy.



ENGINEER'S CERTIFICATE

This map correctly represents a survey made by me or under my direction in conformance with the requirements of the Land Surveyors' Act at the request of J.E. STEICKLER on 17 August, 1963.

J. F. Davidson
Registered Civil Engineer No. 882

ENGINEER'S NOTE

Bearings are based on the southerly line of lots 5 and 6 of Block 10, being S 71° 04' 30" W as shown on map of "TRACT NO. 2 OF LA SIERRA HEIGHTS" Map Book 6, Pg. 77, Records of Riverside County, Calif.

COUNTY SURVEYOR'S CERTIFICATE

This map has been examined for conformance with the requirements of the Land Surveyors' Act this 14th day of October, 1963.

A.C. KEITH, County Surveyor

By A.C. Keith

R/S 40/78

RS 40/78