

IN THE CITY OF RIVERSIDE

RECORD OF SURVEY

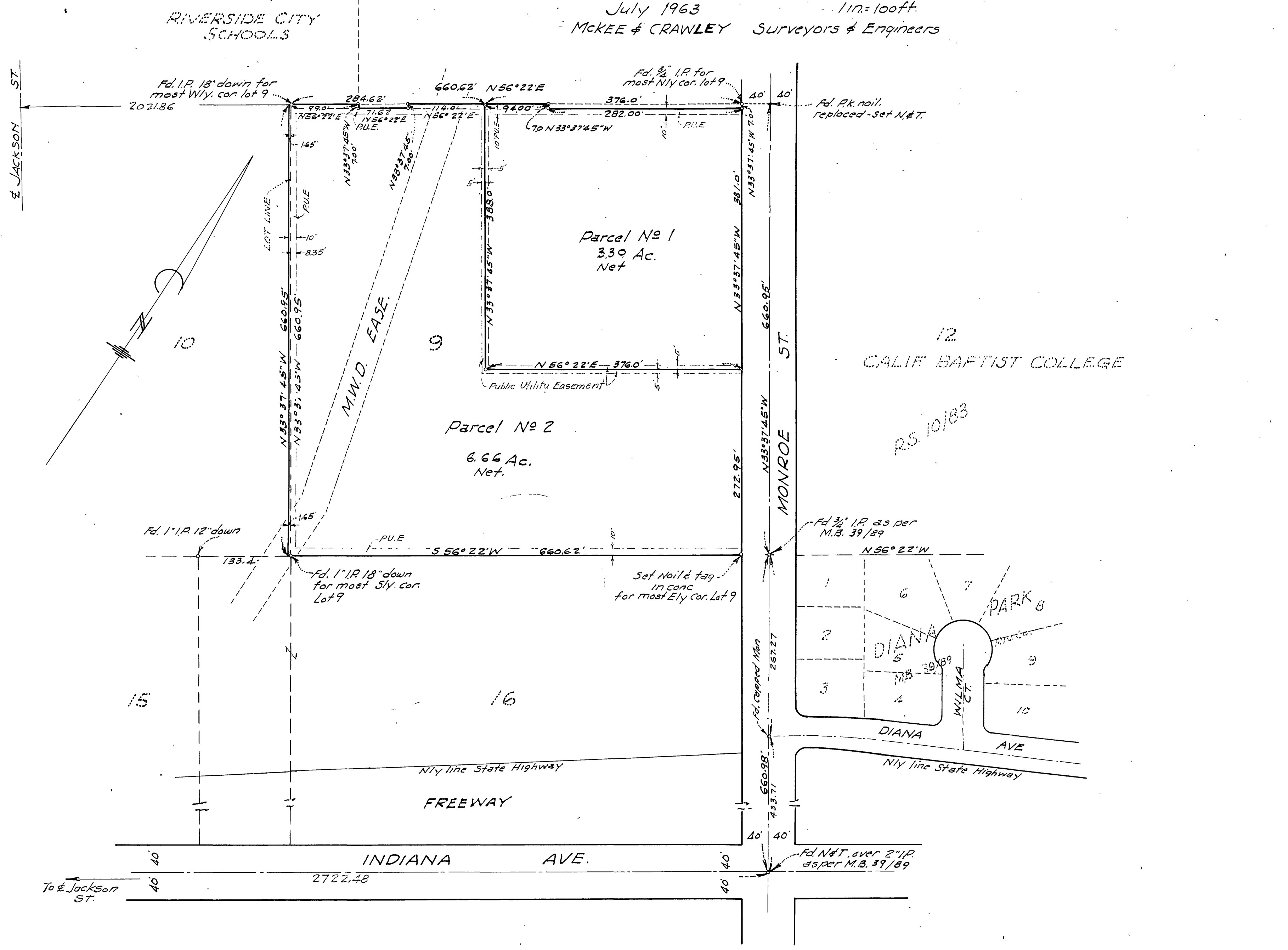
Being a Survey of a Portion of Lot 9 to Blk. 24 of the R.L.#1. Co as Shown by Map on file in Book 1 of Maps Page 70 Records of San Bernardino Co. Calif.

July 1963 117=100ft.
McKEE & CRAWLEY Surveyors & Engineers

Filed for the record at the request of County Surveyor this 17 day of OCTOBER 1963 at 4:00 P.M. in Book 40 of Record of Survey at Page 84

Fee \$ 5.00 No. 10
W. D. Balogh County Recorder

By Aaron B. Vaughn Deputy



SURVEYOR'S CERTIFICATE

This map correctly represents a survey made by me or under my direction in conformance with the requirements of the Land Surveyors Act at the request of Riverside Christian High School in August 1962.

George O. Crawley
Registered Civil Engineer No. 9455

SURVEYOR'S NOTE

Basis of bearings for this map is the center line of Monroe St shown as N 33° 37' 45" W on M.B. 39 pg 89 Riv. Co. Records. Monuments found as shown. o indicates 3/4" Iron pipe set & tagged RE. 9455 unless otherwise noted.

COUNTY SURVEYOR'S CERTIFICATE

This map has been examined for conformance with the requirements of the Land Surveyors Act. this 17 day of October 1963.

A. C. KEITH County Surveyor

By A. C. Keith