

IN THE CITY OF RIVERSIDE

RECORD OF SURVEY

OF A PORTION OF LOT 76 OF UNIVERSITY HILLS UNIT 2, MAP BOOK 35, PAGES 65 AND 66, RECORDS OF RIVERSIDE COUNTY, CALIF. LOCATED IN SECTION 29, T. 2 S., R. 4 W. S.B.B. AND M. AUGUST 1963

J. F. DAVIDSON, C.E.

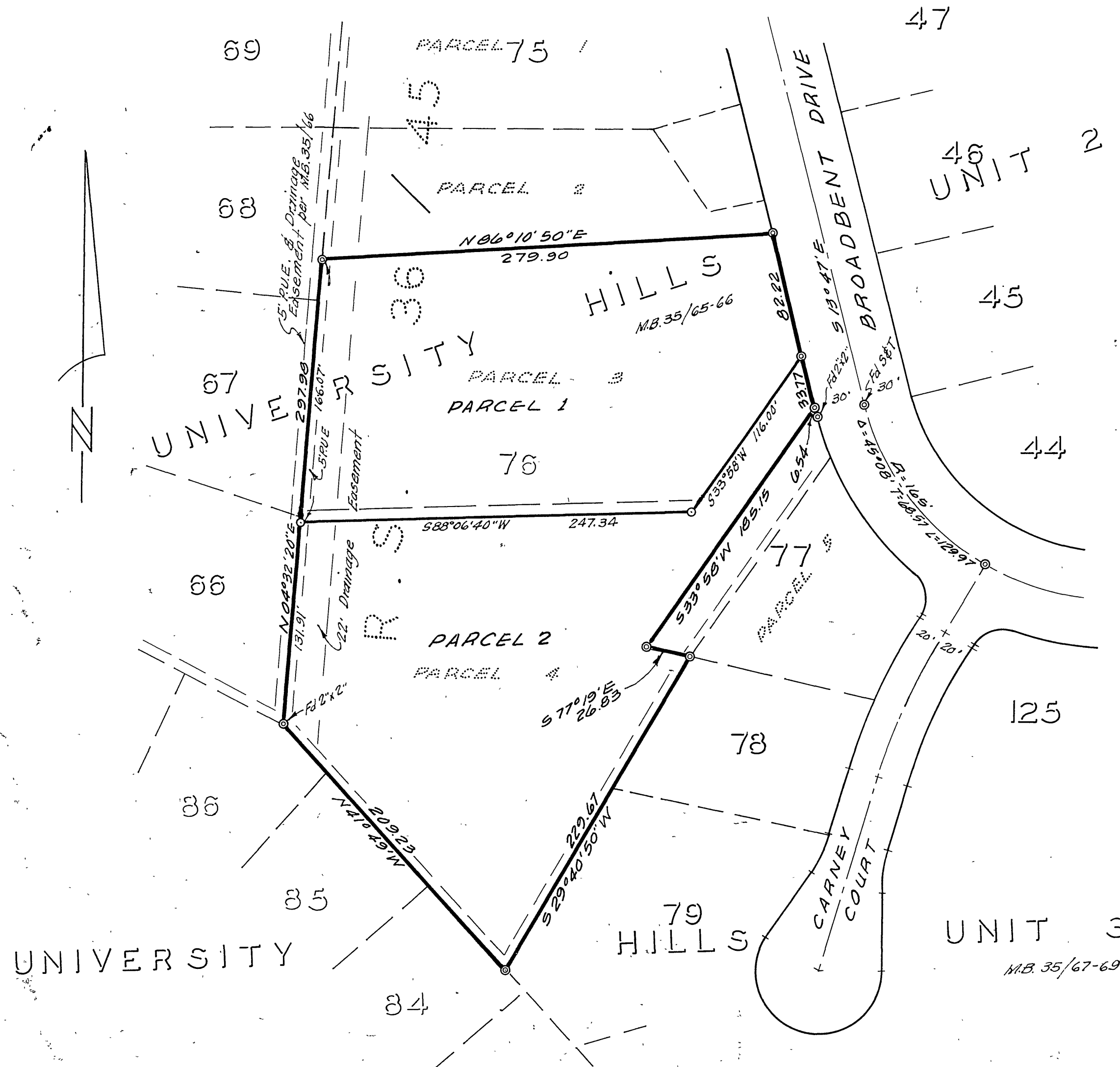
SCALE 1" = 60'

Filed for record at the request of County Surveyor this 21 day of OCTOBER, 1963 at 3:40 P.M. in Book 40 of Record of Survey at Page 89

Fee \$ 5.00 No. 22214

W.D. BALOGH County Recorder

By Baron B. Vaughn Deputy



ENGINEER'S CERTIFICATE

This map correctly represents a survey made by me or under my direction in conformance with the requirements of the Land Surveyors' Act of the request of WALKER, Mr. DIST. MAN in September, 1962.

J. F. Davidson
Registered Civil Engineer No. 0662

ENGINEER'S NOTE

Bearings are based on the Westerly line of lot 76, being N04°32'20"E as shown on map of University Hills Unit 2, M.B. 35/65, 66, Records of Riverside County, California.

Set 3/4" I.R., tagged RE862, at points shown thus: ⊙
Set 1/4" I.R. at points shown thus: ⊙, unless otherwise noted.

COUNTY SURVEYOR'S CERTIFICATE

This map has been examined for conformance with the requirements of the Land Surveyors' Act. This 14th day of October, 1963.

A.C. KEITH County Surveyor

By A. C. Keith