

IN THE COUNTY OF RIVERSIDE

RECORD OF SURVEY

Being a portion of Section 2, and a portion of the NW 1/4 of Section 11, T35, R4W, S.B. B. & M., Calif.

AUGUST 1963

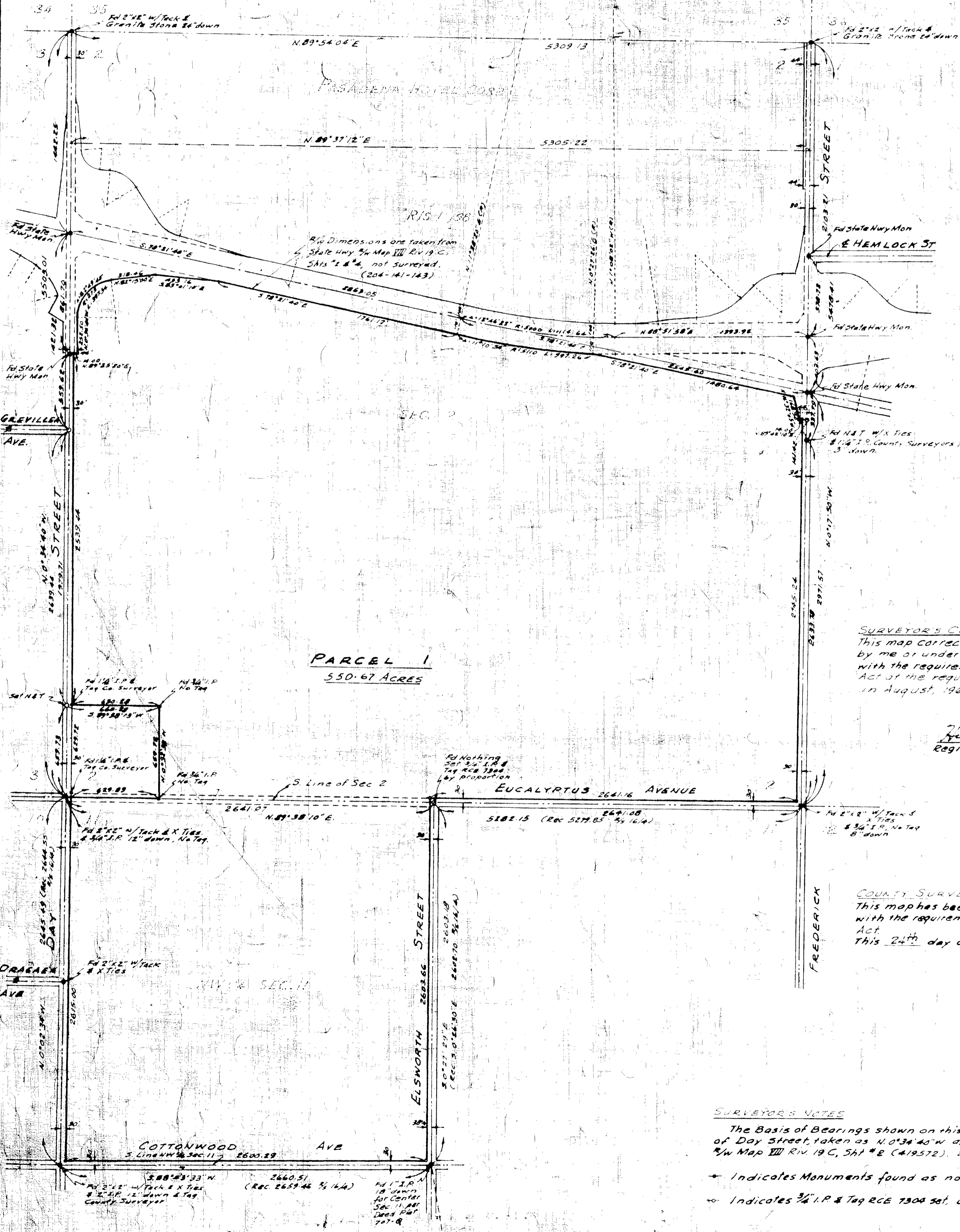
HUGH M. GALLAHER R.C.E. 7304

Filed for record at the request of the County Surveyor this 24 day of OCTOBER 1963, at 2:45 P.M. in Book 40 of Record of Survey at page 91

Fee \$5.00

W. D. BALOGH
County Recorder

By Baron B. Vaughn
Deputy



PARCEL 1
550.67 ACRES

PARCEL 2
2660.51 ACRES

SURVEYOR'S CERTIFICATE
 This map correctly represents a survey made by me or under my direction in conformance with the requirements of the Land Surveyors Act at the request of Joe Perry in August, 1963.

Hugh M. Gallaher
 Registered Civil Engineer No. 7304

COUNTY SURVEYOR'S CERTIFICATE
 This map has been examined for conformance with the requirements of the Land Surveyors Act. This 24th day of October 1963.

A. C. KEITH
 County Surveyor
 By A. C. Keith

SURVEYOR'S NOTES

The Basis of Bearings shown on this map is the Center Line of Day Street, taken as N 0° 34' 40" W as shown on State Hwy #14 Map III RIV. 19 C, Sht # B (419572), 204-141-123

- Indicates Monuments found as noted.
- Indicates 3/4 I.P. & Tag RCE 7304 set, unless otherwise noted.