

40/92
RS 40/92

RECORD OF SURVEY

IN THE COUNTY OF RIVERSIDE

DESCRIPTION OF PROPERTY SURVEYED

BEING A PORTION OF BLOCKS 32 AND 34 OF LA SIERRA GARDENS AS SHOWN IN MAP BOOK II PAGE 43 RIVERSIDE COUNTY. AND A PORTION OF LOTS 10 & 11 OF BLOCK "D" OF THE HOLDEN AVE. TRACT AS SHOWN IN M.B. II PAGES 67-69 RIVERSIDE COUNTY

BY

RIVERSIDE COUNTY FLOOD CONTROL AND WATER CONSERVATION DISTRICT

OCTOBER, 1963

Filed for record at the request of County Surveyor This 24 day of OCTOBER 1963 at 3:45 P.M. in Book 40 of Record of Survey at pages 92, 93, 94, & 95.

Fee NONE
By W. D. BALOGH
COUNTY RECORDER
By Parsons B. Vanigien
DEPUTY

SURVEYOR'S CERTIFICATE


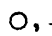

This map correctly represents a survey made by me or under my direction in conformance with the requirements of the Land Surveyor's Act at the request of Riverside County Flood Control Water Conservation District in July, 1963.

John W. Bussard
CHIEF ENGINEER R.C.E. NO. 8822

NOTE

THE PURPOSE OF THIS MAP IS TO DELINEATE CERTAIN PARCELS OF LAND INCLUDED WITHIN THE PROPOSED RIGHT OF WAY OF A PORTION OF THE LA SIERRA STORM CHANNEL

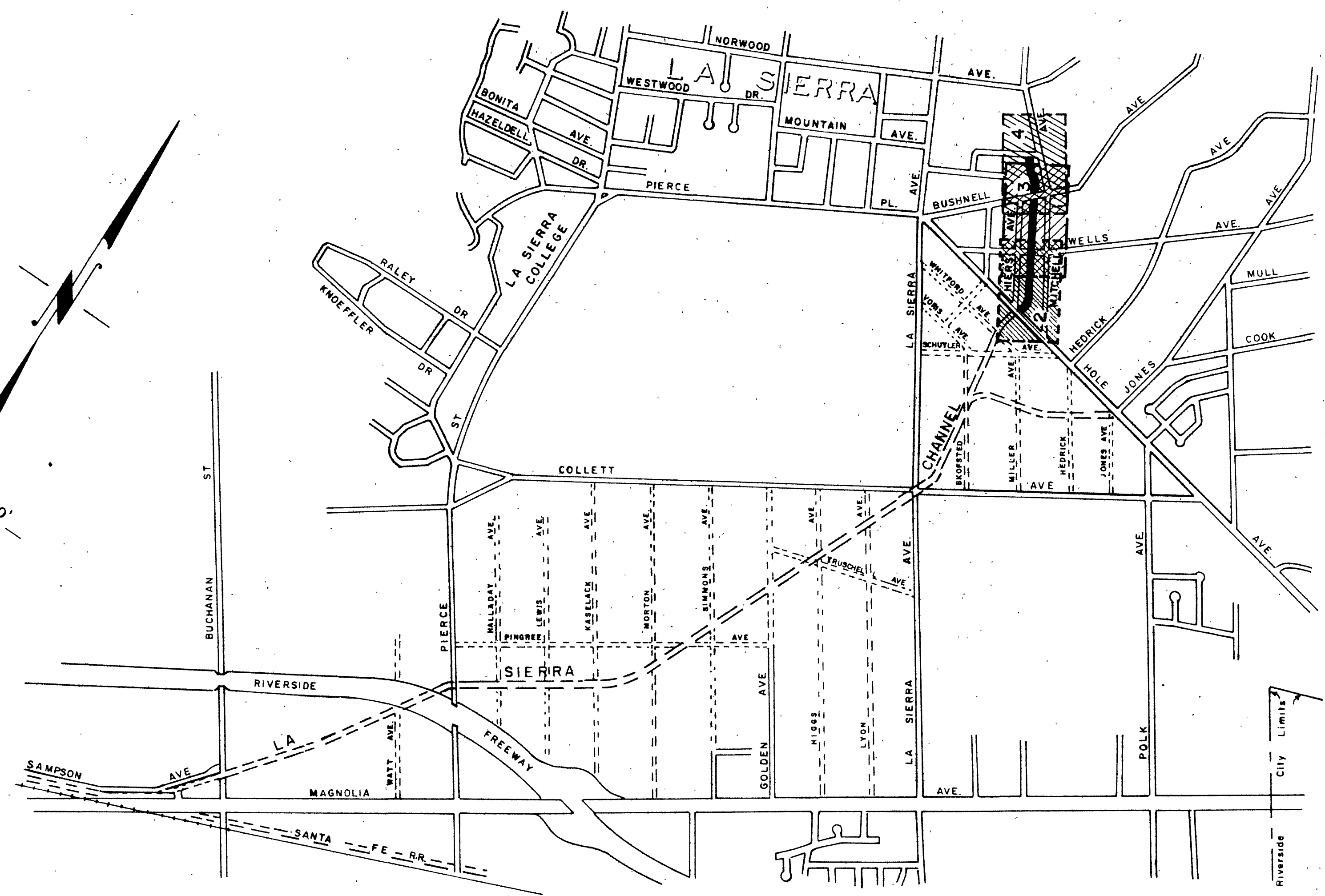
SURVEYOR'S NOTE

1. BASIS OF BEARINGS for this Survey is the centerline of Hole Avenue, (N78°54'26"W) as shown on R.S. 35 pg. 18
2. Iron Pipe or monuments found, shown thus 
3. Nothing set, position determined by calculation unless otherwise noted, shown thus 
4. 4" Round concrete monuments with Brass Tag marked R.C.F.C. & W.C.D. shown thus 

COUNTY SURVEYOR'S CERTIFICATE

This map has been examined for conformance with the requirements of the Land Surveyor's Act this 24th day of October 1963

A.C. Keith
COUNTY SURVEYOR
By A.C. Keith



RS 40/92

40/93
R/S 40/93

SURVEYOR'S NOTE

BASIS OF BEARINGS for this survey is the center line of HOLE AVENUE (N78°54'26"W) as shown R.S. 35 page 18.

1. Iron Pipe or monuments found are shown thus \odot
2. Nothing set; position determined by calculation unless otherwise noted; shown thus \circ, \perp
3. 4" Round concrete monuments with Brass Tag marked R.C.F.C. & W.C.D. shown thus \bullet

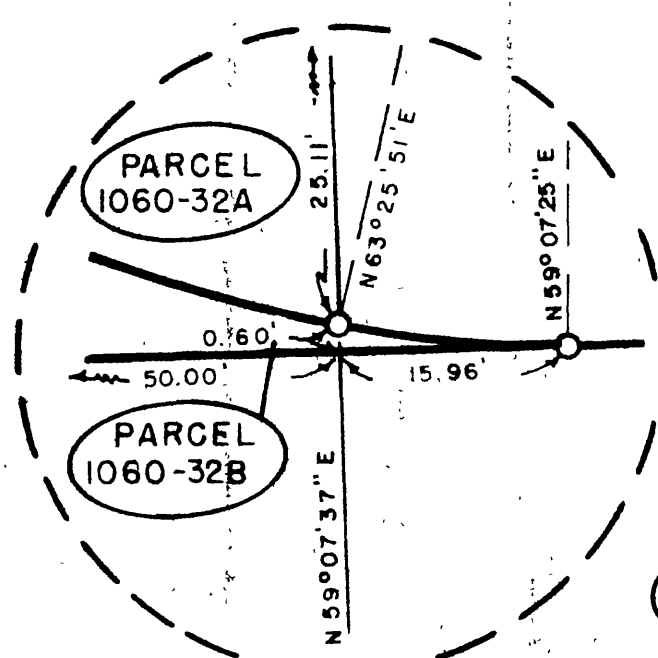
SCALE: 1" = 50'

RECORD OF SURVEY

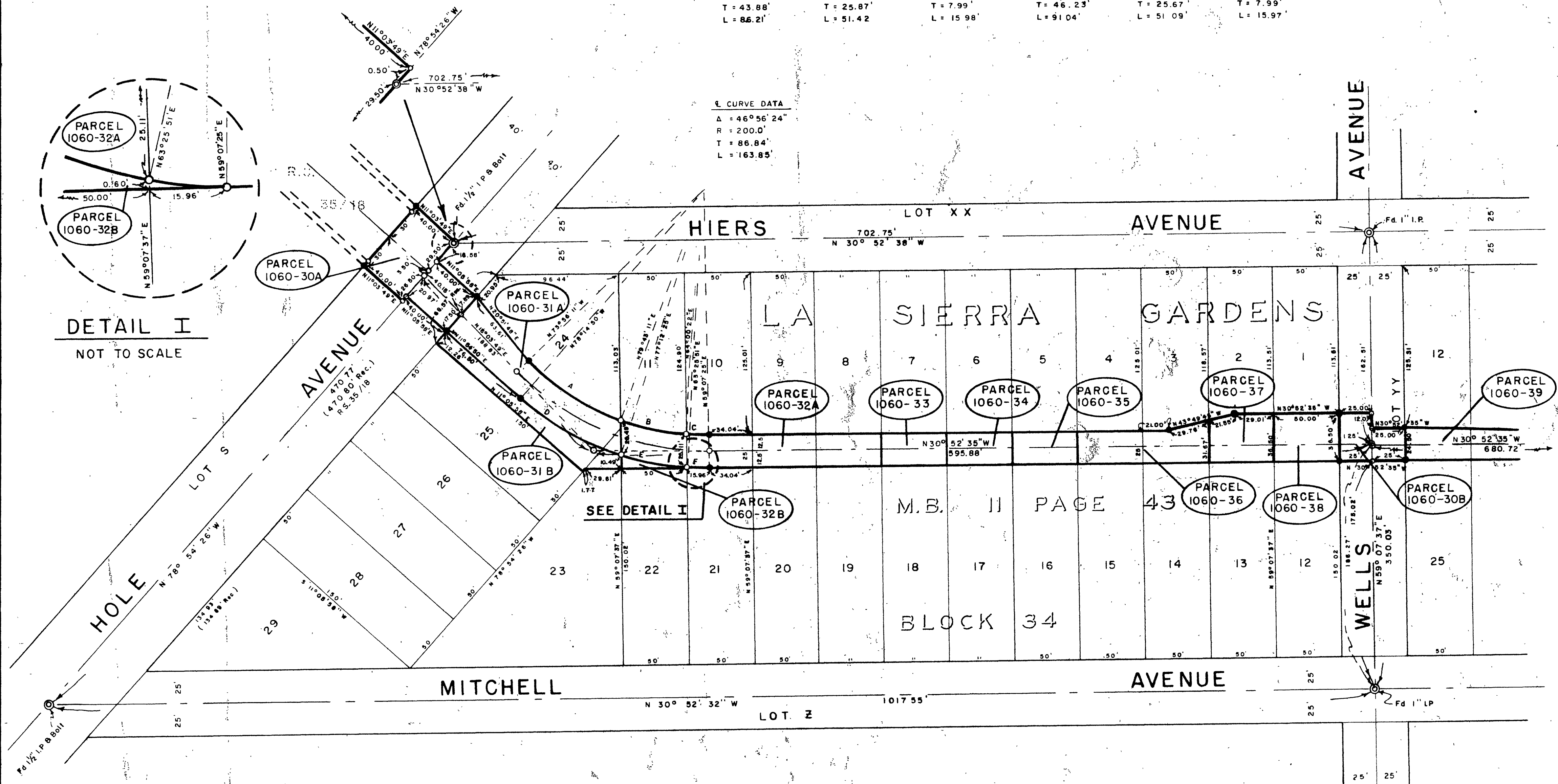
IN THE COUNTY OF RIVERSIDE

A CURVE DATA	B CURVE DATA	C CURVE DATA	D CURVE DATA	E CURVE DATA	F CURVE DATA
$\Delta = 26^\circ 20' 38''$	$\Delta = 15^\circ 42' 49''$	$\Delta = 04^\circ 52' 57''$	$\Delta = 24^\circ 32' 45''$	$\Delta = 13^\circ 46' 34''$	$\Delta = 04^\circ 18' 26''$
R = 187.5'	R = 187.5'	R = 187.5'	R = 212.5'	R = 212.5'	R = 212.5'
T = 43.88'	T = 25.87'	T = 7.99'	T = 46.23'	T = 25.67'	T = 7.99'
L = 86.21'	L = 51.42'	L = 15.98'	L = 91.04'	L = 51.09'	L = 15.97'

G CURVE DATA
$\Delta = 46^\circ 56' 24''$
R = 200.0'
T = 86.84'
L = 163.85'



DETAIL I
NOT TO SCALE



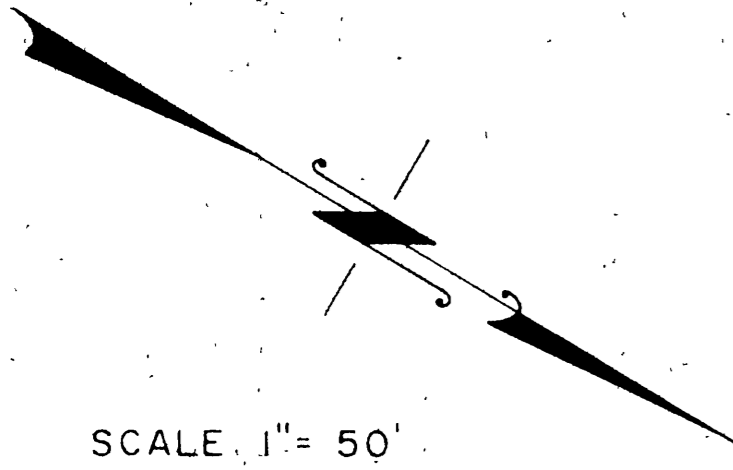
MATCH SHEET 3

RECORDED

40/94
RS40/94

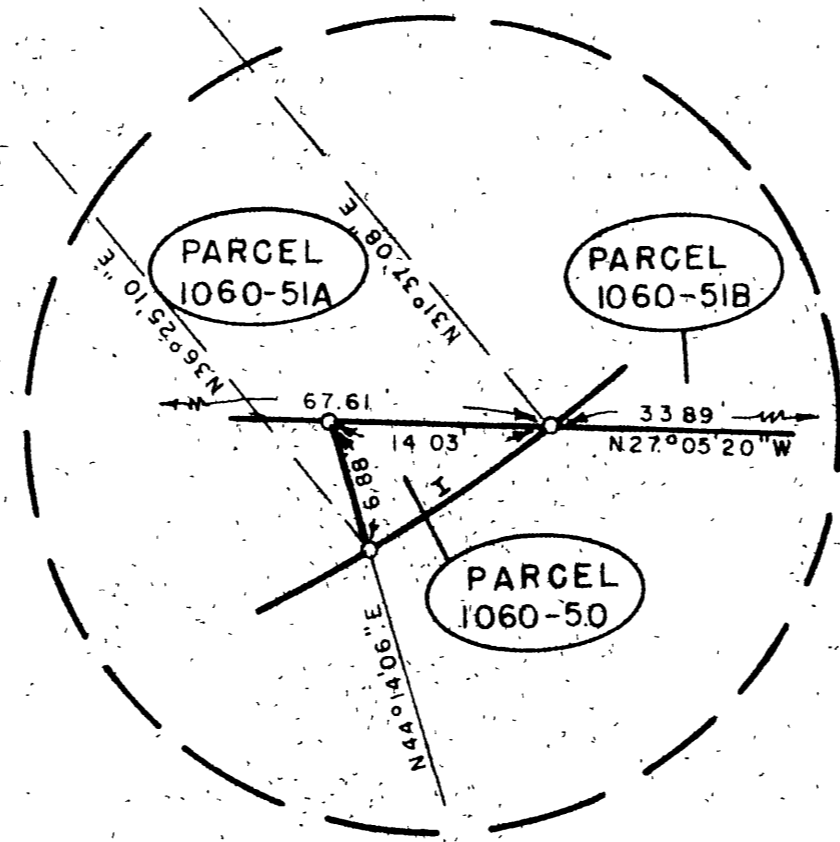
RECORD OF SURVEY

IN THE COUNTY OF RIVERSIDE



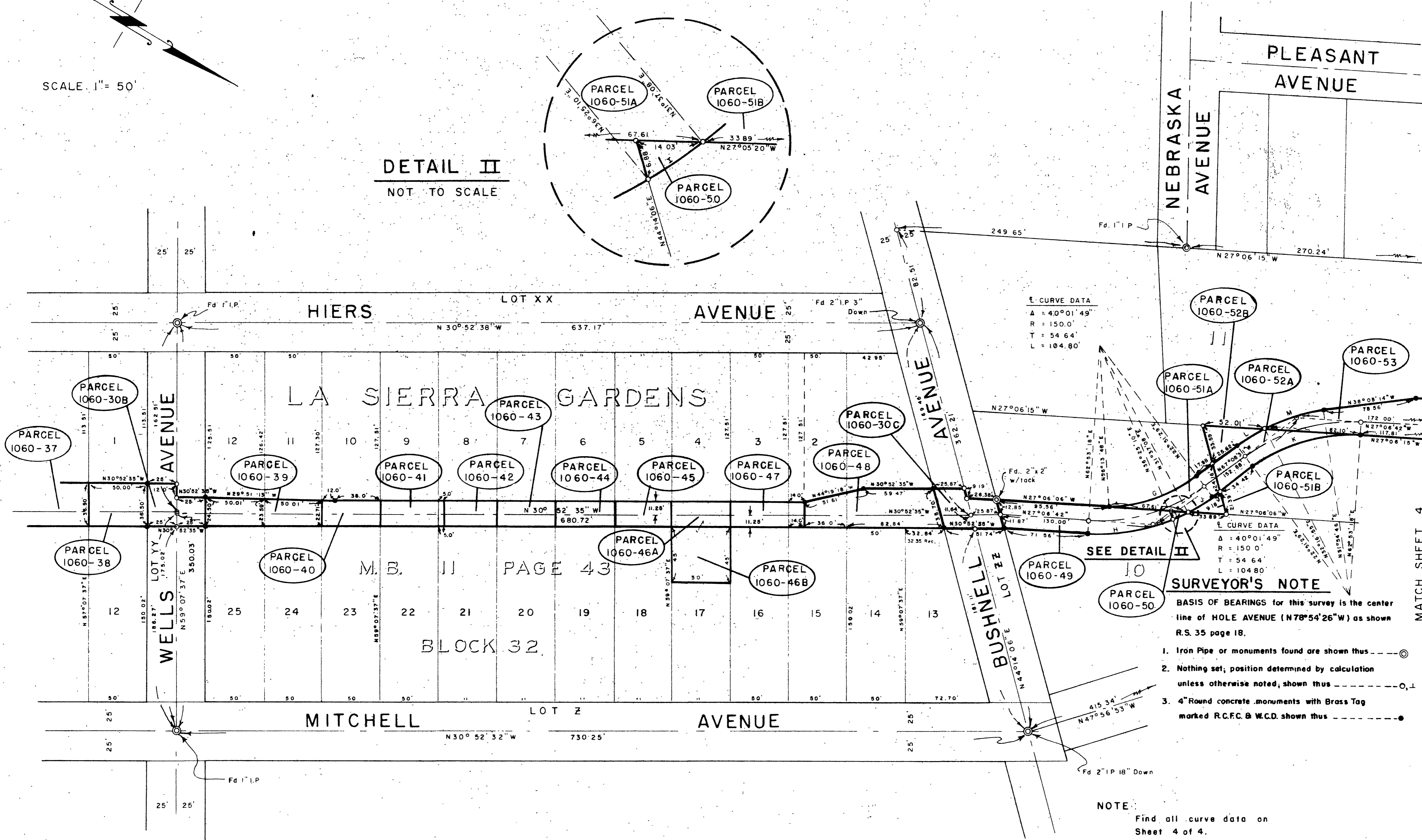
SCALE 1" = 50'

DETAIL II
NOT TO SCALE



MATCH SHEET 2

MATCH SHEET 4



CURVE DATA
Δ = 40°01'49"
R = 150.0'
T = 54.64'
L = 104.80'

CURVE DATA
Δ = 40°01'49"
R = 150.0'
T = 54.64'
L = 104.80'

SEE DETAIL II

SURVEYOR'S NOTE

BASIS OF BEARINGS for this survey is the center line of HOLE AVENUE (N78°54'26"W) as shown R.S. 35 page 18.

1. Iron Pipe or monuments found are shown thus
2. Nothing set, position determined by calculation unless otherwise noted, shown thus
3. 4" Round concrete monuments with Brass Tag marked R.C.F.C. & W.C.D. shown thus

NOTE:
Find all curve data on Sheet 4 of 4.

RS40/94

RECORD OF SURVEY

IN THE COUNTY OF RIVERSIDE

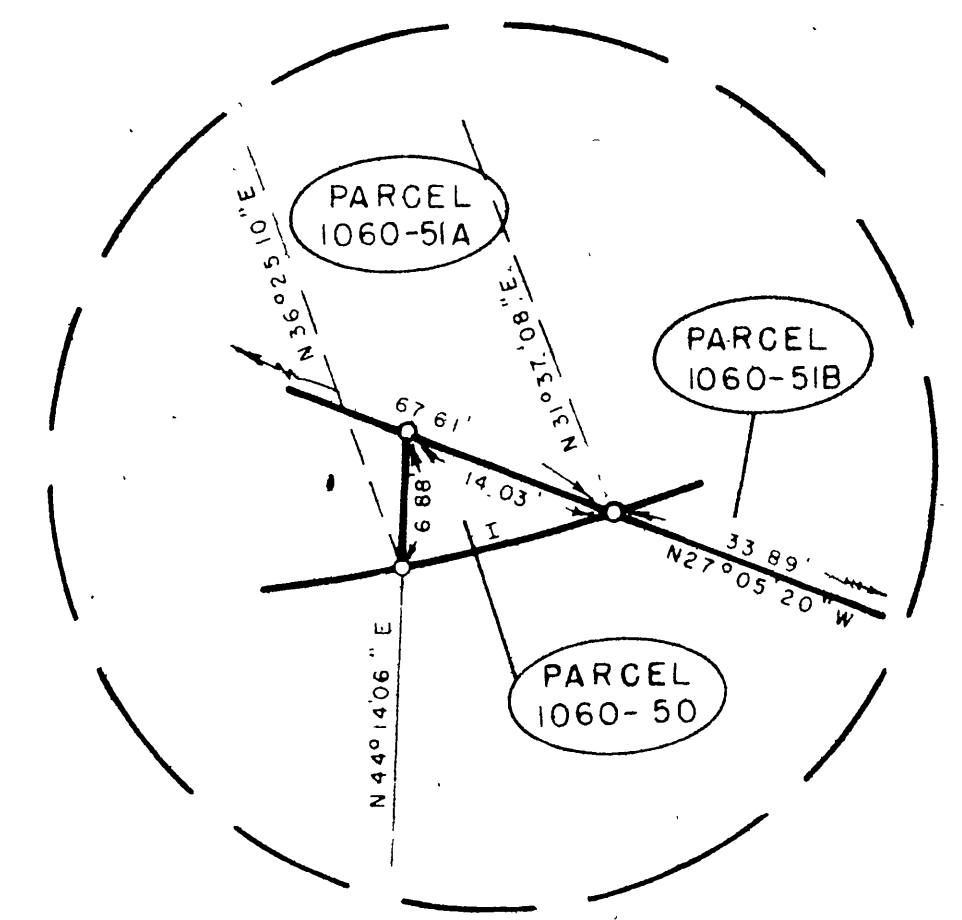
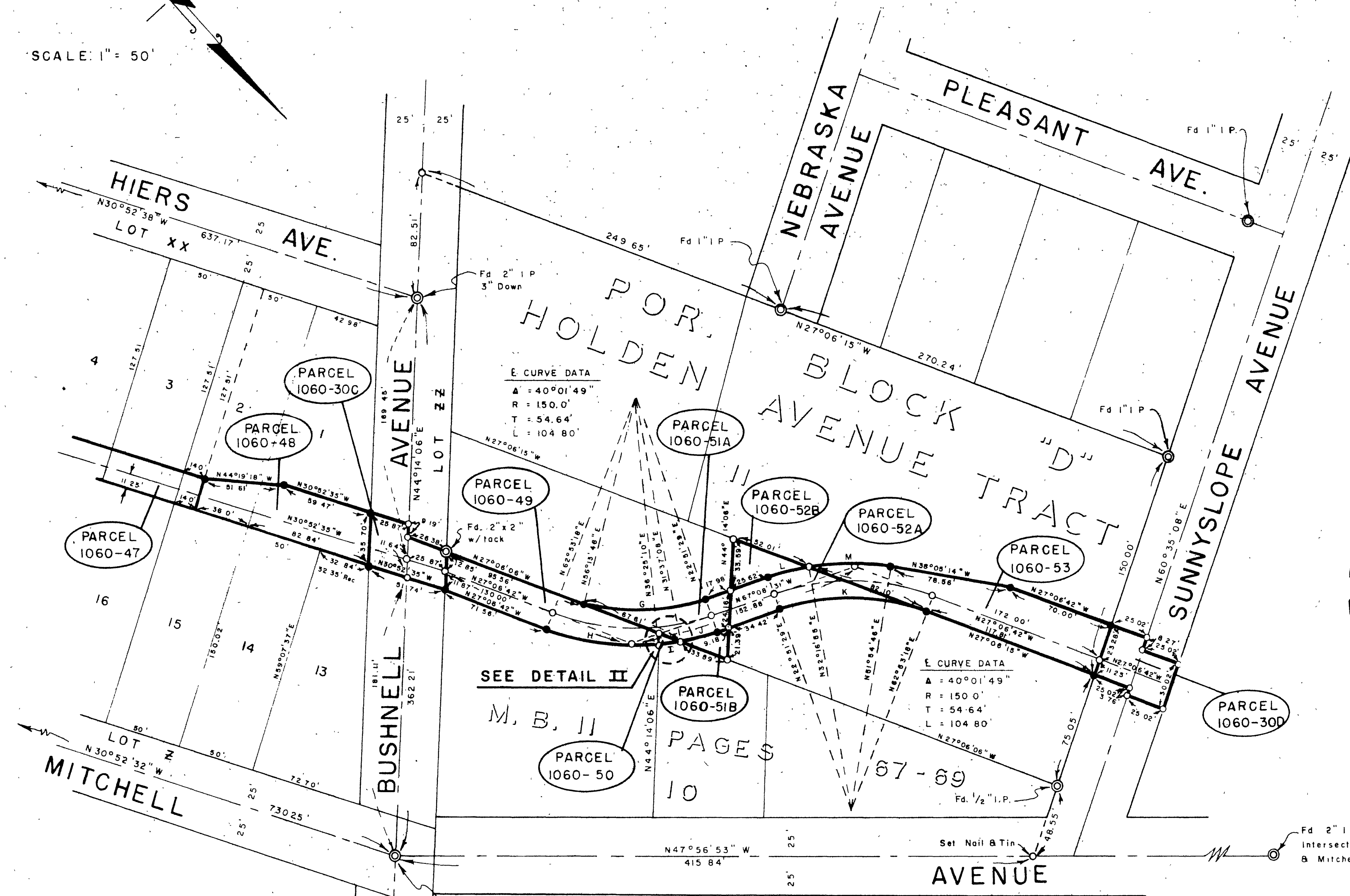
SCALE: 1" = 50'

SURVEYOR'S NOTE

BASIS OF BEARINGS for this survey is the center line of HOLE AVENUE (N78°54'26"W) as shown R.S. 35 page 18.

1. Iron Pipe or monuments found are shown thus \odot
2. Nothing set, position determined by calculation unless otherwise noted; shown thus \circ , \perp
3. 4" Round concrete monuments with Brass Tag marked R.C.F.C. & W.C.D., shown thus \bullet

MATCH SHEET 3



DETAIL II
NOT TO SCALE

G CURVE DATA	H CURVE DATA	I CURVE DATA	J CURVE DATA	K CURVE DATA	L CURVE DATA	M CURVE DATA
$\Delta = 33^{\circ}22'19''$	$\Delta = 26^{\circ}28'08''$	$\Delta = 04^{\circ}48'02''$	$\Delta = 08^{\circ}45'39''$	$\Delta = 40^{\circ}01'49''$	$\Delta = 9^{\circ}25'26''$	$\Delta = 19^{\circ}37'51''$
$R = 138.75'$	$R = 161.25'$	$R = 161.25'$	$R = 161.25'$	$R = 138.75'$	$R = 161.25'$	$R = 161.25'$
$T = 41.59'$	$T = 37.92'$	$T = 6.76'$	$T = 12.35'$	$T = 50.54'$	$T = 13.29'$	$T = 27.90'$
$L = 80.81'$	$L = 74.49'$	$L = 13.51'$	$L = 24.66'$	$L = 96.94'$	$L = 26.52'$	$L = 55.25'$