

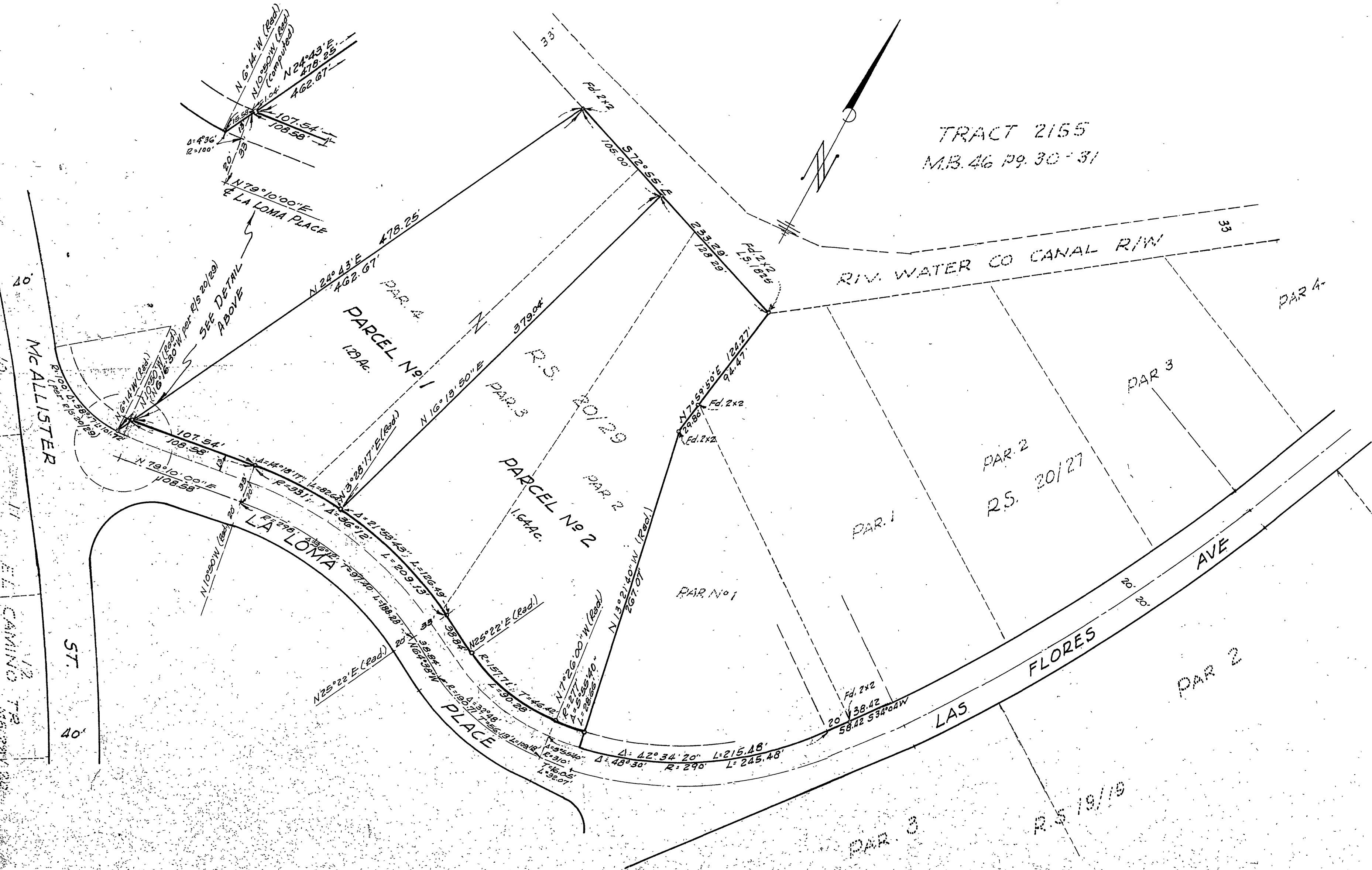
IN THE CITY OF RIVERSIDE
RECORD OF SURVEY

of a Portion of Lot 10 BALMORAL HEIGHTS as shown by Map on file in
BK. 11 pg. 93 of Maps Records of Riverside County Calif. also shown as Parcels
2, 3, and 4 of R.S. Map Bk. 20 pg. 29 Riverside Co. Records.
Located in Section 19 T.35. R.5W. S.B.B.M.

July 1963 Scale 1in=60ft.
McKEE and CRAWLEY ~ Surveyors & Engrs

RECORDERS CERTIFICATE
Filed for the record at the request of County Surveyor
this 28 day of OCTOBER, 1963
at 1:15 P.M. in Book 40 of Record of Survey at Page
98

Fee \$ 5.00 No. 17578
W. D. Balogh County Recorder
By Aaron B. Vaughn Deputy



SURVEYOR'S CERTIFICATE
This map correctly represents a survey made by me or under my
direction in conformance with the requirements of
The Land Surveyor's Act at the request
of Rev G.A. Gaines in July, 1963
George O. Crawley
Registered Civil Engineer No. 9455

SURVEYOR'S NOTE
Bearings are based on R.S. 20/29, bearings
being as shown thereon
1/2" Iron Pipe tagged RE-9455 set at corners unless
otherwise noted
monuments found as noted

COUNTY SURVEYOR'S CERTIFICATE
This map has been examined for conformance with the require-
ments of The Land Surveyor's Act.
this 25th day of October, 1963.
A. C. Keith County Surveyor
By A. C. Keith