

IN THE COUNTY OF RIVERSIDE

RECORD OF SURVEY

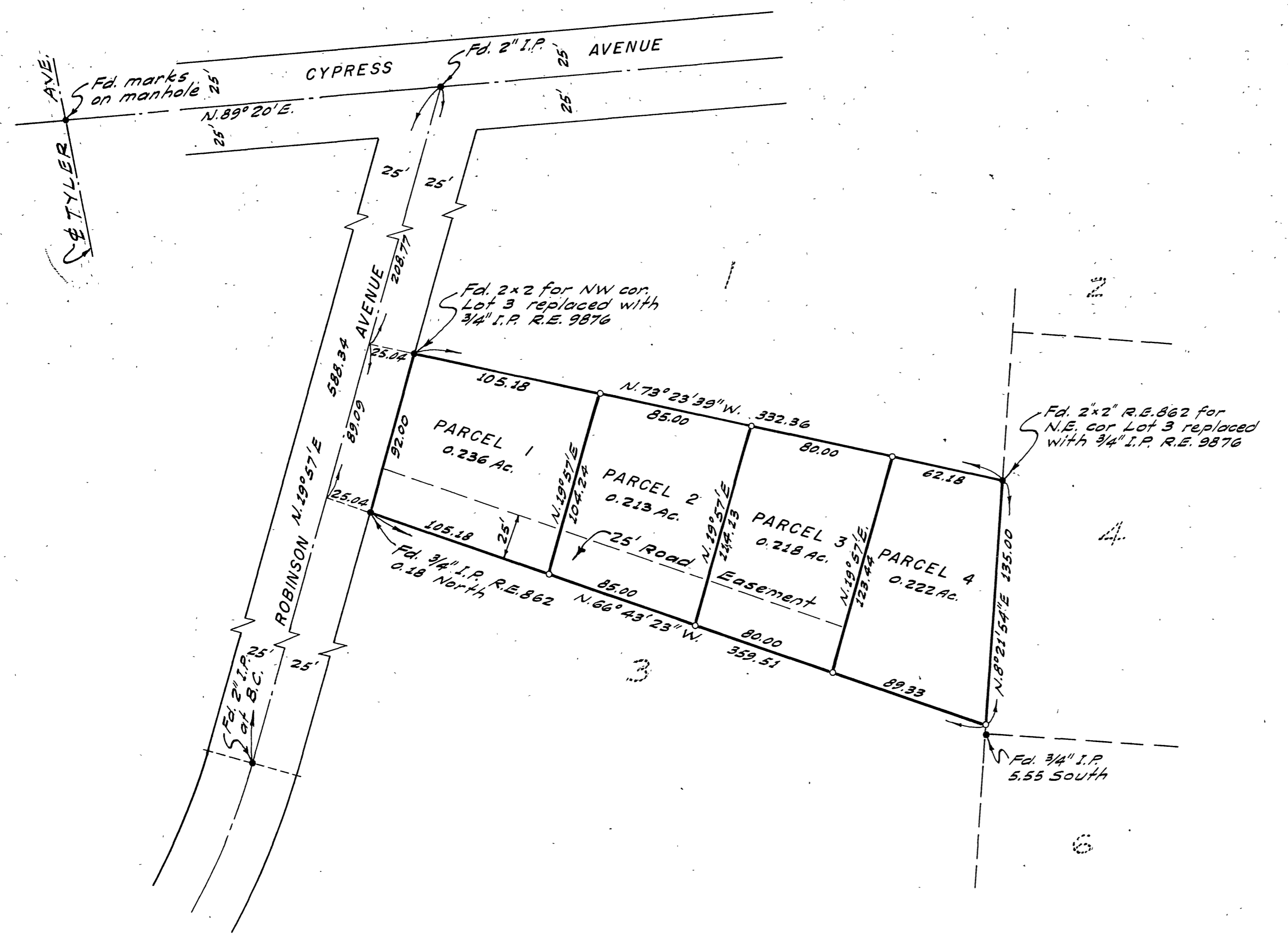
OF A PORTION OF LOT 3 BLOCK 18 OF LA GRANADA AS SHOWN BY MAP ON FILE IN BOOK 12 OF MAPS AT PAGES 42 THRU 51, RIVERSIDE COUNTY RECORDS IN RANCHO LA SIERRA SEPULVEDA

JANUARY 1964

SCALE 1" = 50'

ALBERT A. WEBB ASSOCIATES
Civil Engineers

RECORDER'S CERTIFICATE
Filed for record this 15 day of January 1964 at 3:40 P.M. in Book 44 of Record of Survey at Page 55 at the request of County Surveyor.
Fee \$ 5.00 No. 5338
W.D. BALOGH, County Recorder
By Aaron R. Vaughan Deputy



SURVEYOR'S CERTIFICATE
This map correctly represents a survey made by me or under my direction in conformance with the requirements of the Land Surveyors' Act at the request of Fred Hanson in December 1963.
Ernest H. Webb
Registered Civil Engineer No 9876

- SURVEYOR'S NOTES**
1. Basis of Bearings is the centerline of Robinson Avenue taken as N. 19° 57' E. as shown by map of La Granada on file in Book 12 of Maps, Pages 42-51, Riverside County Records.
 2. Found monuments as noted at all points shown thus •
 3. Set 3/4" Iron Pipe tagged R.E. 9876 at all points shown thus °

COUNTY SURVEYOR'S CERTIFICATE
This map has been examined for conformance with the requirements of the Land Surveyors' Act this 5th day of January 1964.
A.C. KEITH County Surveyor
By A.C. Keith