

42/70

IN THE CITY OF RIVERSIDE

RECORD OF SURVEY

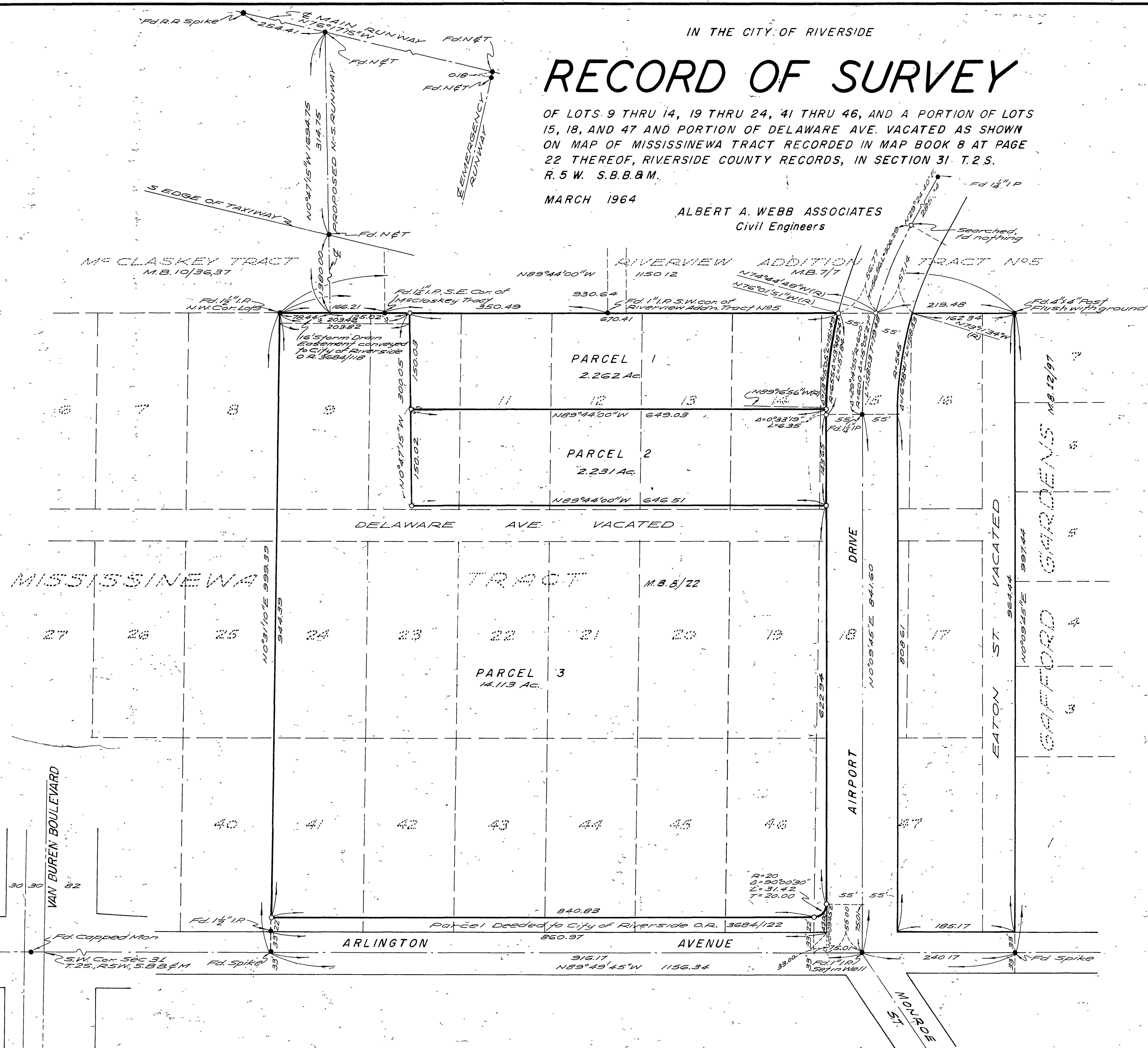
OF LOTS 9 THRU 14, 19 THRU 24, 41 THRU 46, AND A PORTION OF LOTS 15, 18, AND 47 AND PORTION OF DELAWARE AVE. VACATED AS SHOWN ON MAP OF MISSISSINEWA TRACT RECORDED IN MAP BOOK 8 AT PAGE 22 THEREOF, RIVERSIDE COUNTY RECORDS, IN SECTION 31 T.2 S. R.5 W. S.B.B.&M.

MARCH 1964

ALBERT A. WEBB ASSOCIATES
Civil Engineers

RECORDER'S CERTIFICATE

Filed for record this 15 day of May 1964 at 3:00 P.M.
in Book 42 of Record of Surveys at page 70 at the
request of the County Surveyor
Fee \$ 5.00 W.D. BALOGH County Recorder
No. _____ By Clara B. Vaughn Deputy



Scale: 1"=100'

SURVEYOR'S CERTIFICATE

This map correctly represents a survey made by me or under my direction in conformance with the requirements of the Land Surveyors' Act of the request of Fred Jennings Inc. in April, 1964.

Ernest N. Webb
R. C. E. No. 9876

SURVEYOR'S NOTES

1. Basis of Bearing is the centerline of Arlington Avenue taken as N89°49'45"W as shown by map on file in Book 32 of Records of Survey, Page 48, Riverside County Records.
2. Found monuments as noted at all points shown thus.
3. Set 2" I.P. tagged R.E. 9876 of all points shown thus unless otherwise noted.

COUNTY SURVEYOR'S CERTIFICATE

This map has been examined for conformance with the requirements of the Land Surveyors' Act this 14 day of May 1964.

County Surveyor
By J. M. Raible Deputy