

IN THE CITY OF RIVERSIDE

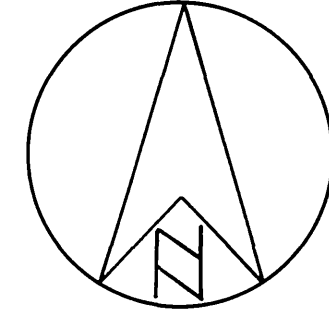
# RECORD OF SURVEY

of a portion of the NE 1/4 of the NE 1/4 of the NE 1/4 of Section 24,  
T. 2 S., R. 5 W., S. 13. B. & M.

**RECORDER'S CERTIFICATE**  
Filed for record this 26 day of May, 1964,  
at 1:30 P.M. in Book 42 of Records of Survey at  
page 17, at the request of the County Surveyor.

Fee \$ 5.00 No. \_\_\_\_\_  
W.D. BALOGH, County Recorder

By B. Vaughn Deputy



Scale: 1"=50'

By ALBERT A. WEBB ASSOCIATES  
CIVIL ENGINEERS  
RIVERSIDE CALIFORNIA  
DECEMBER 1963

**SURVEYOR'S CERTIFICATE**

This map correctly represents a survey made by me or under my direction  
in conformance with the requirements of the Land Surveyor's Act  
of the request of OWL SERVICE ROCK COMPANY, during  
December 1963.

Albert A. Webb  
Registered Civil Engineer No 9876

**SURVEYOR'S NOTE:**

Basis of Bearings is the centerline of Spruce Street,  
taken as N. 89° 58' 46" W., as same is shown by State Hwy.  
Right of Way Drawing III, RV 19-B, Sheet 22 of 26  
sheets approved December 9, 1955.

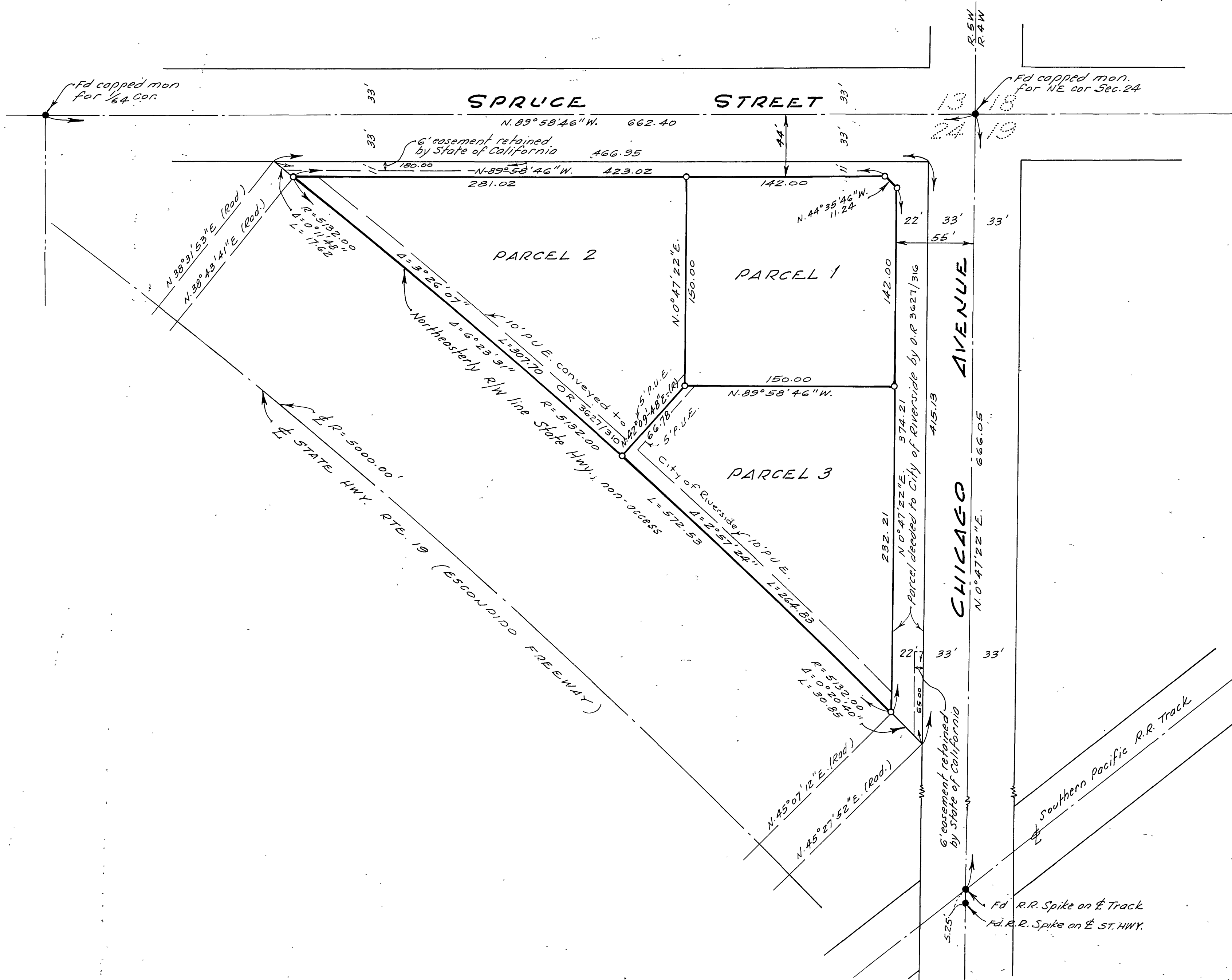
Found monuments as noted at all points  
shown thus ●

Set 3/4" Iron Pipe tagged RE 9876 at all points  
shown thus ○

**COUNTY SURVEYOR'S CERTIFICATE**

This map has been examined for conformance with the requirements of  
the Land Surveyor's Act,  
this 26th day of May, 1964  
A.C. KEITH County Surveyor

By J. K. Kailh Deputy



421  
13  
13