

43 / 8  
RS 4318

IN THE CITY OF RIVERSIDE

# RECORD OF SURVEY

OF A PORTION OF THE N.W. 1/4 OF THE N.E. 1/4 OF SEC. 24,  
T.2S., R.5W., S.B.B. & M.

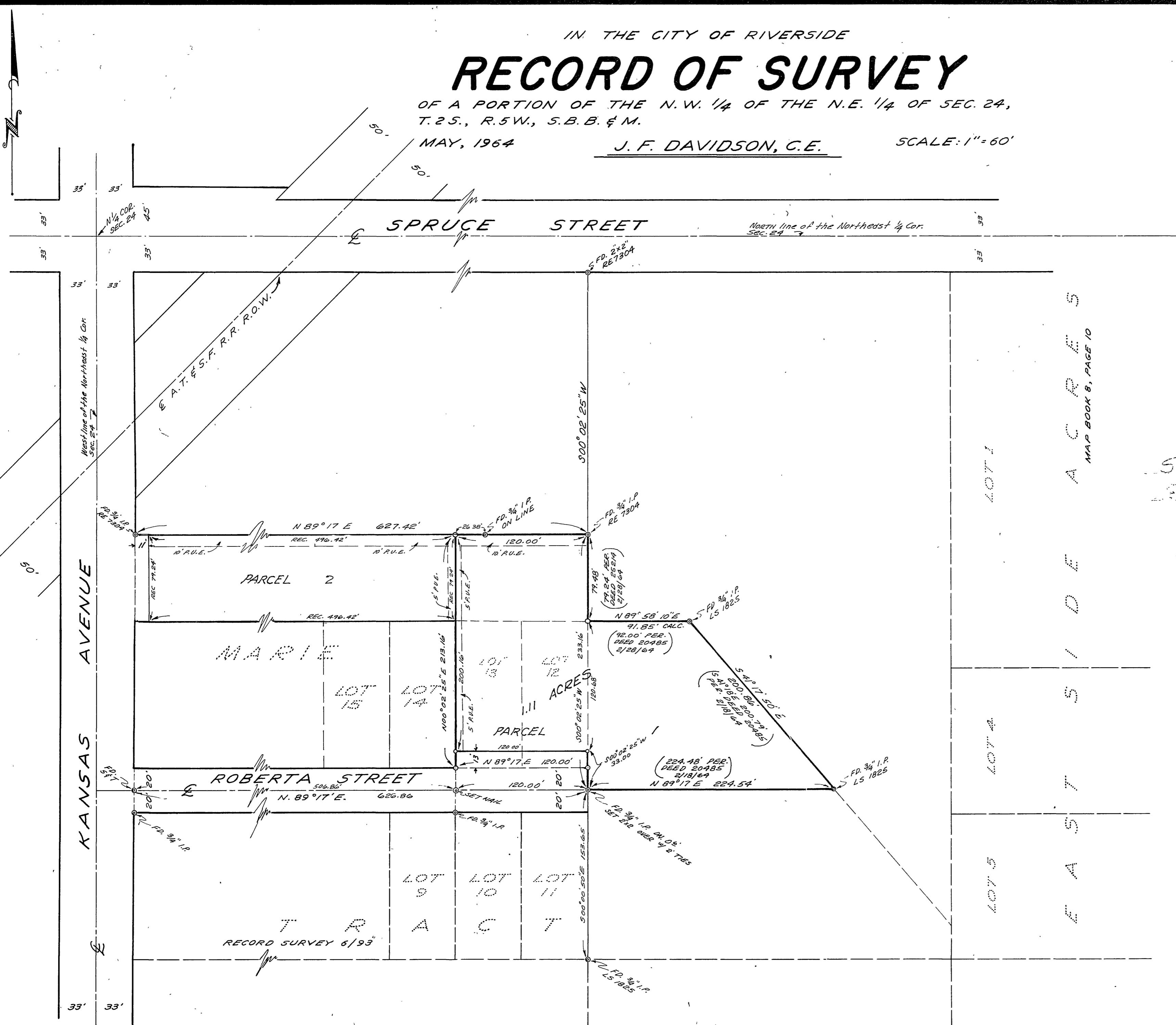
MAY, 1964

J. F. DAVIDSON, C.E.

SCALE: 1" = 60'

### RECORDER'S CERTIFICATE

Filed for record this 13 day of July, 1964 at 1:55 P.M.  
in Book 42 of Record of Surveys at page 8 at the request  
of the County Surveyor: W. D. BALOGH  
County Recorder  
Fee \$ 5.00  
No. 8-1964 By Arnon B. Vaughn Deputy



Street Dead recorded in 2027/153  
Recon and to date in 01/15/153  
B.W.

### SURVEYOR'S CERTIFICATE

This map correctly represents a survey made by me or under  
my direction in conformance with the requirements of the  
Land Surveyors' Act at the request of Joseph C. Vittone  
in May, 1964

J. F. Davidson  
Registered Civil Engineer No. 862

### SURVEYOR'S NOTE

BEARINGS ARE BASED ON THE E OF ROBERTA STREET  
PER R.S. 6/93 RECORDS OF RIVERSIDE COUNTY  
CALIF.

○ INDICATES 3/4" IRON PIPE TAGGED RE862 SET UNLESS  
OTHERWISE NOTED.

### COUNTY SURVEYOR'S CERTIFICATE

This map has been examined for conformance with the  
requirements of the Land Surveyors' Act this 9th day of  
July, 1964.  
A.C. KEITH - County Surveyor

By J. R. Rault Deputy

City Rec. # 1027  
F.B. 886/22

CITY R/S 527

Block R/S 43/8