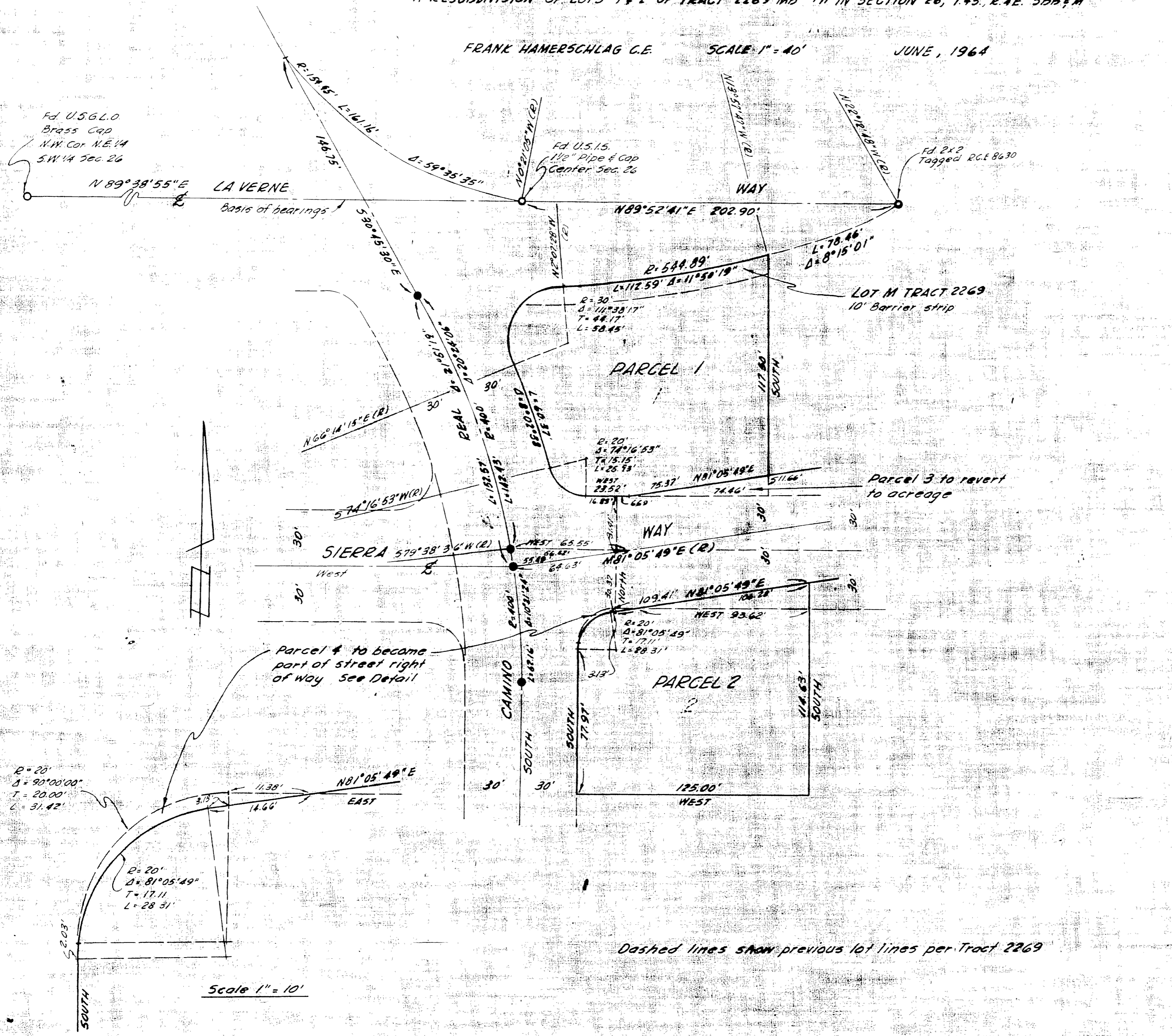


IN THE CITY OF PALM SPRINGS

RECORD OF SURVEY

A RESUBDIVISION OF LOTS 1 & 2 OF TRACT 2269 M.B. 4871 IN SECTION 26, T.4S. R.4E. SBB&M

FRANK HAMERSCHLAG C.E. SCALE 1" = 40' JUNE, 1964



RECORDER'S CERTIFICATE

Filed for record this 16 day of July 19 64
 at 2:30 PM in Book 43 of Record of
 Surveys at page 15 at the request
 of the County Surveyor
 Fee \$ 5.00
 NO. 5119
 W.D. BALOGH County Recorder
 By Leonor B. Balogh Deputy

SURVEYOR'S CERTIFICATE

This map correctly represents a survey made by me or
 under my direction in conformance with the requirements of
 the Land Surveyor's Act at the request of Palm Canyon
 Country Club Inc. in May, 1964

Frank Hamerschlag
 Registered Civil Engineer No. 8630

SURVEYOR'S NOTE

Basis of bearing was taken as N89°38'55"E being a portion of the
 North boundary line of Tract 2269 M.B. 4871 on file
 in Riverside County Records.

Set 2x2 tagged R.C.E. 8630 at all parcel corners
 except as noted.

Found 2x2 tagged R.C.E. 8630 at all lot corners,
 lots 1 & 2, Tract 2269, Map Book 42, page 71, Riverside County Records

● Found Std. City Monument.

COUNTY SURVEYOR'S CERTIFICATE

This map has been examined for conformance with the
 requirements of the Land Surveyor's Act.
 this 16th day of July, 1964

A.G. KEITH County Surveyor
 By *J.W. Raible* Deputy

Dashed lines show previous lot lines per Tract 2269